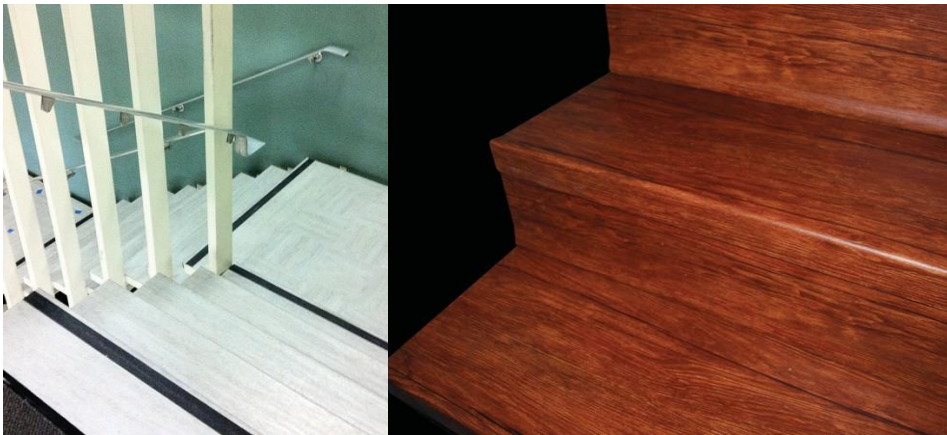


Elevating stair tread design with

5 DISTINCT VISUALS

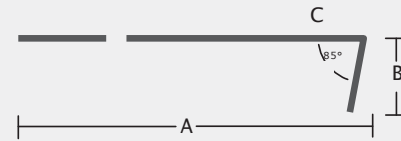


Features

- Never before seen visuals in Wood & Stone
- 30 Mil wear layer for durable wear performance
- Textured leading edge enhances Slip Resistance
- Available in 4', 5' and 6' Lengths with VI Tape Option
- Landing Tile and Plank Available

SPECIFICATIONS

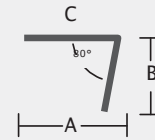
Stair tread



A= 12.125"
B= 1.875"
C= .125"
Carton Qty: 6



Nosing



A= 3.62"
B= 1.875"
C= .125"
Carton Qty: 12



Riser



A= 7"
B= .375"
C= .125"
Carton Qty: 12

