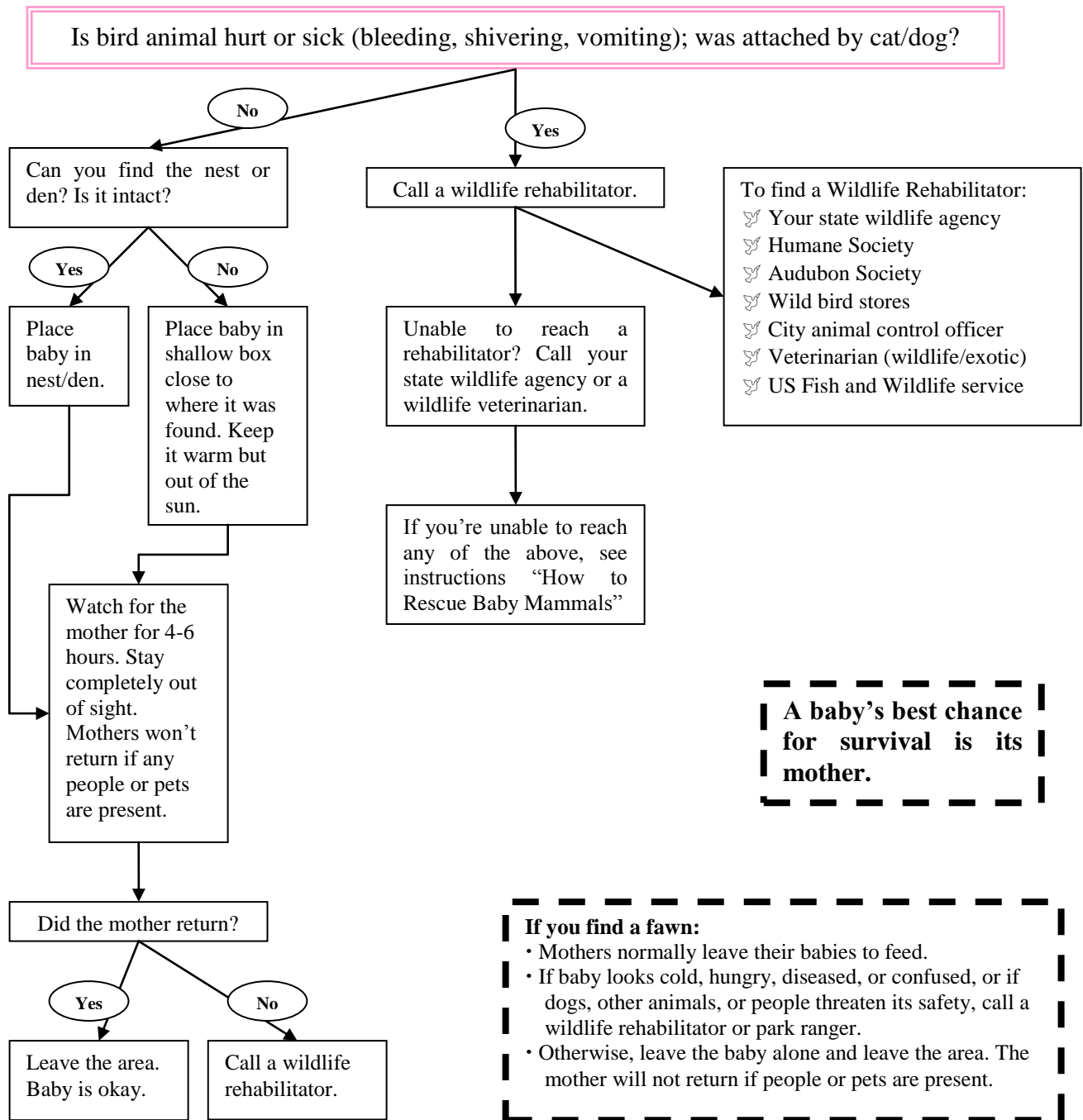


I FOUND A BABY MAMMAL ~ NOW WHAT?



If you find baby bunnies:

- If their nest has been damaged, it can be repaired. Look for a shallow depression lined with grass/fur. Place babies in nest with light layers of grass to hide them. Leave the area, or the mother won't return. (Mothers return only at dawn and dusk.)
- If you find healthy bunnies that are 4-5 inches long, able to hop, with eyes open and ears up, they do not need help. They are able to survive on their own. Leave them alone. Questions? Call a wildlife rehabilitator.

