

Extras Menu

Make your pet's vacation as special as yours will be!

- Frosty Paws ice cream treat for dogs (original/PB) \$3.50 each
- Long walk on the beach for dogs (weather permitting) \$22.00 each
- Extra cuddling sessions Free
- Peanut butter Kong \$3.50 each
- Brush time \$3.00/10 min
- Extensive exploration of the woods (on a leash) \$9.00/20 min
- Bottled water (dogs) \$1.50/day
- Extra potty walk \$4.00/walk
- Toy time (cats) \$3.50/15 min
- Fenced structured play \$10/30min

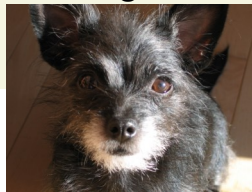


Included with every lodging stay

- all guests are fed premium foods (Iams or Science Diet) or you may bring their own food
- room service twice daily : bedding and water refreshed
- soothing music clinically demonstrated to calm dogs played in the kennel
- fascinating seascape keeps cats entertained
- four to six potty walks a day
- bedtime snacks every night
- doctor available 24/7, on site nearly every day
- cats enjoy bottled water and catnip treats

Parkdale Animal Hospital

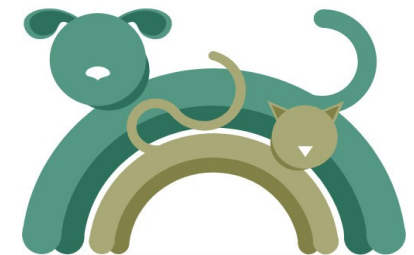
420 Parkdale Avenue
Manistee, Michigan 49660
Phone 231-723-8998
Fax 231-723-5477
www.ParkdaleVet.com
(download intake forms online)
24-Hour Emergency Care
Laser Surgery
Evening Hours



Pet Lodging

Parkdale Animal Hospital

We'll make sure your pet has fun while you're away!



PARKDALE
Animal Hospital
231-723-8998
www.ParkdaleVet.com

Pet Lodging at Parkdale Animal Hospital

Lodging at Parkdale is a great way to make sure your pet has fun and stays safe while you're away.

Fun!!

Cats lounge the day away in their private cabana fascinated by the tropical seascape before them. A daily catnip treat is a favorite with all our feline friends. Cats enjoy bottled water (we know how discriminating their palates can be).

Dogs have roomy private runs or cozy cages decked out with comfy bedding. Walks through our woods several times a day give even the nosiest nose something to get excited about.

Safe!!

Our lodging staff is highly trained to handle lodgers of all personalities—from the Timid Tabby that needs a gentle approach to the Dynamic Dobie that needs a few extra laps through the woods. Our facility is fully alarmed for fire, unauthorized entry and extreme temperature.

Check out the **extras section** to make your pet's stay extra special.

Price List (per day)*

Dog Lodging in a Large Run \$18.00

Dog Lodging in a Medium or Small Cage \$15.00

Cat Lodging in Kitty City \$10.00

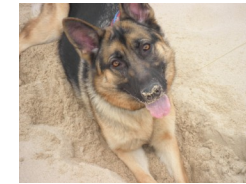
2 Dogs in the Same Run \$33.00

2 Dogs in the Same Cage \$27.00

2 Cats in the Same Kitty Condo \$17.00

Day Lodger (pick up the same day your pet arrives) \$12.50 dog \$8.00 cat

Medical Lodging (giving your pet's own medication) \$5.00 additional



Dog Healthcare Requirements:

- Rabies Vaccine
- Bordatella Vaccine
- Distemper/Parvo/Leptospirosis Vaccine (DHLPP)
- Heartworm Test
- Fecal Analysis
- Over 4 months old and fully vaccinated

Cat Healthcare Requirements:

- Rabies Vaccine
- Feline Distemper Combination Vaccine (FVRCP)
- Fecal Analysis
- FeLV/FIV Test

Proof of vaccination/preventative care required at or before drop off. Healthcare requirements can be done during the lodging stay if necessary. Charges for these services, including a doctor's examination, will apply. Deworming is mandatory if your pet is not on monthly internal parasite control.

Drop-off and Pick-up Times*:

Monday, Thursday, Friday: 8am—5pm

Tuesday, Wednesday: 8am—8pm

By Advance Arrangement Only:

Saturday: 9am—11am

Sunday: 5pm—7pm

All other times by advanced arrangement and for an additional fee.

This schedule may vary on holidays.

**Prices and times subject to change.*