

A Factual Report from Mercury Marine

TEST CONDITIONS

Test Date	9/19/2019
Test Conductor	P. Trapp
Test Location	Tellico Lake, TN
Air Temperature (degrees F)	85
Elevation (ft)	814.0
Sea State (calm / smooth / slight / moderate)	Slight
Wind Velocity range (mph)	7.0
Fresh/Salt Water	Fresh water
Boat Weight as Tested (lbs)	3990.0
Fuel Level at Testing (gal)	20.0

English
Units

ENGINE SPECIFICATIONS

Number of Engines	1
Engine	6.2 320 TOW EC 4R RW MS 46IV
Horsepower	320 (SN 2A676609)
Cylinders	8
Full Throttle RPM	5000-5400
Drive or gear model and ratio	46IV 1.46:1
Hole	
Height	
Setback	
Length (inches)	

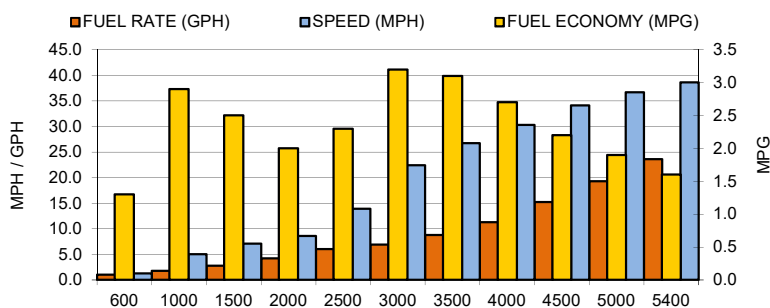
PERFORMANCE SUMMARY

Top Speed (mph @ rpm)	39.0	5,399
Acceleration 0 - 20 mph (seconds)	3.47	
Acceleration 0 - 30 mph (seconds)	5.34	
Best Fuel Econ Off Idle (mpg @ rpm)	3.2	3000

PROPELLER SPECIFICATIONS

Mercury Name / Part Number	OJ WakePro V-3 / 985
Material	Ni-Bral (Nickel, Bronze, Aluminum)
Diameter/Pitch	
Number of Blades	4
Hub Type	n/a

PERFORMANCE CURVE



PERFORMANCE DATA

RPM	SPEED (MPH)	FUEL RATE (GPH)	FUEL ECONOMY (MPG)	RANGE (MI)
600	1.3	1.0	1.3	93.6
1000	5.0	1.8	2.9	208.8
1500	7.1	2.8	2.5	180.0
2000	8.6	4.2	2.0	144.0
2500	13.9	6.0	2.3	165.6
3000	22.4	6.9	3.2	230.4
3500	26.7	8.8	3.1	223.2
4000	30.3	11.3	2.7	194.4
4500	34.1	15.2	2.2	158.4
5000	36.7	19.3	1.9	136.8
5400	38.6	23.6	1.6	115.2

BOAT SPECIFICATIONS

Region/s sold	International
Manufacturer	Heyday
Website	https://heydaywakeboats.com/models/wt-2dc/
Boat Model	WT-2DC (Dual Console)
Boat Type	TowSport/Watersports
HIN Tested (if available)	US-WTXX1101H920
Material	Fiberglass
Length (ft)	22' 6"
Beam (ft)	8' 0"
Max hp Capacity	370
Fuel Tank Capacity (g)	72.0
Steering Type	Cable
Dry Boat Weight (lb)	3550.0

