

Building will host records of Barack Obama era for his presidency of United States. Every level is a storage, gallery and office space for a specific year. Stacked on top of each other forming the complete archive of the Obama era.

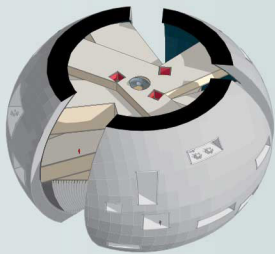
The Bridge of Hope is shaped as the peace sign connecting three sides of the river. This is the first year of Obama in the office. The levels above this bridge is the distortion of the hope in random directions. The form of these floors could be seen as the artefacts of a era; struggling to do something great when it is impossible to do so. The distortion of great hopes.

Eight years of presidency is archived in the sphere, each side on every level opening towards a different view in Chicago. Each level have a different ceiling height in order to accommodate different programmes. Some levels have a mezzanine floor when there is a relatively higher number of documents to store.

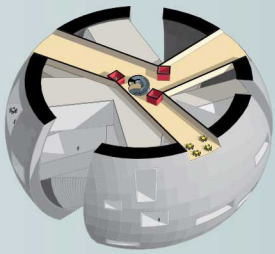
Circulation is provided at the heart of the building plan, from the ground until the top floor with a spiral staircase. Floor plates are supported by cores, hosting the elevators for the building as well. The time travel is continuous as one walks up the stairs from the ground level, up to the roof.

The amphi theatre is the base of the building that is introduced to the presidential libraries by us. Democracy is only meaningful when anybody can say anything without getting punished for it. Therefore without any glass, without any walls, Obama Presidential Library provides a free amphi theatre for Chicago to communicate, discuss anything. The Bridge of Hope cuts through the theatre, looking above discussions being held, allowing them to be overheard. The unexpected contribution of public is possible while crossing the bridge. Enabling the disturbing incidents that the speaker and audience have to bear.

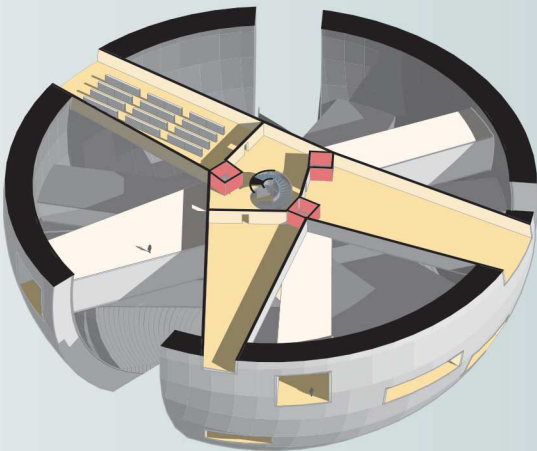
Obama Presidential Library stands on the edge of Chicago as an artefact of a very specific era in a timeless and monumental way. It is an archive, a true public and active building unlike many other presidential libraries that is no different than a mausoleum for its president.



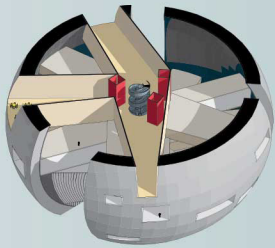
ARCHIVES FOR THE YEAR 2017



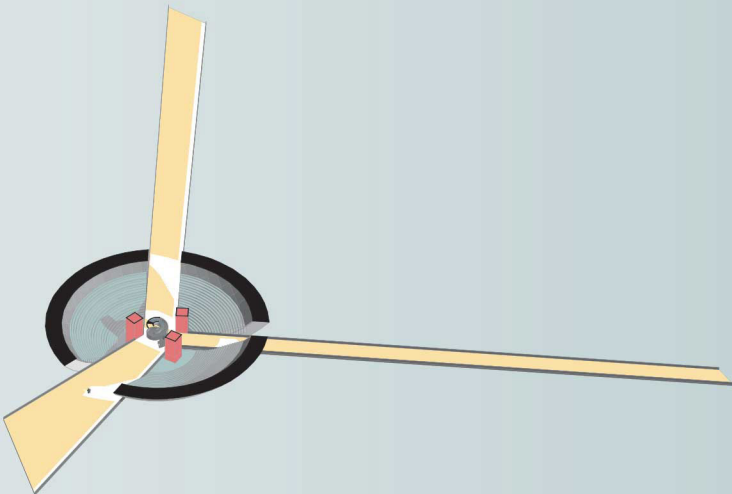
ARCHIVES FOR THE YEAR 2016



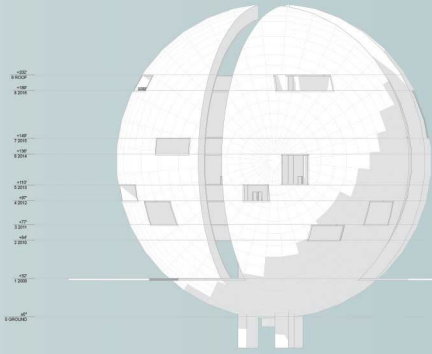
ARCHIVES FOR THE YEAR 2014



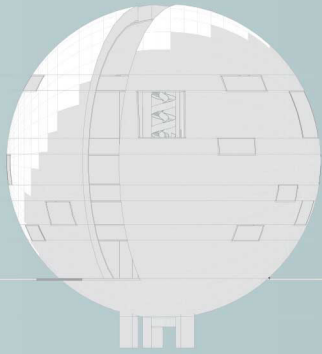
ARCHIVES FOR THE YEAR 2015



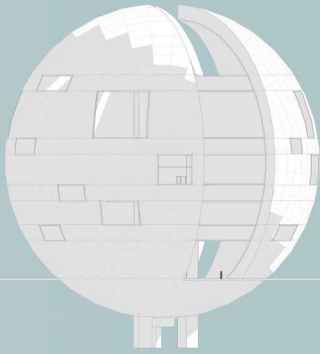
ARCHIVE FOR THE YEAR 2009, WHEN OBAMA WAS ELECTED FOR PRESIDENCY



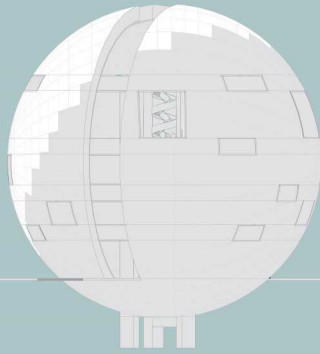
EAST



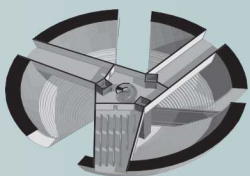
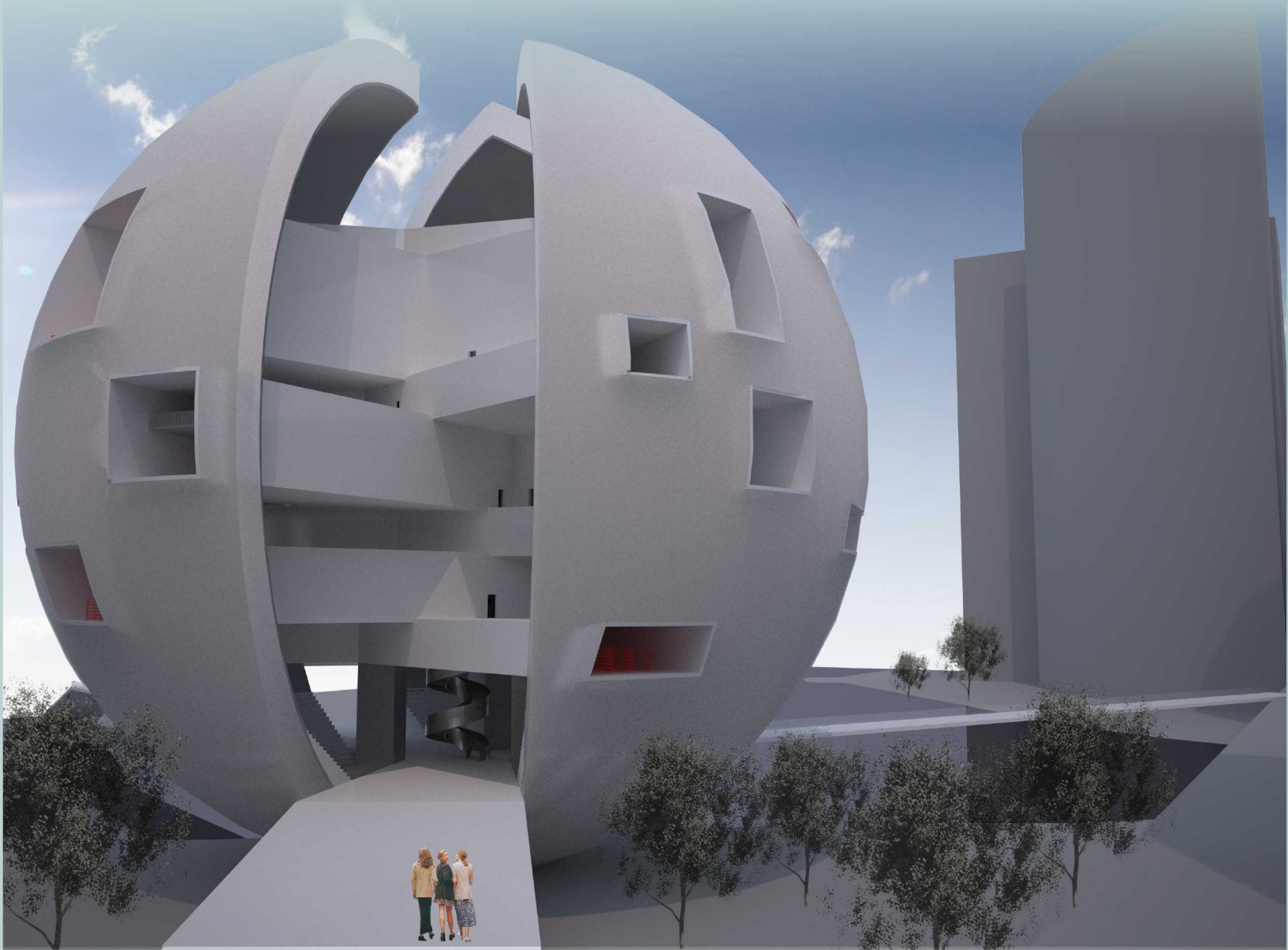
NORTH



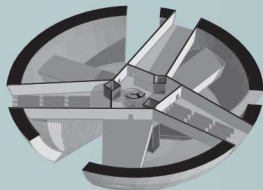
WEST



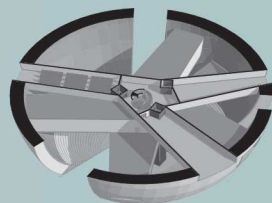
SOUTH



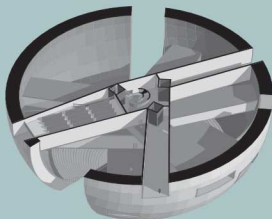
ARCHIVES FOR THE YEAR 2010



ARCHIVES FOR THE YEAR 2011

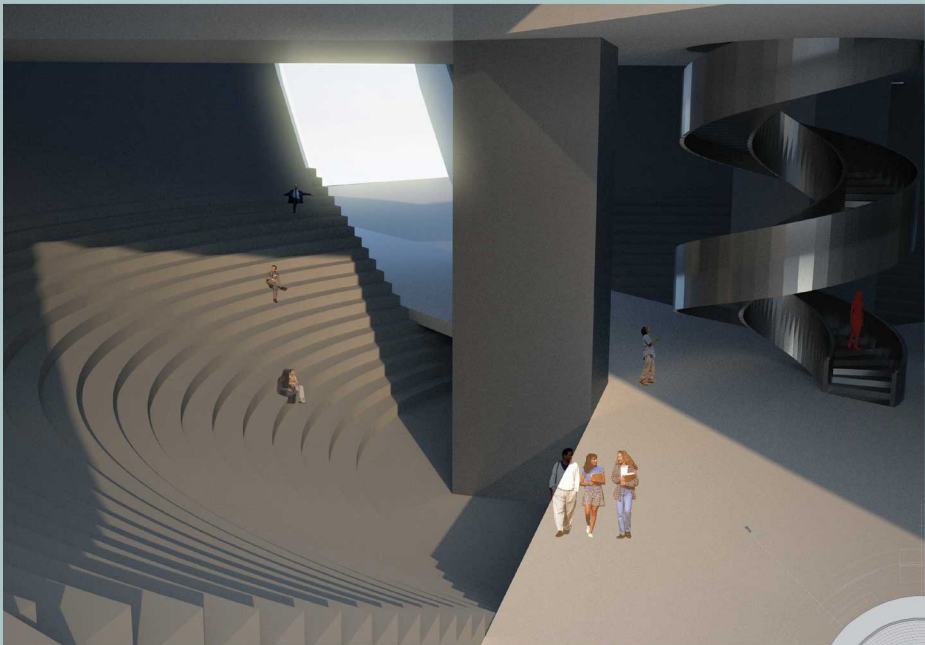


ARCHIVES FOR THE YEAR 2012

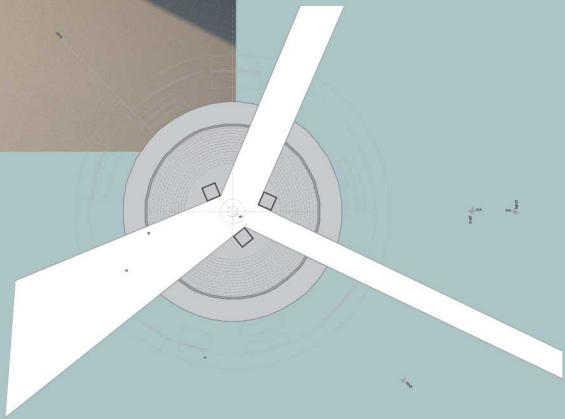


ARCHIVES FOR THE YEAR 2013

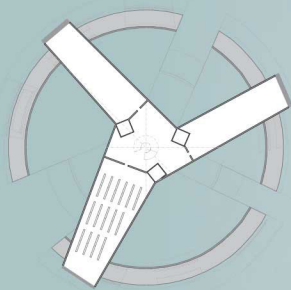




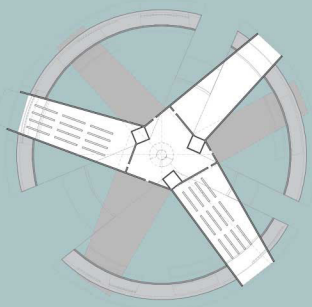
THE THEATRE FOR POLITICAL DEBATES, THAT CAN BE HEARD AND EVEN OPEN FOR THE CONTRIBUTION OF THE USER OF THE HOPE BRIDGE



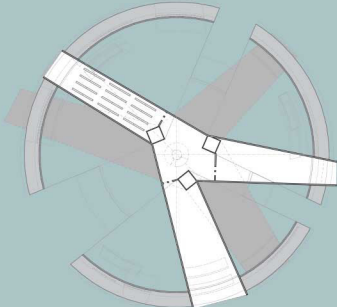
THE HOPE BRIDGE CONNECTING THREE RIVERSIDES OF CHICAGO



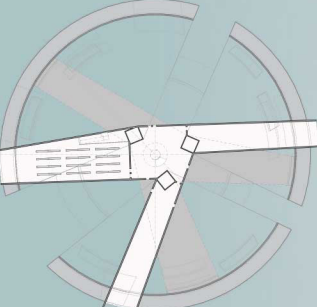
01.03 PLAN +2.PDF



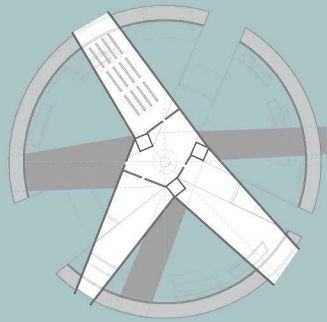
PLAN +3 (HOSTING)



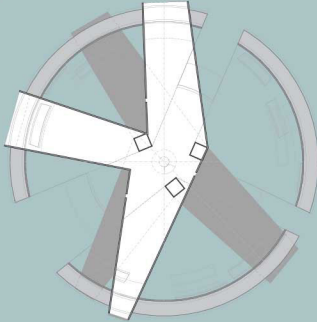
01.05 PLAN +4.PDF



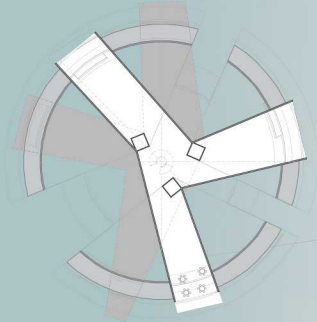
01.06 PLAN +5.PDF



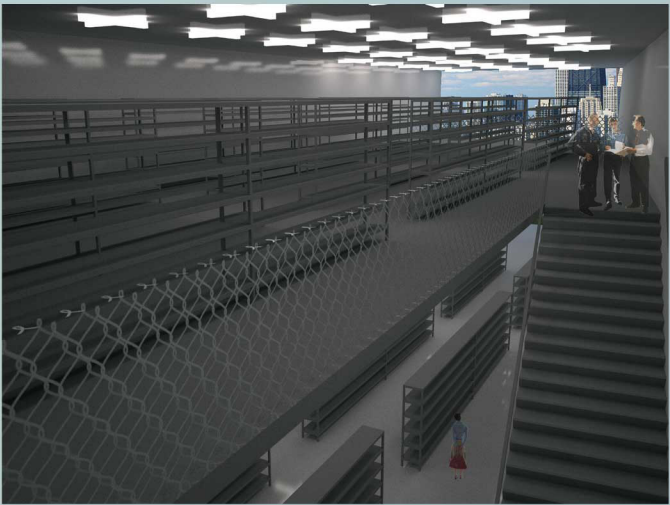
01.07 PLAN +6.PDF



01.08 PLAN +7.PDF



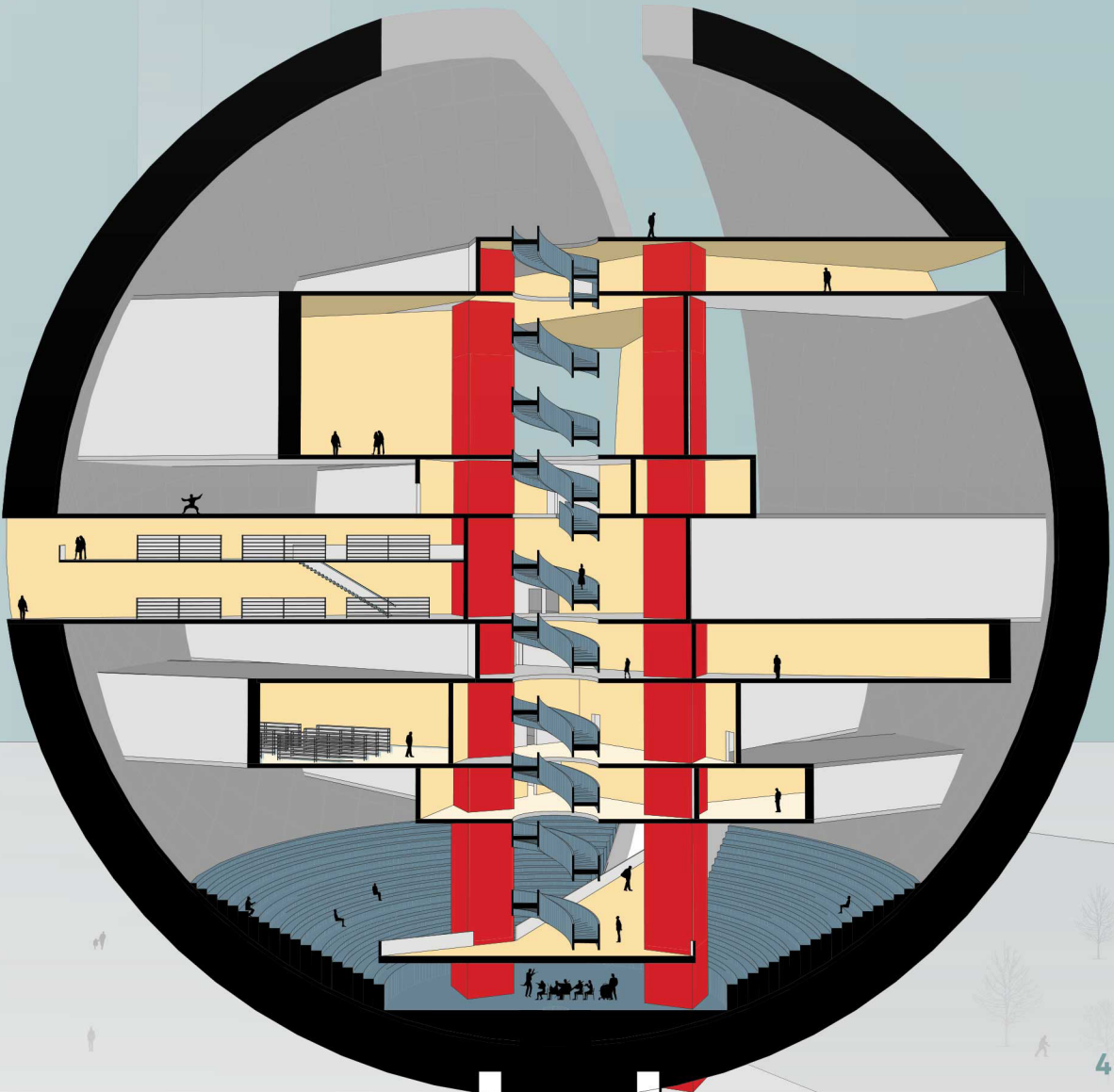
01.09 PLAN +8.PDF



LIBRARY



THE CAFE







THE BARACK OBAMA PRESIDENTIAL LIBRARY

