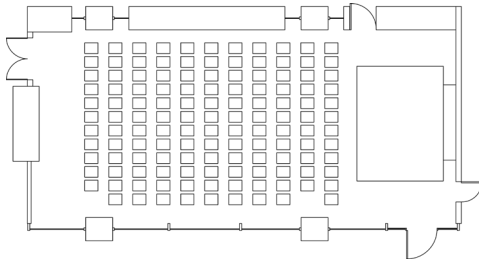


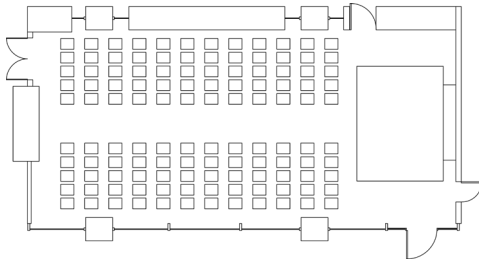
LECTURE HALL DIAGRAM

1



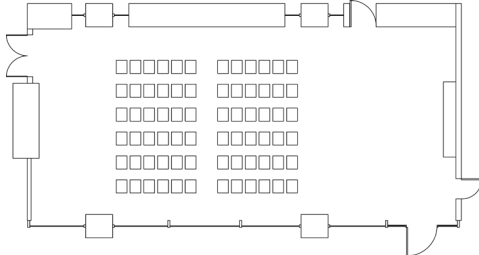
Theatre Style 130 chairs

2



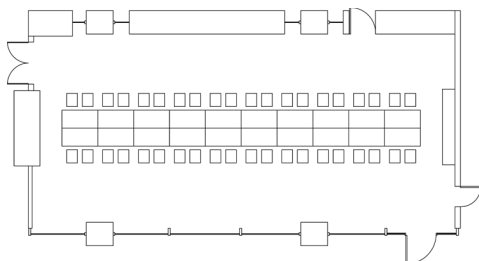
Lecture Style 120 chairs

3



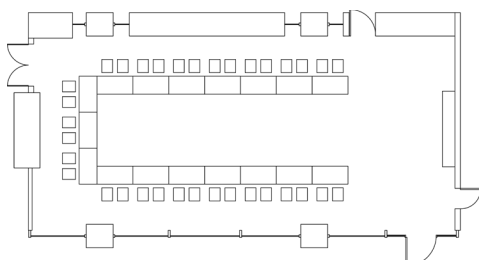
Lecture Style Monitor 72 chairs

4



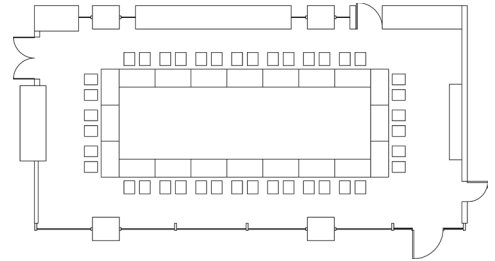
Board Meeting Style 20 tables, 40 chairs

5



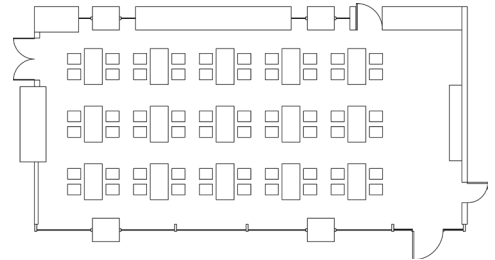
U-Shape Style 17 tables, 34 chairs

6



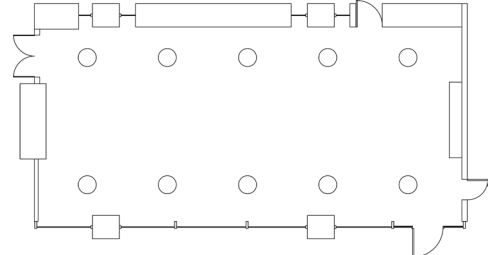
Hollow Center Style 20 tables, 40 chairs

7



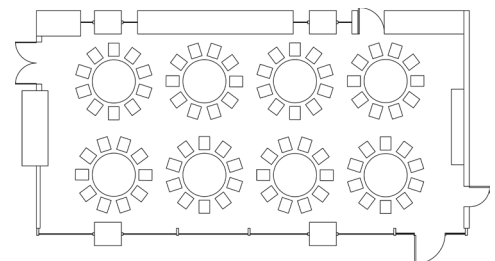
Classroom Style 15 tables, 60 chairs

8



Reception Style assorted highboys

9



Seated Rounds Style 8 rounds, 80 chairs