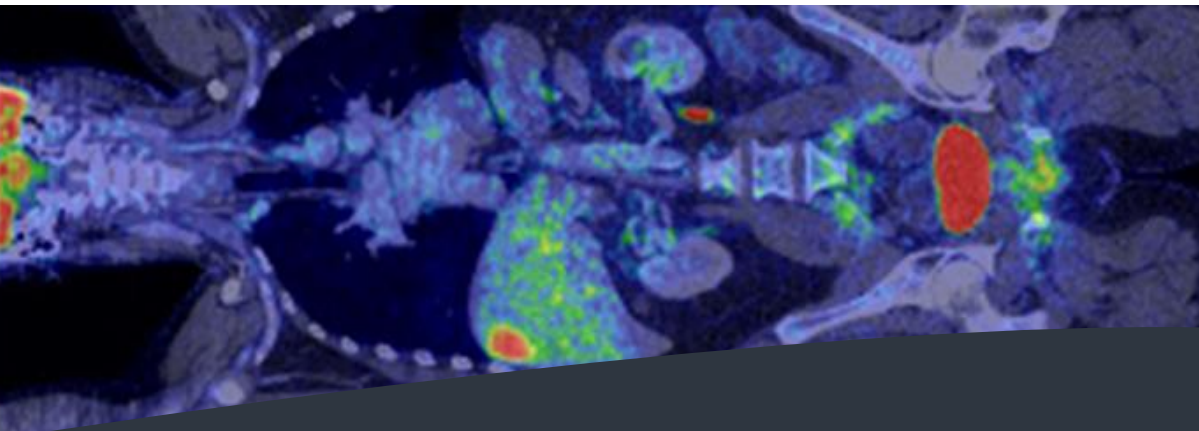


11<sup>th</sup> Annual CPD/CME Conference

Waters Edge, **Port Macquarie**

Saturday 8<sup>th</sup> & Sunday 9<sup>th</sup> November, 2014

# Integrative Imaging Symposium



**THEME: RENEW AND REFRESH**

GE Healthcare



*Waters Edge*  
PORT MACQUARIE



**11**  
years

CT

MRI

PET

SPECT

RAINS Rural Alliance in Nuclear Scintigraphy

Charles Sturt University Faculty of Science

Macquarie University Australian School of Advanced Medicine



*E Pluribus Unum*  
out of many, one

**rains**  
RURAL ALLIANCE IN NUCLEAR SCINTIGRAPHY

**MACQUARIE  
UNIVERSITY**



THE AUSTRALIAN SCHOOL  
OF ADVANCED MEDICINE



**Charles Sturt  
University**

[www.csu.edu.au](http://www.csu.edu.au)

**Nuclear Medicine @  
Wagga Wagga &  
Port Macquarie**

**Making Technical Excellence the Standard**

# **Port Macquarie in 2014!!!!**

**Gold Sponsor**  
**GE Healthcare**

**Silver Sponsor**  
**ANSTO Health**  
**Carestream Aust**

**Bronze Sponsors**  
**Imaxeon**

**Speaker Sponsors**  
**Healthcare Imaging**

**Telemed**

**PRP Imaging**

**Queensland Xray**

**CAMRT / JMIRS**

**Cardiac Health Institute**

**GE Healthcare**



# IMPORTANT ANNOUNCEMENT

**RAINS has formed a partnership with the Canadian Association of Medical Radiation Technology and, in particular, the Journal of Medical Imaging and Radiation Sciences (JMIRS). This partnership means RAINS members will get online access to this high quality international peer reviewed journal. JMIRS is the official publication of RAINS!!!**



## JOURNAL OF MEDICAL IMAGING AND RADIATION SCIENCES

### WHAT THAT MEANS

**This addition is very good for members and highlights the international importance of RAINS. For members, it means greater access to CPD opportunities. The RAINS Newsletter (Seasonal RAINS) will be released following each edition of the JMIRS (thrice yearly). The RAINS Newsletter will have CPD activities related to the manuscripts in that edition of the JMIRS. JMIRS is also an excellent outlet for RAINS members to publish cases and CPD articles for additional CPD credit.**

**This will also mean we pay an administrative charge and need to manage our membership database better. Because RAINS membership has not had annual renewals, many members details are incorrect. So we will have annual membership renewal starting in November 2014 with a small fee (\$15 full / \$10 student) and that fee is wholly included in your registration for the RAINS conference for those that register. Thus, registering for the RAINS conference automatically renews your membership.**

# Saturday (8th November) Program

	<b>0830-0900</b>	Registration Tea, coffee and juice
<b>Session 1</b>	<b>0900 - 1030</b>	Welcome (5 min)  Myocardial perfusion SPECT: what's changed (45 min) A/Prof Barry Elison  PET/CT in RT planning (40 min) Jessica Church  Chair: Pete Tually
<b>Morning tea</b>	<b>1030 - 1100</b>	
<b>Session 2</b>	<b>1100 - 1230</b>	Parathyroid imaging revisited Dr Emlyn Jones  MRI sequences, contrast and advances Johnathan Hewis  Chairs: Maddison Barden and Stephanie Kaylock
<b>Lunch</b>	<b>1230 - 1330</b>	
<b>Session 3</b>	<b>1330 - 1500</b>	ECG interpretation (45 min) Dr Colin Tso  Clinical utility of SPECT/CT Dr Shane Morony  Chairs: Zoey-Jo Murphy and Amanda Mayled
<b>Afternoon tea</b>	<b>1530 - 1600</b>	
<b>Session 4</b>	<b>1600 - 1700</b>	Peptide imaging Prof Geoff Currie
<b>Cruise</b>	<b>1730-1830</b>	River cruise with drinks/nibbles. Departure details onsite.
<b>Evening</b>	<b>1830</b>	Conference Dinner and Drinks – Waters Edge Restaurant

## Saturday (8th November) Program GEHealthCare Tutorial Room

<b>Morning tea</b>	<b>1000 - 1030</b>	
<b>Session 2</b>	<b>1100 - 1230</b>	GE Xeleris 3.1 Processing workstation – User Group Workshop
<b>Lunch</b>	<b>1230 - 1330</b>	
<b>Session 3</b>	<b>1330 - 1500</b>	GE AW workstation – User Group Workshop
<b>Afternoon tea</b>	<b>1530 - 1600</b>	

## Sunday (9th November) Program

<b>Session 1</b>	<b>0900 - 1030</b>	CT Physics Lacey Greene  Radioactive waste management: policy and practice Rebecca Stohr (Australian Department of Industry)  Chairs: Laura Skelly and Melanie Carter
<b>Morning tea</b>	<b>1030 - 1100</b>	
<b>Session 2</b>	<b>1100 - 1230</b>	Clinical supervision: Formative and Summative assessment Pete Tually  RAINS and Radpharm Awards Radpharm award  Chair: Matt Ayers
<b>Lunch</b>	<b>1230 - 1330</b>	RAINS AGM
		<b>Close / Depart</b>

