

IRELAND & GREAT BRITAIN







LONDON, ENGLAND

The Athenæum



“Sophisticated enclave of apartments in a row of Edwardian townhouses between Piccadilly/St. James’s and Hyde Park. Smartly appointed units feature fully equipped kitchenettes, living rooms and separate bedrooms with small marble baths. All facilities of neighboring and recently renovated Athenæum Hotel available to guests.”

—Andrew Harper

AH Andrew Harper benefits include: preferred rates; an upgrade, when available at check-in; daily full breakfast served at the restaurant or in room; early check-in/late checkout, when available; for stays of three nights or longer, a one-way Heathrow Airport transfer; and for stays of five nights or longer, round-trip Heathrow Airport transfers.

HIGHLIGHTS

- Mayfair location
- Close to the Royal Parks
- Well-appointed apartments
- Stunning park-view suites
- London’s Best Afternoon Tea 2012
- Bar with over 270 whiskies
- Two-AA Rosette restaurant
- Luxury spa and gym
- Kids’ concierge
- Family-owned independent hotel

ACCOMMODATIONS

134 rooms, 12 suites and 18 apartments

ANDREW HARPER ACCOLADES

Recommended since 1996

GETTING THERE

40 minutes from Heathrow Airport (LHR) by taxi

WEBSITE

www.athenaeumhotel.com

STANDARD/RACK RATES

Rates from \$636
Rates include Wi-Fi and complimentary soft drinks and snacks from minibar. Children under 12 eat free.



These published rates, in US dollars, serve only as a guideline for travel planning and may vary based on season, currency exchange rates and other factors. The latest rates, including preferred Andrew Harper rates, are available to our subscribers booking online, directly with the hotels or through the Andrew Harper Travel Office. When booking direct, always provide your Andrew Harper subscriber number. Subscriber benefits are available only in conjunction with Andrew Harper rates.

TO ENSURE RECEIPT OF YOUR SUBSCRIBER BENEFITS, CONTACT THE ANDREW HARPER TRAVEL OFFICE AT (800) 375-4685 OR EMAIL RESERVATIONS@ANDREWHARPER.COM





HAMPSHIRE, ENGLAND

Chewton Glen Hotel & Spa



“Luxurious and cosmopolitan 18th-century manor-resort amid 130 acres of lawns and gardens, 90 minutes southwest of London. Individually decorated accommodations include stylishly refurbished Gold Croquet Lawn rooms with fine antiques, rich fabrics, generous sitting areas, ample storage, private balconies or patios, marble baths with large tubs and separate walk-in showers. Parlors and sun lounges lead to formal gourmet conservatory restaurant. Grand stone terraces overlook grounds containing croquet lawn, nine-hole golf course, tennis courts, pool. 56-foot indoor pool, health/fitness spa offering more than 60 body/facial treatments.” —*Andrew Harper*

AH Andrew Harper benefits include: the best available non-restricted rates; an upgrade, when available at check-in; daily continental breakfast served at Vetiver restaurant; a pool bar buffet lunch for two per room; a New Forest book per room; and when booking a Treehouse Suite, an afternoon tea hamper upon arrival.

HIGHLIGHTS

- Set on 130 acres
- 10-minute walk to the sea
- In the heart of the New Forest
- 12 brand-new Treehouses
- Spa/pool/fitness facilities
- Family-friendly
- Three-AA-Rosette restaurant
- Kids' club
- Complimentary Wi-Fi
- Activities on-site

ACCOMMODATIONS

70 rooms, including 35 suites

ANDREW HARPER ACCOLADES

Recommended since 1979
2012 Readers' Choice Award-Winner

GETTING THERE

30 minutes from Southampton Airport (SOU) by car

WEBSITE

www.chewtonglen.com

STANDARD/RACK RATES

Rates from \$487

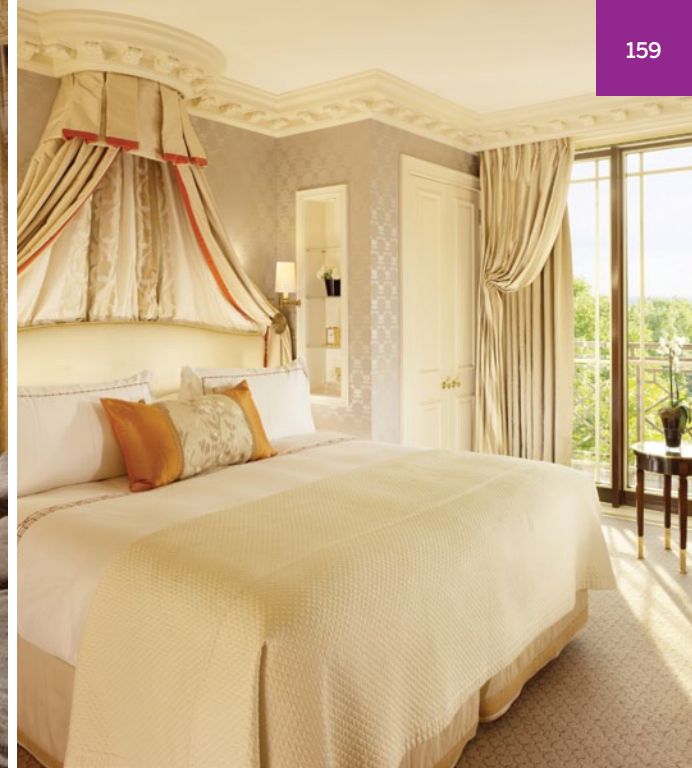
Rates include taxes, service, welcome fruit, golf, croquet, tennis, mountain bikes, spa access, Wi-Fi, daily newspaper and valet parking.

When booking a Treehouse Suite, rates also include a daily breakfast hamper.

**CHEWTON
GLEN**
HAMPSHIRE

These published rates, in US dollars, serve only as a guideline for travel planning and may vary based on season, currency exchange rates and other factors. The latest rates, including preferred Andrew Harper rates, are available to our subscribers booking online, directly with the hotels or through the Andrew Harper Travel Office. When booking direct, always provide your Andrew Harper subscriber number. Subscriber benefits are available only in conjunction with Andrew Harper rates.

TO ENSURE RECEIPT OF YOUR SUBSCRIBER BENEFITS, CONTACT THE ANDREW HARPER TRAVEL OFFICE AT (800) 375-4685 OR EMAIL RESERVATIONS@ANDREWHARPER.COM



LONDON, ENGLAND

The Dorchester



“Refurbished hotel on Park Lane overlooking Hyde Park. Spacious rooms and suites overlooking the park or Mayfair are individually bespoke with antique furniture. Well-equipped art deco-style marble baths have deep tubs, and most have twin vanities and separate walk-in showers. Sophisticated and recently upgraded spa and health/fitness center. Dining venues include The Promenade for award-winning afternoon teas, The Grill for traditional British cooking, three-Michelin-star Alain Ducasse for contemporary French cuisine and China Tang, with authentic Cantonese food.” —*Andrew Harper*

AH Andrew Harper benefits include: the best available non-restricted rates; an upgrade, when available at check-in; daily full breakfast served at the restaurant or in room; a welcome amenity; and a one-way Heathrow Airport transfer for two per room.

Book this property online at AndrewHarper.com.

HIGHLIGHTS

- Classic world-renowned icon
- Elegant luxury
- Unrivaled service standards
- Views over Hyde Park
- Mayfair location

- Gourmet dining options
- Suites newly renovated in 2012
- Award-winning spa
- Family-friendly
- 24-hour room service

ACCOMMODATIONS

250 rooms, including 51 suites

ANDREW HARPER ACCOLADES

Recommended since 1992

GETTING THERE

45 minutes from Heathrow Airport (LHR) by car

WEBSITE

www.thedorchester.com

STANDARD/RACK RATES

Rates from \$425

Rates include Wi-Fi and spa access.

The Dorchester
Dorchester Collection

These published rates, in US dollars, serve only as a guideline for travel planning and may vary based on season, currency exchange rates and other factors. The latest rates, including preferred Andrew Harper rates, are available to our subscribers booking online, directly with the hotels or through the Andrew Harper Travel Office. When booking direct, always provide your Andrew Harper subscriber number. Subscriber benefits are available only in conjunction with Andrew Harper rates.

TO ENSURE RECEIPT OF YOUR SUBSCRIBER BENEFITS, CONTACT THE ANDREW HARPER TRAVEL OFFICE AT (800) 375-4685 OR EMAIL RESERVATIONS@ANDREWHARPER.COM

LONDON, ENGLAND

The Goring

“Delightfully old-fashioned hotel a stone’s throw from the Queen’s back garden at Buckingham Palace. Remodeled to exude a rich but classic English country house atmosphere in which silk wall coverings, sumptuous draperies, mahogany headboards and ginger-jar lamps blend with wireless internet, satellite TV and video on demand. Some accommodations include separate sitting rooms and private balconies overlooking the hotel’s secluded garden. Amenities include a lovely lounge and appealingly decorated traditional dining room.” —*Andrew Harper*

AH **Andrew Harper benefits include:** the best available non-restricted rates; an upgrade, when available at check-in; daily continental breakfast served at the restaurant or in room; a welcome amenity; a 100 USD food and beverage credit per room for use at The Dining Room; and when booking a Most Splendid Silk Room, The Most Splendid Balcony Room or a Belgravia Suite, a one-way airport transfer.

Book this property online at AndrewHarper.com.

HIGHLIGHTS

- Family-friendly hotel
- Central London location
- Rooms with garden view
- Luxury interiors
- Quintessentially English

ACCOMMODATIONS

69 rooms, including seven suites

ANDREW HARPER ACCOLADES

Recommended since 2008

GETTING THERE

45–60 minutes from Heathrow Airport (LHR) by car

STANDARD/RACK RATES

Rates from \$870
Rates include access to local healthclub and pool, shoeshine and daily newspaper.

LONDON, ENGLAND

The Halkin
by COMO

“Chic and understated boutique hotel with an award-winning Thai restaurant in an ideal Belgravia location near galleries, shops and restaurants, and within walking distance of the famous Knightsbridge department stores. Exceptionally friendly and obliging staff.” —*Andrew Harper*

AH **Andrew Harper benefits include:** the best available, non-restricted rates; an upgrade, when available at time of booking; daily continental breakfast (or full English breakfast when booking a Suite) served at the restaurant or in-room; the pressing of one garment per person upon arrival; and a flight of wine per person at the bar.

Book this property online at AndrewHarper.com.

HIGHLIGHTS

- Complimentary Wi-Fi
- Balcony suites
- 24-hour room service
- 24-hour concierge service
- Afternoon tea

ACCOMMODATIONS

41 rooms, including 17 suites

ANDREW HARPER ACCOLADES

Recommended since 2010

GETTING THERE

30 minutes from Heathrow Airport (LHR) by taxi

STANDARD/RACK RATES

Rates from \$500
Rates include a welcome drink, Wi-Fi and fitness center access.





LONDON, ENGLAND

The Lanesborough



“Regency-style hotel on busy Hyde Park Corner, close to Buckingham Palace. Lodgings are furnished in period pieces and 19th-century artwork with every conceivable in-room amenity, plus personal butler service. Amenities include the atmospheric Library Bar; Apsleys, a modern Italian restaurant developed by Heinz Beck; the Garden Room with an extensive offering of Cuban and pre-Castro cigars; and a spa/fitness studio.” —*Andrew Harper*

AH Andrew Harper benefits include: the best available non-restricted rates; an upgrade, when available at check-in; daily continental breakfast served at the restaurant or in room; a welcome bottle of house wine with petit fours per room; and for stays of three nights or longer in a Deluxe Double or higher room category, a one-way airport transfer to Heathrow or Gatwick.

Book this property online at AndrewHarper.com.

HIGHLIGHTS

- Historic regency-style building
- Three staff for every guest
- Butler for each room
- Generous inclusions
- Complimentary Wi-Fi
- Knightsbridge location
- Hyde Park views
- One-Michelin-star dining
- Laptop in every room
- Award-winning cigar bar

ACCOMMODATIONS

93 rooms, including 42 suites

ANDREW HARPER ACCOLADES

Recommended since 1996

GETTING THERE

40 minutes from Heathrow Airport (LHR) by car or taxi

WEBSITE

www.lanesborough.com

STANDARD/RACK RATES

Rates from \$760

Rates include butler service, change of clothing pressed on arrival, tea/coffee on arrival, daily fresh fruit and mineral water, Wi-Fi, laptops in guest rooms, complimentary movies, personalized stationary and fitness center access.

**THE LANESBOROUGH
LONDON**

These published rates, in US dollars, serve only as a guideline for travel planning and may vary based on season, currency exchange rates and other factors. The latest rates, including preferred Andrew Harper rates, are available to our subscribers booking online, directly with the hotels or through the Andrew Harper Travel Office. When booking direct, always provide your Andrew Harper subscriber number. Subscriber benefits are available only in conjunction with Andrew Harper rates.

TO ENSURE RECEIPT OF YOUR SUBSCRIBER BENEFITS, CONTACT THE ANDREW HARPER TRAVEL OFFICE AT (800) 375-4685 OR EMAIL RESERVATIONS@ANDREWHARPER.COM

LONDON, ENGLAND

The Savoy

“Glamorous, impressively reincarnated grand hotel affording fine views of the Thames from Savoy Court, just off the Strand. Art deco and Edwardian accommodations reflect contrasting threads of hotel history; all provide flawless comfort, abundant amenities and spacious modern baths. Voluptuous new Beaufort Bar, art deco River Restaurant for modern French cuisine, nostalgic Savoy Grill and animated American Bar. Gym, massage and beauty treatments, atrium swimming pool.”

—Andrew Harper

AH Andrew Harper benefits include: the best available non-restricted rates; an upgrade, when available at check-in; daily full English breakfast served at the restaurant or in room; a 50 GBP hotel credit per room (not valid at Savoy Grill or for retail purchases); and when booking a One-Bedroom Suite or higher room category, return airport transfers to Heathrow or Gatwick in an S-Class Mercedes or similar vehicle.

HIGHLIGHTS

- Iconic
- Edwardian
- Art deco
- River views
- Fine dining

ACCOMMODATIONS

268 rooms, including 72 suites

ANDREW HARPER ACCOLADES

Recommended since 2011

GETTING THERE

37 minutes from Heathrow Airport (LHR) by taxi

STANDARD/RACK RATES

Rates from \$905
Rates include fitness center access.

Book this property online at AndrewHarper.com.



WEST HOATHLY, SUSSEX, UNITED KINGDOM

Gravetye Manor

“Elizabethan stone mansion-hideaway within 35 acres of woodland gardens, 45 minutes south of London. Oak paneling, fine antiques, clubby parlors and fragrant log fires foster an exceptionally civilized environment. Guest rooms feature period furniture and well-equipped baths. Request one of the ‘Large’ category rooms in the North Wing, furnished with king/twin beds, dining tables, comfortable chairs and original art deco baths. Intimate gourmet restaurant with superior wine list serves modern English cuisine.” —Andrew Harper

HIGHLIGHTS

- Quintessential English manor
- World-renowned gardens
- Close to LGW; no plane noise
- Less than two hours from ports
- Perfect for pre-/post-cruise

ACCOMMODATIONS

17 rooms, including one suite

ANDREW HARPER ACCOLADES

Recommended since 1979

GETTING THERE

20 minutes from London Gatwick Airport (LGW) by car

STANDARD/RACK RATES

Rates from \$460
Rates include room tax, daily full breakfast served at the restaurant or in room, Wi-Fi and parking.

AH Andrew Harper benefits include: the best available non-restricted rates; an upgrade, when available at check-in; a complimentary aperitif with dinner; and a one-way airport transfer from Gatwick or Heathrow. (Heathrow transfer requires a minimum two-night stay.)





LONDON, ENGLAND

The Stafford London by Kempinski



“Ideally located hotel in three uniquely designed buildings surrounding a 17th-century courtyard next to Green Park. Rooms in Main House retain residential feel with Edwardian-style décor, comfortable period pieces, marble baths. Carriage House lodgings within a converted 350-year-old stable feature original timber beams and traditional décor.

In Stafford Mews, Junior and Master suites contain mix of antique and modern furniture with understated wallpaper and fabrics, ample closets, spacious marble baths with tubs and walk-in showers. Convivial and relaxing ambience exemplified by the celebrated American Bar, cozy traditional lounges with log fires, and exceptional concierge. Also fitness suite.”

—Andrew Harper

AH Andrew Harper benefits include: preferred rates; an upgrade, when available at check-in; daily continental breakfast served at the restaurant or in room; one complimentary lunch or dinner for two from a set menu in The Lyttelton Restaurant (excluding wine) per room; and a seasonal welcome amenity per room.

Book this property online at AndrewHarper.com.

These published rates, in US dollars, serve only as a guideline for travel planning and may vary based on season, currency exchange rates and other factors. The latest rates, including preferred Andrew Harper rates, are available to our subscribers booking online, directly with the hotels or through the Andrew Harper Travel Office. When booking direct, always provide your Andrew Harper subscriber number. Subscriber benefits are available only in conjunction with Andrew Harper rates.

HIGHLIGHTS

- Quintessentially British
- Fantastic central location
- Stroll to Buckingham Palace
- 380-year-old wine cellar
- The American Bar
- Mews building
- Carriage house suites
- Best of British cuisine
- Elegant atmosphere
- Personalized service

ACCOMMODATIONS

105 rooms, including 38 suites

ANDREW HARPER ACCOLADES

Recommended since 1984
2012 Readers' Choice Award-Winner

GETTING THERE

45 minutes from Heathrow Airport (LHR) by car

WEBSITE

www.kempinski.com/london

STANDARD/RACK RATES

Rates from \$450
Rates include Wi-Fi, daily newspaper and use of all leisure facilities.



The Stafford
London

KEMPINSKI



WORCESTERSHIRE, ENGLAND

Buckland Manor



“Charming 13th-century manor house-hotel at the edge of an unspoiled village near Broadway. Guest quarters feature antiques and rich wall coverings. Restful lounges have oak paneling, beamed ceilings, Oriental carpets, floral displays and log fires. Dining room features fresh local produce, with herbs coming from the manor’s own gardens. Amenities include ornamental gardens with a running stream, tennis court, and miles of pastoral walking trails. The Royal Shakespeare Theatre in Stratford-upon-Avon is 30 minutes away.” —*Andrew Harper*

AH

Andrew Harper benefits include: preferred rates; an upgrade, when available at check-in; an afternoon cream tea for two per room; and a tour of the wine cellar.

HIGHLIGHTS

- 13th-century country house
- Beautiful, idyllic gardens
- Located in heart of Cotswolds
- Award-winning restaurant
- Award-winning wine list
- Children over age 12 welcome
- On-site tennis court
- Golf nearby
- Nearby horse rental
- Cotswold tours

ACCOMMODATIONS

13 rooms

ANDREW HARPER ACCOLADES

Recommended since 1985

GETTING THERE

60 minutes from Birmingham Airport (BHX) by car

WEBSITE

www.bucklandmanor.co.uk

STANDARD/RACK RATES

Rates from \$473

Rates include taxes, daily full breakfast served at the restaurant or in room, Wi-Fi and valet parking.



These published rates, in US dollars, serve only as a guideline for travel planning and may vary based on season, currency exchange rates and other factors. The latest rates, including preferred Andrew Harper rates, are available to our subscribers booking online, directly with the hotels or through the Andrew Harper Travel Office. When booking direct, always provide your Andrew Harper subscriber number. Subscriber benefits are available only in conjunction with Andrew Harper rates.

TO ENSURE RECEIPT OF YOUR SUBSCRIBER BENEFITS, CONTACT THE ANDREW HARPER TRAVEL OFFICE AT (800) 375-4685 OR EMAIL RESERVATIONS@ANDREWHARPER.COM

WHAT *Hideaway Report* SUBSCRIBERS ARE SAYING

“We consider Andrew Harper the most genuine and authentic of all evaluations.”

BALLYFIN, IRELAND

Ballyfin Demesne

“Recently restored 1826 Regency mansion, widely regarded as one of the architectural gems of Ireland. Elegant public spaces.

Each room individually decorated with authentic furniture, resplendent fabrics, original art. Meals served in exquisite State Dining Room; charming, congenial Ballyfin Bar; enviably stocked wine cellar. Spa; 46-foot indoor pool; fishing, shooting, golf, hiking, falconry can be arranged. Children 12 and older welcome.” —*Andrew Harper*

AH **Andrew Harper benefits include:** the best available non-restricted rates; an upgrade, when available at check-in; a private tour of the house and demesne; and a private tour of the kitchen with the executive chef and his team.

Book this property online at AndrewHarper.com.

HIGHLIGHTS

- Period house
- Scenic countryside
- Gourmet food
- Resort activities
- Spa

ACCOMMODATIONS

15 rooms, including two suites

ANDREW HARPER ACCOLADES

Recommended since 2012
2013 Grand Award-Winner

GETTING THERE

70 minutes from Dublin Airport (DUB) by car

STANDARD/RACK RATES

Rates from \$1,200
Rates include tax, gratuity, all meals, snacks, non-alcoholic beverages, pre-dinner drinks reception, select on-site activities, laundry, pressing service and Wi-Fi.



BALLYVAUGHAN,
COUNTY CLARE, IRELAND

Gregans Castle Hotel

“Family-owned country house hotel in the Burren. Large windows in guest rooms provide majestic views; some have private gardens; attractive baths feature marble floors and sizeable tubs. Delicious locally sourced food served in elegant dining room; relaxing bar with turf fire. In-room massage, scenic drives and walks, boat trips along dramatic Cliffs of Moher, golf at renowned Lahinch Golf Club. Closed late November to mid-February.” —*Andrew Harper*

AH Andrew Harper benefits include: an upgrade, when available at time of booking; the choice of a boat cruise for two under The Cliffs of Moher or a private tour of the Caher Bridge Garden for two; and late checkout, when available.

HIGHLIGHTS

- Bay and mountain views
- Award-winning restaurant
- Walking and horse riding
- Near Cliffs of Moher
- Family-run since 1976

ACCOMMODATIONS

21 rooms, including six suites

ANDREW HARPER ACCOLADES

Recommended since 1981

GETTING THERE

One hour from Shannon Airport (SNN) by car

STANDARD/RACK RATES

Rates from \$270
Rates include taxes, daily full Irish breakfast served at the restaurant or in room, Wi-Fi and parking.

CASHEL, IRELAND

Cashel House Hotel

“At the head of Cashel Bay in the wild and scenic Connemara region. Cozy bar, library, homey drawing room warmed by turf fires. Guest quarters include bi-level Garden Suites with Jacuzzi baths and king beds. Conservatory restaurant offers variety of fresh seafood, local lamb/beef dishes, Irish cheeses. Memorable walks, tennis, guided pony treks, fishing, historic/natural sites nearby, Connemara Golf Club’s scenic Ballyconneely championship links.”
—*Andrew Harper*

AH Andrew Harper benefits include: preferred rates; an upgrade, when available at check-in; an afternoon tea on arrival; and a private tour of the hotel gardens and history of the house.

HIGHLIGHTS

- Mid-19th-century country house
- In the heart of Connemara
- 50 acres, award-winning gardens
- Hotel’s own private beach
- Guided walks & other activities

ACCOMMODATIONS

30 rooms, including 13 suites

ANDREW HARPER ACCOLADES

Recommended since 1981

GETTING THERE

Two hours 15 minutes from Shannon Airport (SNN) by car

STANDARD/RACK RATES

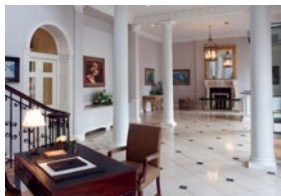
Rates from \$230
Rates include taxes and daily full breakfast served at the restaurant or in room.





DUBLIN, IRELAND

The Merrion Hotel



“Gracious 142-room hotel occupying four beautifully restored Georgian townhouses in a fashionable downtown district. Guest rooms, furnished with Irish fabrics and antiques, include comfortable armchairs, writing desks and spacious marble baths. Most rooms have views of the Parliament buildings or the hotel’s gardens. Irish art adorns the elegantly appointed Drawing Rooms and Bar No. 23, as well as gastronomic

Restaurant Patrick Guilbaud and The Cellar, serving simple Irish cuisine. Dublin’s prestige address for discerning travelers.” —*Andrew Harper*

AH Andrew Harper benefits include: preferred rates; an upgrade, when available at check-in; daily full breakfast served at the restaurant; a 50 EUR food and beverage credit per room (not valid at Restaurant Patrick Guilbaud); and a copy of The Merrion’s Art Catalogue.

Book this property online at AndrewHarper.com.

HIGHLIGHTS

- Magnificent collection of art
- 60-foot infinity-edge pool
- Private landscaped gardens
- City-center location
- Located opposite government buildings
- Ireland’s only two-Michelin-star restaurant
- 2,200-square-foot penthouse suite
- 123 bedrooms and 19 suites
- Valet parking
- Six conference and banquet rooms

ACCOMMODATIONS

142 rooms, including 19 suites

ANDREW HARPER ACCOLADES

Recommended since 1998

GETTING THERE

25 minutes from Dublin Airport (DUB) by car

WEBSITE

www.merrionhotel.com

STANDARD/RACK RATES

Rates from \$660

Rates include taxes, Wi-Fi and spa access.

The
MERRION
DUBLIN

These published rates, in US dollars, serve only as a guideline for travel planning and may vary based on season, currency exchange rates and other factors. The latest rates, including preferred Andrew Harper rates, are available to our subscribers booking online, directly with the hotels or through the Andrew Harper Travel Office. When booking direct, always provide your Andrew Harper subscriber number. Subscriber benefits are available only in conjunction with Andrew Harper rates.

TO ENSURE RECEIPT OF YOUR SUBSCRIBER BENEFITS, CONTACT THE ANDREW HARPER TRAVEL OFFICE AT (800) 375-4685 OR EMAIL RESERVATIONS@ANDREWHARPER.COM

KENMARE, COUNTY KERRY,
IRELAND

Sheen Falls Lodge

“A lavish manor house set on 300 acres, this is one of Ireland’s most stylish country hotels. Rooms and suites are spacious and decorated with marble baths. Its fine-dining restaurant, La Cascade, features a menu of dishes made almost entirely with the bounty of Ireland’s fields and seas. At the center of the health club is a 50-foot pool. Also facilities for tennis, golf, horseback riding and fishing.” —*Andrew Harper*

AH Andrew Harper benefits include: preferred rates; an upgrade, when available at check-in; daily continental breakfast served at the restaurant or in room; a welcome bottle of wine per room; and a tour of Kenmare in the hotel’s 1936 vintage Buick.

Book this property online at AndrewHarper.com.

HIGHLIGHTS

- Views of waterfalls or bay
- 15 miles of salmon fishing
- Falconry & other activities
- Six cottages for private rental
- Located on the Ring of Kerry

ACCOMMODATIONS

66 rooms, including 20 suites

ANDREW HARPER ACCOLADES

Recommended since 1992

GETTING THERE

45 minutes from Kerry Airport (KIR) by car

STANDARD/RACK RATES

Rates from \$360
Rates include taxes, spa access, Wi-Fi and parking.

STRAFFAN, COUNTY KILDARE,
IRELAND

The Kildare Hotel, Spa & Country Club

“Mansion-hotel on vast woodland estate (including two Arnold Palmer-designed golf courses) beside River Liffey. Accommodations decorated with traditional furnishings; marble baths with soaking tubs, separate tiled showers. Fine art, tapestries, antiques adorn public lounges and award-winning Modern Irish dining room. Legend’s clubhouse bar and restaurant overlooks 18th green. Health/fitness spa with indoor pool, private trout and salmon beats, clay target shooting, horseback riding, garden walks.” —*Andrew Harper*

AH Andrew Harper benefits include: the best available non-restricted rates; a wine cellar, hotel art and history tour; for stays of two nights or longer, a 50 EUR leisure credit per person; and when booking a Deluxe Room or Liffey Suite, an upgrade, when available at check-in.

HIGHLIGHTS

- Five-star Irish country house
- 550 acres of Irish countryside
- Individually decorated rooms
- Elegant & luxurious interiors
- 24-hour valet & room service

ACCOMMODATIONS

69 rooms, including 13 suites

ANDREW HARPER ACCOLADES

Recommended since 1995

GETTING THERE

30 minutes from Dublin Airport (DUB) by car

STANDARD/RACK RATES

Rates from \$370
Rates include taxes, daily full breakfast served at the restaurant, spa access, driving range, Wi-Fi and parking.



WHAT *Hideaway Report* SUBSCRIBERS ARE SAYING

“I truly enjoy my subscription and the great hotels, restaurants and service I experience as a result.”

EDINBURGH, SCOTLAND

The Balmoral

“Distinguished Edwardian hotel at the eastern end of Princes Street, the city’s major thoroughfare, convenient to shopping and attractions. The stylish rooms and suites, many with views toward Edinburgh Castle, have high ceilings and combine contemporary elegance and traditional Scottish charm. Public areas include the popular Palm Court and gourmet one-star number one dining room, plus a chic contemporary brasserie and striking Balmoral Bar.” —*Andrew Harper*

AH **Andrew Harper benefits include:** the best available non-restricted rates; an upgrade, when available at check-in; daily full breakfast served at Hadrian’s Brasserie; a welcome amenity per room; and a 75 GBP food and beverage credit per room.

Book this property online at AndrewHarper.com.

HIGHLIGHTS

- Landmark luxury hotel
- Exemplary service
- Michelin-starred restaurant
- Urban spa retreat
- Iconic castle views

ACCOMMODATIONS

188 rooms, including 20 suites

ANDREW HARPER ACCOLADES

Recommended since 1992

GETTING THERE

30 minutes from Edinburgh Airport (EDI) by car

STANDARD/RACK RATES

Rates from \$600

Rates include taxes and spa access.

These published rates, in US dollars, serve only as a guideline for travel planning and may vary based on season, currency exchange rates and other factors. The latest rates, including preferred Andrew Harper rates, are available to our subscribers booking online, directly with the hotels or through the Andrew Harper Travel Office. When booking direct, always provide your Andrew Harper subscriber number. Subscriber benefits are available only in conjunction with Andrew Harper rates.





PERTHSHIRE, SCOTLAND

The Gleneagles Hotel



“Imposing golf resort on an 850-acre estate boasting three 18-hole championship courses and a sophisticated sports complex, 60 minutes northwest of Edinburgh. The 232 elegant accommodations are done in contemporary or traditional décor; some of the 26 spacious suites have baths with separate tubs and walk-in showers. The delightful country club atmosphere is enhanced by lavish salons and fine restaurants that

offer Scottish, Mediterranean and grill menus and are highlighted by two-star Andrew Fairlie for gourmet French cuisine. Also Golf Academy, destination ESPA spa and state-of-the-art fitness gym (with two indoor pools, including 60-foot lap pool), tennis courts, walking/running tracks, mountain-biking, fishing, shooting school, equestrian center and falconry/gun dog schools.” —*Andrew Harper*

AH

Andrew Harper benefits include: preferred rates; an upgrade, when available at check-in; an afternoon tea for two per room; and for stays of two nights or longer, one round of golf for two per room.

Book this property online at AndrewHarper.com.

HIGHLIGHTS

- Style of a French chateau
- Set in an 850-acre countryside
- A Leading Hotel of the World
- Two-Michelin-star restaurant
- Host venue 2014 Ryder Cup
- Award-winning Spa by ESPA
- ESPA Life complimentary and alternative medicine practitioners
- Three championship golf courses
- An array of outdoor activities
- Choice of four restaurants

ACCOMMODATIONS

232 rooms, including 26 suites

ANDREW HARPER ACCOLADES

Recommended since 1984
2012 Readers' Choice Award-Winner

GETTING THERE

One hour from Glasgow International Airport (GLA) or Edinburgh Airport (EDI) by car

WEBSITE

www.gleneagles.com

STANDARD/RACK RATES

Rates from \$700 per person
Rates include taxes, daily full breakfast served at the restaurant or in room, railway station transfers and access to resort facilities including spa, fitness center with scheduled classes, pitch and putt, croquet, tennis, hiking trails, stables and falconry.



These published rates, in US dollars, serve only as a guideline for travel planning and may vary based on season, currency exchange rates and other factors. The latest rates, including preferred Andrew Harper rates, are available to our subscribers booking online, directly with the hotels or through the Andrew Harper Travel Office. When booking direct, always provide your Andrew Harper subscriber number. Subscriber benefits are available only in conjunction with Andrew Harper rates.

TO ENSURE RECEIPT OF YOUR SUBSCRIBER BENEFITS, CONTACT THE ANDREW HARPER TRAVEL OFFICE AT (800) 375-4685 OR EMAIL RESERVATIONS@ANDREWHARPER.COM

DESTINATION SPECIALIST, YACHT & CRUISE PARTNERS ALSO INCLUDED IN THIS SECTION

- Adventures In Golf • *United States*
- Crystal Cruises • *Worldwide*
- Dream Escape • *Ireland*
- Frontiers International Travel
• *Canal Barge Cruises in Europe*
- Hebridean Island Cruises • *Europe*
- Sea Cloud • *Worldwide*
- Seabourn Cruises • *Worldwide*
- SEADREAM YACHT CLUB • *Worldwide*
- Silversea Cruises • *Worldwide*
- Travcoa • *Worldwide*

VILLA PARTNERS ALSO INCLUDED IN THIS SECTION

- Beautiful Places • *Worldwide*
- LaCure Villas • *Worldwide*



- 1 The Gleneagles Hotel • *Perthshire*
- 2 The Balmoral • *Edinburgh*



For locations of any additional Harper Alliance properties, please visit AndrewHarper.com.

- 1 The Merrion • *Dublin*
- 2 The Kildare Hotel, Spa & Country Club • *County Kildare*
- 3 Gregans Castle Hotel • *County Clare*
- 4 Cashel House Hotel • *Cashel*
- 5 Sheen Falls Lodge • *County Kerry*
- Ballyfin Demesne • *Ballyfin*



- 1 Buckland Manor • *Worcestershire*
- 2 Athenaeum • *London*
- The Dorchester • *London*
- The Goring • *London*
- The Halkin by COMO • *London*
- The Lanesborough • *London*
- The Savoy • *London*
- The Stafford London by Kempinski • *London*
- 3 Gravetye Manor • *West Hoathly*
- 4 Chewton Glen Hotel & Spa • *Hampshire*