

TO: CENTRAL SERVICE DISTRIBUTORS
AUTHORIZED AUTOMOTIVE SERVICE DISTRIBUTORS
AS-1975 MANUAL OWNERS

SUBJECT: G.M. GLOVE LATCH HOUSING

NO: AS-1095

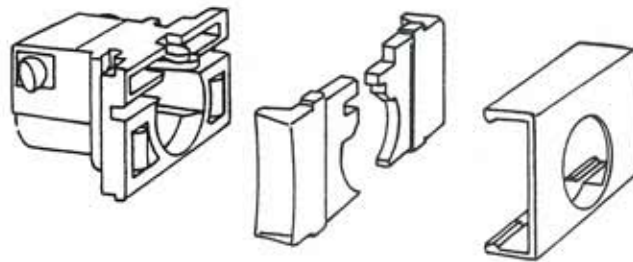
DATE: 4-1-87

FILE IN: BULLETIN BINDER

Over the last couple of years we have seen the addition of a dozen or more part numbers to our system to accommodate the variety of colors used in this application.

Effective immediately we will provide only the **Black housing part number 608788** for the after market program.

If you must replace the housing in a vehicle, simply exchange the cover from that assembly for the black cover on the new assembly.



You will note from the above illustration it is a simple procedure to change the face cap of these latches.

BRIGGS & STRATTON CORPORATION

Service Department