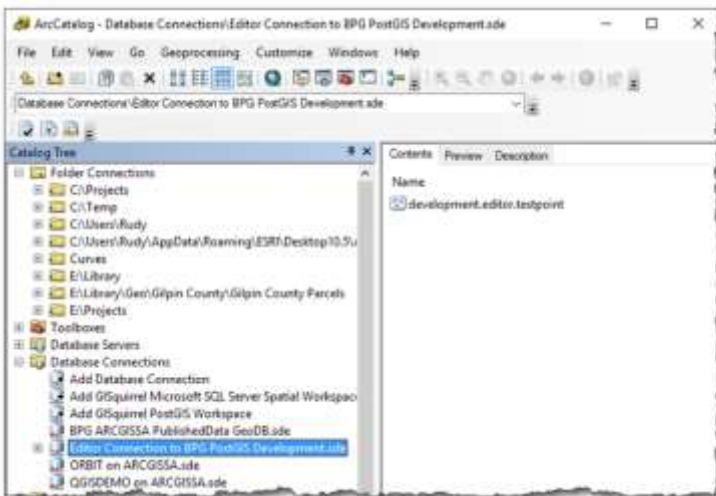


# Technical Note 1701.03

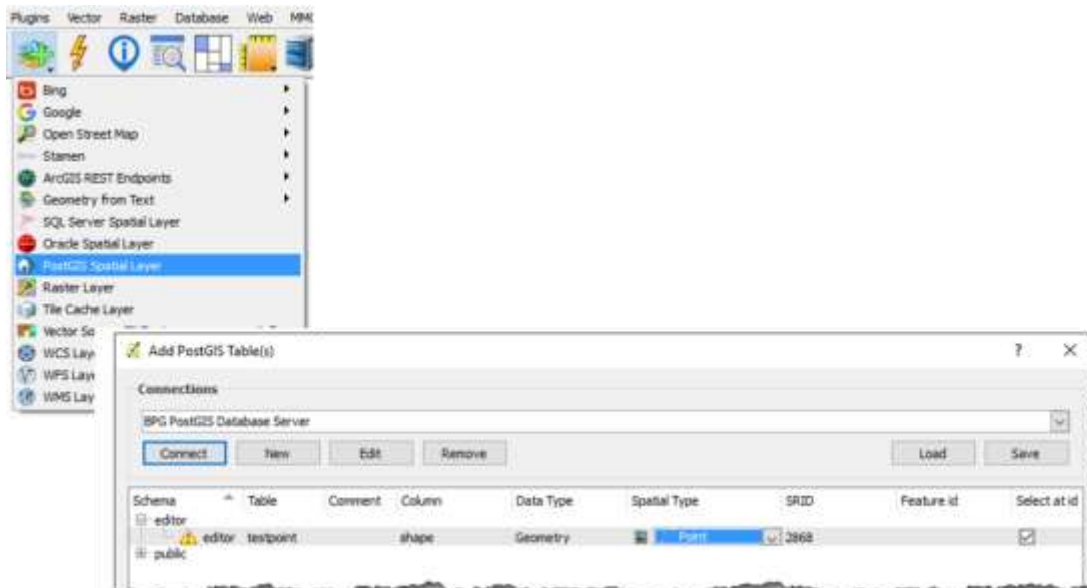
## Modifying Feature Classes created in ArcGIS for Use in OpenGIS

If ArcGIS geodatabases are created with the PG\_GEOMETRY spatial datatype, OpenGIS can make use of the geodatabase's spatial tables (i.e., feature classes). This Technical Note explains the process of configuring geodatabase feature classes for compatibility with OpenGIS.

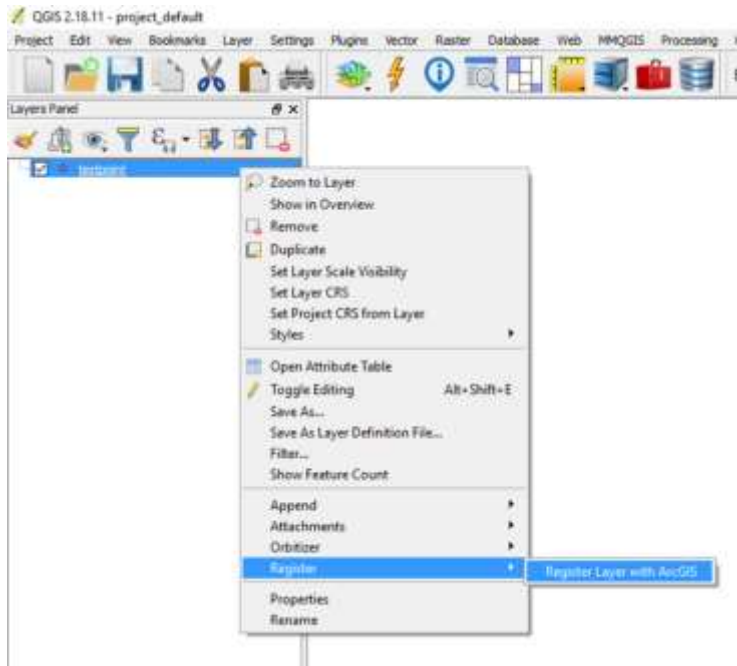
1. In an editor-schema geodatabase, create an ArcGIS feature class (or a feature class within a feature dataset). This example will use 'testpoint', a point feature class:



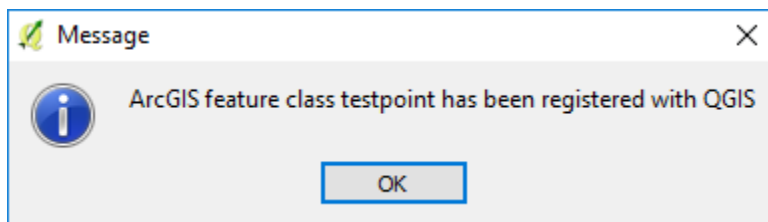
2. In OpenGIS, add the testpoint layer. Its spatial type will have to be manually selected:



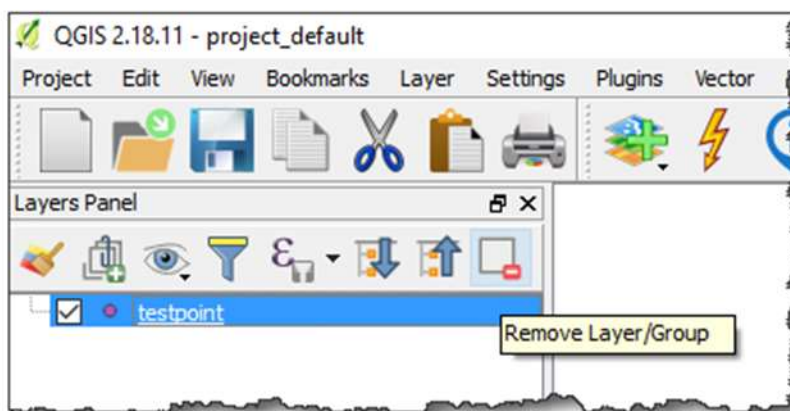
3. Right-click on the testpoint layer in the Layers Panel and select the Register Layer with ArcGIS option:



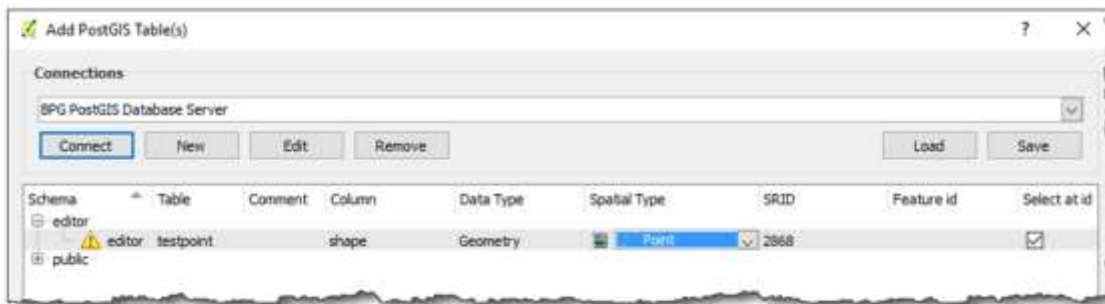
After executing, it will display this message:



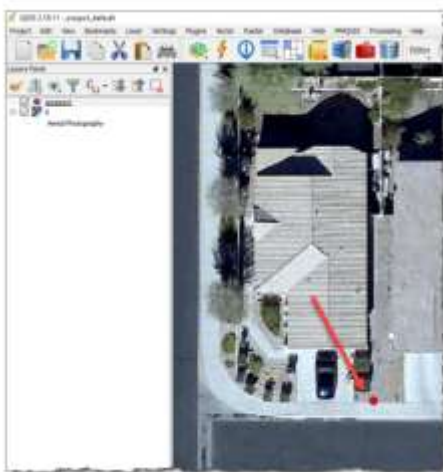
4. VERY IMPORTANT!! Remove the layer:



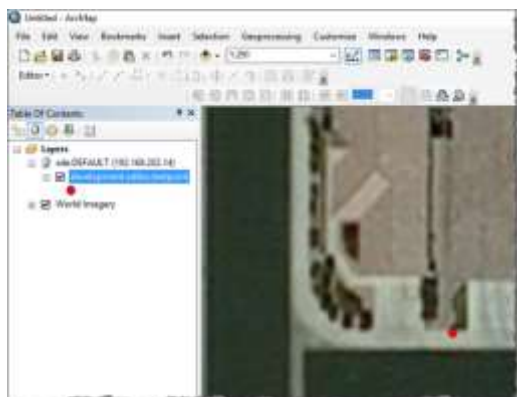
5. Add it in again as per step 2:



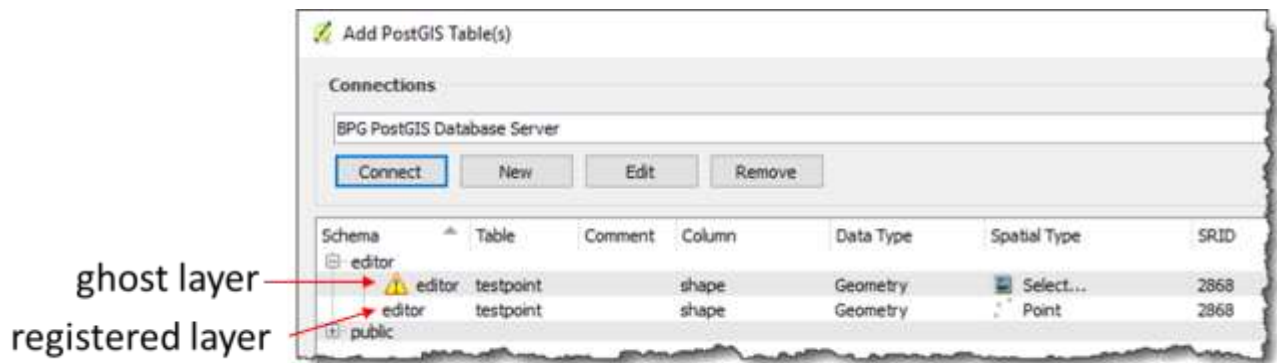
6. At this point, the objectid primary key should auto-increment (and begin at 10,000,000) upon editing:



7. Edits will be shown in ArcGIS as well:



8. For some reason, a “ghost” layer will be present in the QGIS PostGIS table catalog as long as the ‘testpoint’ layer is present. *Always be sure to select the registered layer for any edit or display work.*



9. When editing in ArcGIS, versioning editing must be turned off:

