

Mom's Babies by FusionBeads.com



Approximate finished length: 8 inches (adjustable)

Beads and other products needed for one bracelet:

- 1 - 7.1mm Topaz Swarovski Crystal Flat Back Rhinestone - 2058 - SS34 - (FT1503)
- 1 - 2088 SS34 Sapphire Swarovski Crystal Xirius Flat Back Rhinestone - (FT2733)
- 1 - Ruby Swarovski Crystal Xirius Flat Back Rhinestone - 2088 - (SS34) - (FT2695)
- 1 - Pewter Heart Symbol Charm by TierraCast® - Antique Silver - 16mm - (SP2571)
- 1 - Pewter Alphabet Initial Charm by TierraCast® - M - Antique Silver - 16mm - (SP6405)
- 1 - Pewter Alphabet Initial Charm by TierraCast® - S - Antique Silver - 16mm - (SP6411)
- 1 - Pewter Alphabet Initial Charm by TierraCast® - F - Antique Silver - 16mm - (SP6398)
- 3 - Pewter SS34 Glue in Stepped Bezel Charm by TierraCast® - Rhodium - 16mm - (SP2573)
- 2 inches - Base Metal 6mm Curb Chain - Imitation Rhodium - (CN5435)
- 18 inches - Round Leather Cord - Natural Light Brown - 1.5mm - (SM5090)
- 1 - Superlon Bead Cord #18 - Green Blue - (SM5380)

Tools needed to complete the earrings:

- Chain Nose Pliers
- Xuron Thread and Fiber Scissors (TL3000)
- Crystal Katana by Crystal Ninja (TL2912)
- Tulip Tapestry Needle Set (TL2650)
- Super New Glue (TL2933)
- E6000 Adhesive 0.18 oz. Tube (TL2921)



Beading Techniques needed to complete the bracelet:

Gluing Swarovski Elements Crystal Rivoli Stones into a Rivoli Component
Opening and Closing a Jump Ring
Macrame - Adjustable Closure

Instructions to complete “Mom’s Babies” bracelet:

Step 1

Using a toothpick, apply a drop of E6000 adhesive to the inside of one bezel charm (see Gluing Swarovski Elements Crystal Rivoli Stones into a Rivoli Component Technique). Place one Sapphire crystal flat back onto the bezel charm, and press firmly using the Crystal Katana. Allow to dry.



Step 2

Repeat Step 1 with the Ruby crystal flat back and the Topaz crystal flat back and the two other bezel charms.



Step 3

The links of the chain are unsoldered and can be opened and closed like jump rings (see Opening and Closing a Jump Ring Technique). Open the tenth link in from one end of the six inch length of chain. So you will end up with a nine link length of chain.



Step 4

Open the second link on the nine link chain section from Step 3 and attach the S initial charm.



Step 5

In the same manner as Step 4, attach one charm per link in the following sequence:

- 1 – Sapphire bezel charm
- 1 – M initial charm
- 1 – Topaz bezel charm
- 1 – F initial charm
- 1 – Ruby bezel charm
- 1 – heart charm

The first and the ninth link will not have a charm attached.



Step 6

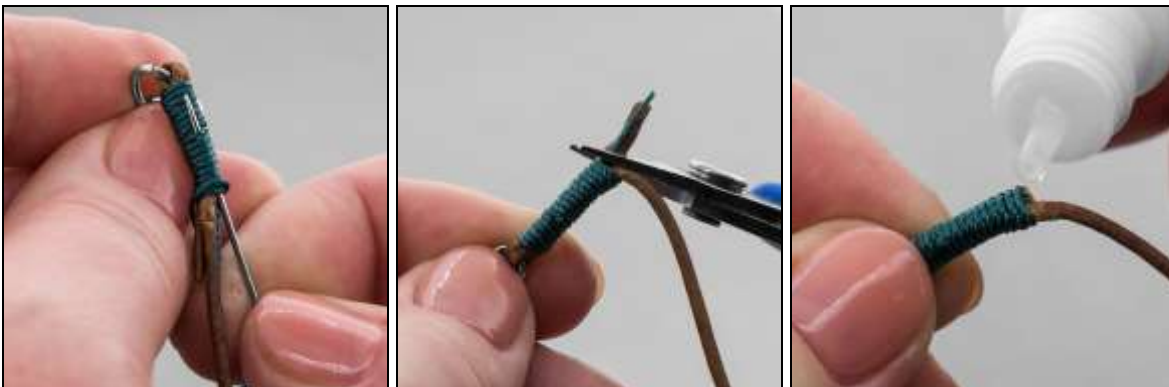
Cut the leather cord into two nine inch sections. Take one of the leather sections and fold about one inch over the end link of the chain and apply a small amount of Super New Glue. Allow to dry.

**Step 7**

Thread about 12 inches of bead cord onto a tapestry needle. Hold the tail end of the bead cord in between and parallel with leather cord strands near the fold. Wrap the other end of the bead cord around the doubled leather cord strands and the bead cord tail about 17 – 18 times, keeping the wraps close together.

**Step 8**

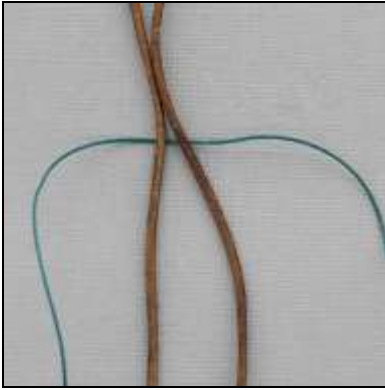
Thread the needle under half of the wraps so that the working end and tail are pointing in opposite directions. Pull both ends of the bead cord tightly, securing the wraps. Trim both ends of the cord and the leather tail close to the wraps. Apply a small amount of Super New Glue to the end for extra security.

**Step 9**

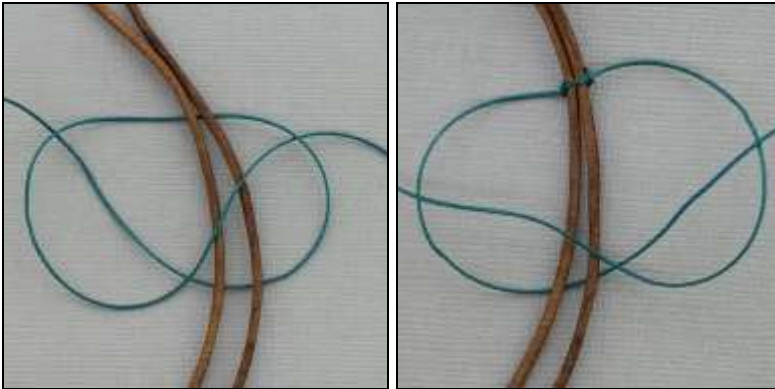
Repeat Step 8 with the second leather cord.

Step 10

Following Steps 22 – 26 of the Macrame - Adjustable Closure Technique, make an adjustable closure for the bracelet. Begin by forming a loose circle with the two leather strands, placing the unstrung ends of the leather cord parallel to each other. Center a 20-inch length of bead cord under the middle of the two leather cords.

**Step 11**

Tie a square knot with the 20-inch cord around the leather cords (see Steps 4 – 12 of the Macrame - Adjustable Closure Technique).

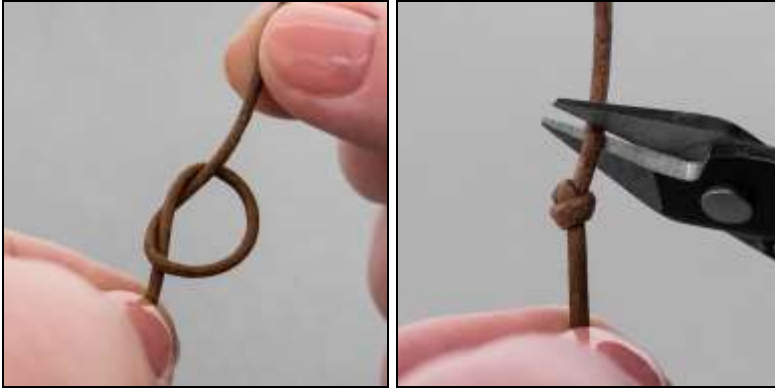
**Step 12**

In the same manner as in the previous step, continue tying square knots until this square knot base is about one inch long. Cut the excess tying cords close to the base. Secure the cut ends of the bead cords with Super New Glue.



Step 13

Tie an overhand knot at the end of each leather cord, trimming the cord end if needed.



*For step-by-step photos and instructions on these and other techniques, visit FusionBeads.com and select **Beading Techniques** from the top navigation bar. You'll find more *Inspiration jewelry ideas* at FusionBeads.com!*