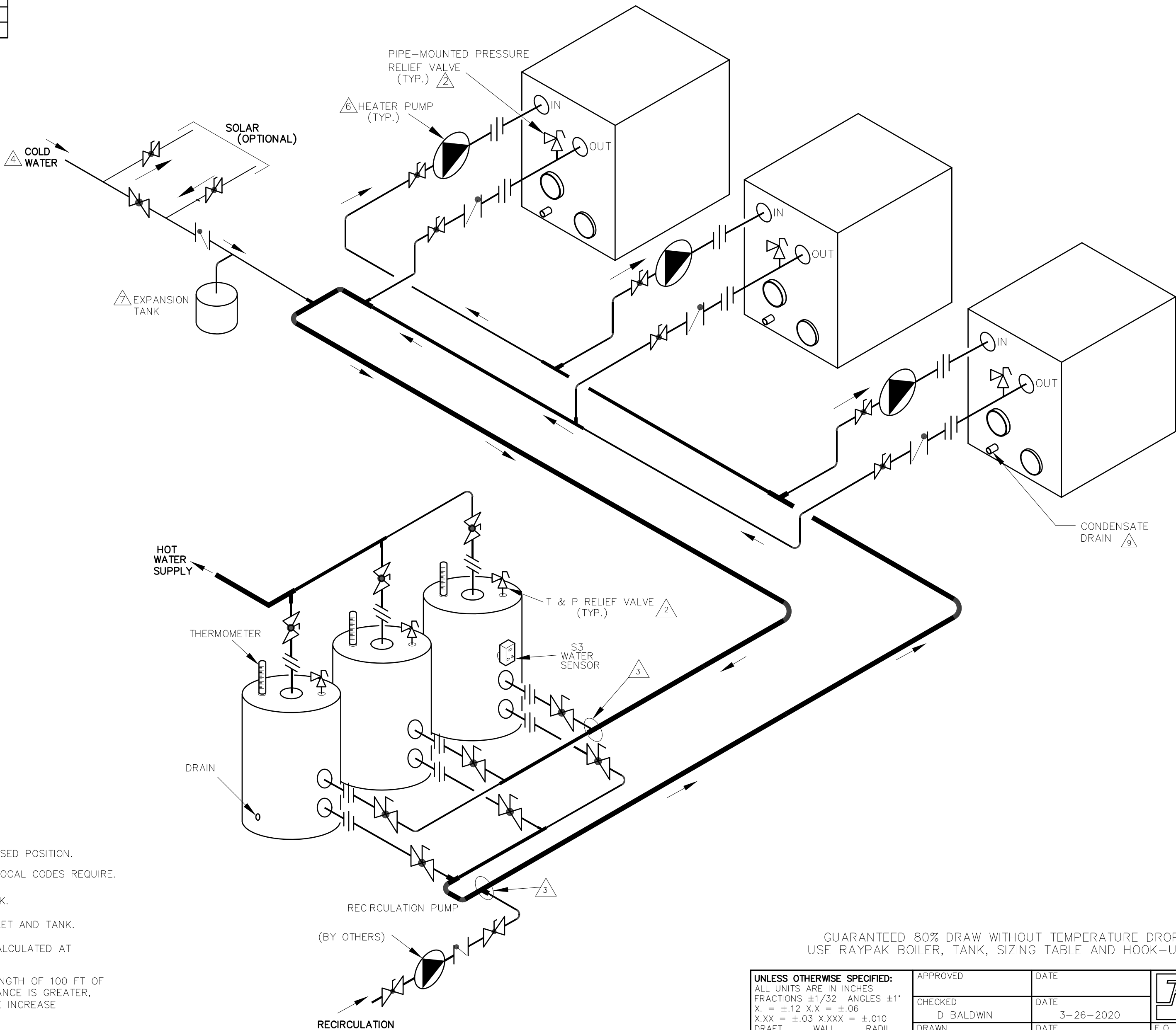


XFIIRE PIPE SIZES					
	1 UNIT PORT	MAX FLOW	2 UNITS	MAX FLOW	3 UNITS MAX FLOW
300B	2	38	2	76	3 114
400B	2	50	2-1/2	100	3 150
500B	2	62	2-1/2	124	4 186
650B	2	80	3	160	4 240
800B	2	90	4	180	4 270
1000B	2-1/2	90	4	180	4 270


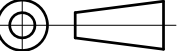
THIS PIPING DIAGRAM IS RAYPAK'S RECOMMENDATION AND IS NOT INTENDED TO REPLACE AN ENGINEERED PIPING SYSTEM DESIGNED BY A PROFESSIONAL ENGINEER.

REVISIONS					
REV	ZONE	DESCRIPTION	E.O.	BY	CHECK
0		INITIAL RELEASE. SUPERSEDES 8781.		RAN	3-9-20 DRB
A		REVISED FLOW ARROW AT RH BOILER OUTLET		DRB	12-7-23



- NOTES:
1. PLUMB SWING CHECK VALVE IN GRAVITY-CLOSED POSITION.
 2. PIPE ALL RELIEF VALVES TO DRAIN, OR AS LOCAL CODES REQUIRE.
 3. LOCATE TEE AS CLOSE AS POSSIBLE TO TANK.
 4. INSTALL COLD WATER BETWEEN HEATER OUTLET AND TANK.
 5. SEE CHART "PIPE SIZES" FOR PIPE SIZES, CALCULATED AT MAXIMUM FLOW, NOT TO EXCEED 7.5 FT/SEC.
 6. PUMP SIZING BASED ON MAX EQUIVALENT LENGTH OF 100 FT OF PIPING BETWEEN TANK AND HEATER. IF DISTANCE IS GREATER, THE PUMP MUST BE SIZED TO ACCOMMODATE INCREASE IN PIPING-RELATED LOSSES.
 7. PROVIDE FOR THERMAL EXPANSION OF HOT WATER IF A BACKFLOW PREVENTER, CHECK VALVE, WATER METER OR PRESSURE-REDUCING VALVE IS INSTALLED IN THE COLD WATER LINE.
 8. IF HOT WATER SETPOINT EXCEEDS 160°F WITH MAX FLOW, SPECIFY TYPE "H" - HYDRONIC BOILERS INSTEAD OF "WH" WATER HEATERS.
- CONDENSATE MUST BE PIPED TO AN APPROVED DRAIN. LOCAL CODE MAY REQUIRE PH TREATMENT PRIOR TO DRAIN.

GUARANTEED 80% DRAW WITHOUT TEMPERATURE DROP, USE RAYPAK BOILER, TANK, SIZING TABLE AND HOOK-UP DATA

UNLESS OTHERWISE SPECIFIED: ALL UNITS ARE IN INCHES FRACTIONS ±1/32 ANGLES ±1° X. = ±.12 X.X = ±.06 X.XX = ±.03 X.XXX = ±.010 DRAFT____ WALL____ RADII____ CONCENTRICITIES .020 DIA. SQUARENESS .015 IN./IN. BREAK EDGES .015 MAX. SURFACE FINISH PER ASME Y14.36M-1996	APPROVED	DATE	 OXNARD, CALIFORNIA	
	CHECKED D BALDWIN	DATE 3-26-2020		
	DRAWN R NASH	DATE 3-9-2020	E.O. SPR	SCALE NONE
	 RAYPAK PROPRIETARY AND CONFIDENTIAL INFORMATION This drawing contains Confidential and Proprietary Information of Raypak, Inc. All rights reserved by Raypak, Inc.			
TITLE PIPING, UNI-TEMP 80: 3 XFIIRE, 3 V TANKS				
MAT'L.	SERIES/MODEL WH	SIZE C	DWG. NO. 8906	REV A

ACAD: 8906.DWG
HEATERS SHOWN REPRESENT VARIOUS MODELS. BECAUSE INDIVIDUAL MODELS WILL VARY IN DESIGN AND SIZING, SEE EACH SPECIFIC HEATER TYPE FOR DETAILS.