

1 BEDROOM FLAT
LOVELACE GARDENS, SURBITON

£335,000

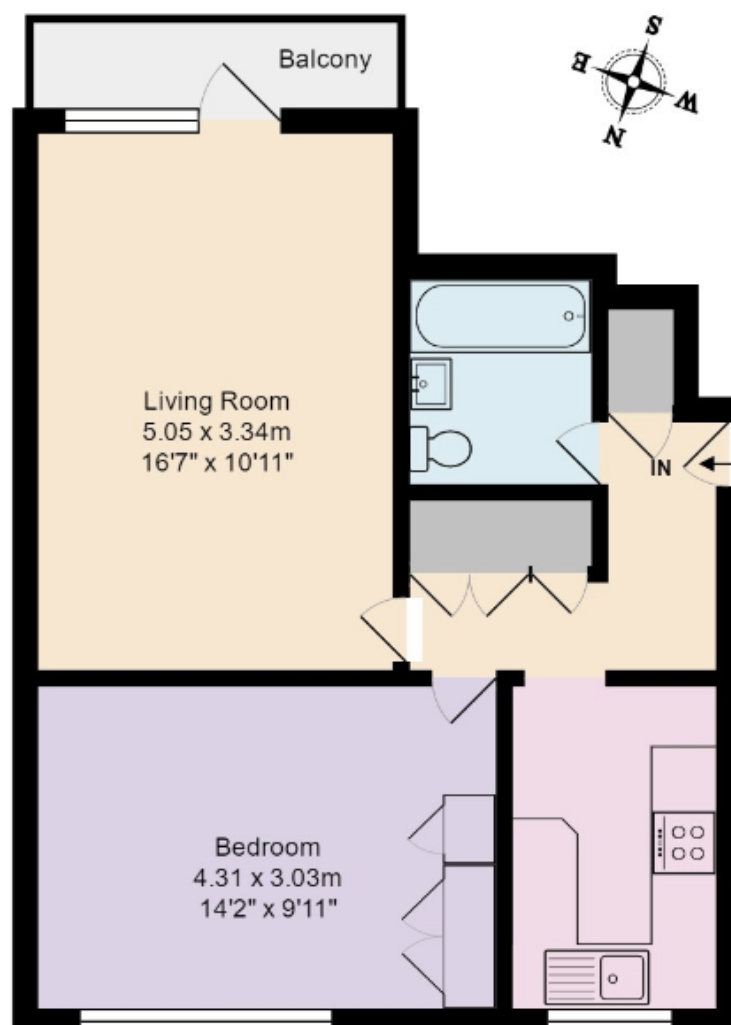


HJC are delighted to present this bright and spacious apartment with a balcony. Enjoying a very convenient location, close to the town centre and station, the accommodation includes a good size lounge, refitted contemporary kitchen, large light double bedroom with fitted wardrobes and stunning bathroom. The property also benefits from GCH, double glazing and communal gardens. No chain.



Napier Court, Lovelace Gardens, Surbiton

Approximate Gross Internal Area: 48.5 m² ... 522 ft²



All measurements are approximate and for illustrative purposes only.
Not to scale.

We have prepared these sales particulars as a general guide after a brief inspection of the property and with information supplied by the Vendors. No detailed survey was carried out nor were the services and appliances tested. Photographs are not comprehensive and no assumption should be made that the property remains as displayed. The floor plans are for representation purposes only as defined by the RICS Code of Measuring Practice. Measurements, room shapes and sizes are approximate and must not be relied on. No responsibility is taken for errors or omissions. All fixtures and fittings, carpets, curtains/blinds, lighting and kitchen equipment, whether fitted or not, are deemed to be removable by the Vendors unless specifically itemised. No representation is given as to the title of the property.

HJC

HIGHER VALUES

HJC Surbiton 020 8390 0404 | HJC Lettings 020 8390 9290 | HJC Thames Ditton 020 8398 3707
surbiton@hjc.co.uk | lettings@hjc.co.uk | thamesditton@hjc.co.uk

Reg no: 05272208 | VAT no: 720 5720 65