



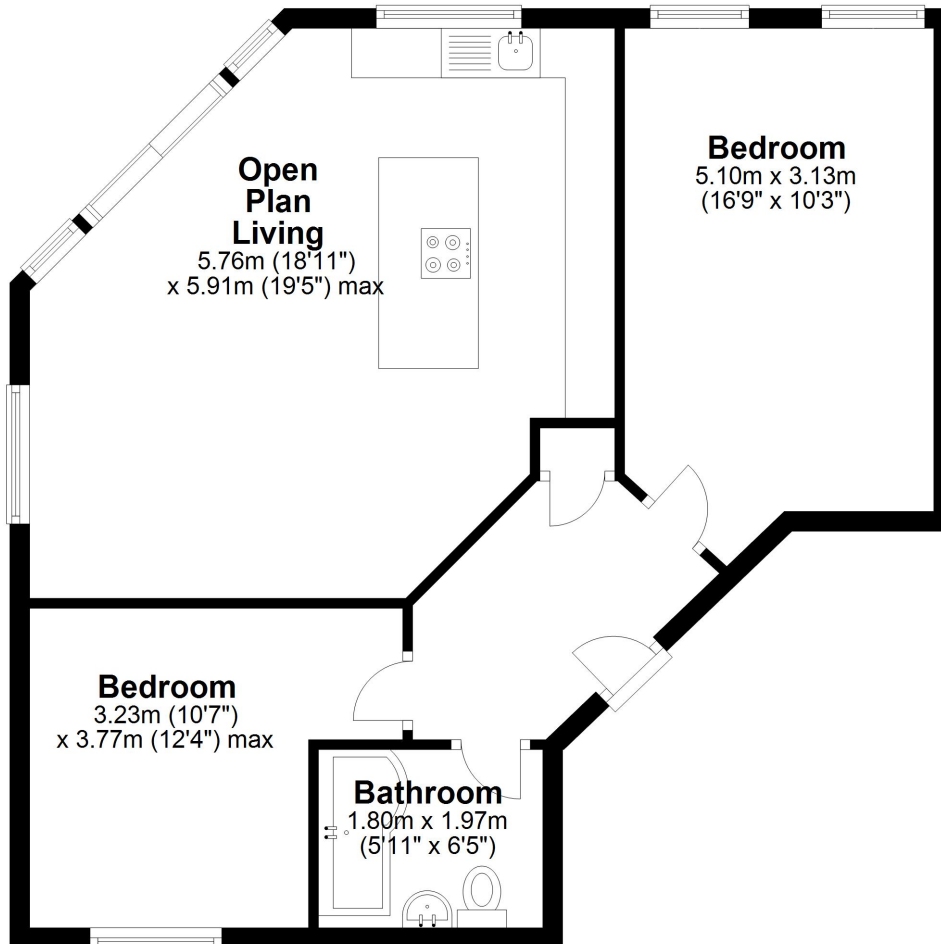
- Ground Floor City Quay Apartment For Sale
 - Two Bedrooms
- Open Plan Kitchen/ Living Area
 - Outdoor Terrace
- Allocated Parking Space
- Well Maintained Communal Gardens





Ground Floor

Approx. 65.3 sq. metres (702.5 sq. feet)



Total area: approx. 65.3 sq. metres (702.5 sq. feet)

These particulars do not form part of any offer or contract and must not be relied upon as statements or representations of fact. Any areas, measurements or distances are approximate. The text, photographs and plans are for guidance only and are not necessarily comprehensive. It should not be assumed that the property has all the necessary planning, building regulation or other consents and we have not tested services, equipment or facilities. Purchasers must satisfy themselves by inspection or otherwise.



Straightforward Sales & Lettings'

Title Number - MS495441

Local Authority- Liverpool

Council tax - Band D

Estimated Annual Council Tax Cost- £2195

Tenure - Leasehold

Lease Terms -999 Years From 27 July 2001

Remaining - 978 years

Ground Rent - Approx £76 quarterly

Service Charge - £114 pcm

Conservation Area - No

Flood Risk - Very Low

Floor Area - 688 ft2/ 64 m2



Satellite / Fibre TV Availability

BT

Sky

Broadband (estimated speeds)

Standard 7 mbps

Superfast 9 mbps

Ultrafast 1000 mbps

(Data source from sprift)

These particulars do not form part of any offer or contract and must not be relied upon as statements or representations of fact. Any areas, measurements or distances are approximate. The text, photographs and plans are for guidance only and are not necessarily comprehensive. It should not be assumed that the property has all the necessary planning, building regulation or other consents and we have not tested services, equipment or facilities. Purchasers must satisfy themselves by inspection or otherwise.