

NOBLE HOUSE, WOODSTOCK ROAD, GOLDERS GREEN, NW11 £2,000,000, Leasehold



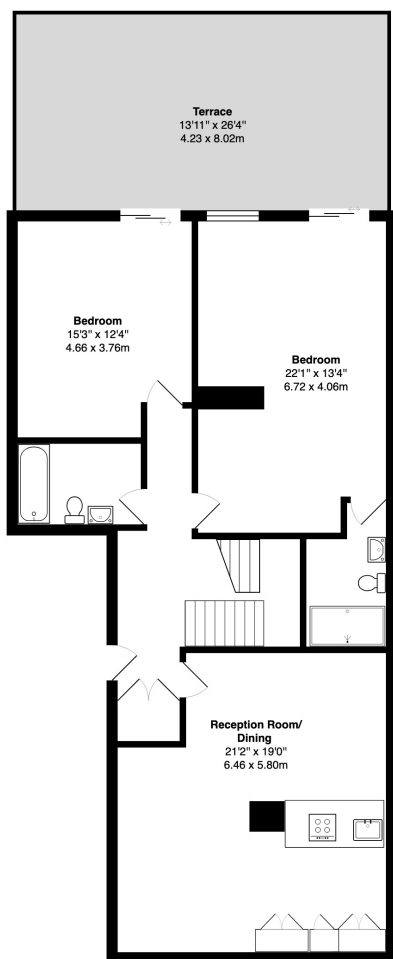
DREAMVIEW ESTATES ARE PRIVELEDGED TO OFFER TO THE MARKET THIS STUNNING NEW DEVELOPMENT OF 8 EXTREMELY SPACIOUS LUXURY FLATS WITH A LIFT, BUILT TO THE HIGHEST SPECIFICATION WITH SECURITY AND ALARMS

*BEING IN A PRIME LOCATION OF GOLDERS GREEN OF WOODSTOCK ROAD, IT IS IN EASY WALKING DISTANCE OF THE SHOPS AND TRANSPORT

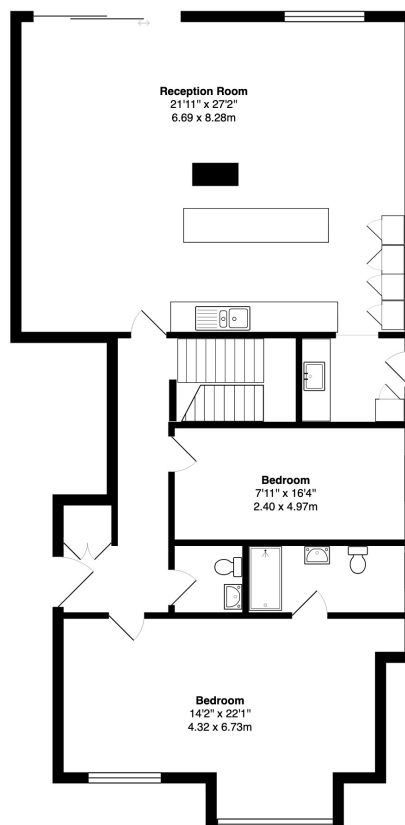
*THIS IS A GROUND AND LOWER GROUND DUPLEX FLAT WITH OWN GARDEN/PATION







Lower Ground floor



Ground floor

WoodStock Road, Golders Green, NW11

Total Gross Area: 2450 ft² ... 227.6 m² (excluding terrace)

All measurements are approximate and for identification guideline purposes only, not to scale.
Compliant with the RICS code of measuring practice

Dreamview Estates give notice to anyone reading these particulars that: (i) these particulars do not constitute part of an offer or contract; (ii) these particulars and any pictures or plans represent the opinion of the author and are given in good faith for guidance only and must not be construed as statements of fact; (iii) nothing in the particulars shall be deemed a statement that the property is in good condition otherwise; we have not carried out a structural survey of the property and have not tested the services, appliances or specified fittings.

Long Description

NOBLE HOUSE, WOODSTOCK ROAD, NW11 8ES

*STUNNING NEW DEVELOPMENT OF 8 EXTREMELY SPACIOUS LUXURY FLATS WITH A LIFT, BUILT TO THE HIGHEST SPECIFICATION WITH SECURITY AND ALARMS

*2 OF THE FLATS ALREADY SOLD!

*BEING IN A PRIME LOCATION OF GOLDERS GREEN OF WOODSTOCK ROAD, IT IS IN EASY WALKING DISTANCE OF THE SHOPS AND TRANSPORT

*SPECIFICATIONS INCLUDE:-

*BESPOKE FITTED KITCHENS FITTED WITH ALL APPLIANCES

*ALL BATH OR SHOWER ROOMS HAVE ITALIAN TILING

*UNDER FLOOR HEATING (SEPARATE ROOM CONTROLS)

*LED STRIP LIGHTING

*ALL FLATS ALARMED

*VIDEO ENTRYPHONE WITH CCTV

*AIR CONDITIONING

*OFF STREET PARKING

*FLAT 2 IS DUPLEX FLAT OF 2450 SQ FT/ 227 SQ MT ON THE GROUND AND LOWER GROUND FLOORS WITH HUGE ACCOMMODATION
THE LIFT CAN BE USED TO ACCESS THE LOWER GROUND FLOOR WHICH HAS ITS OWN ENTRYDOOR

THERE IS LARGE RECEPTION WITH OPEN PLAN KITCHEN AND SEPARATE UTILITY ROOM ON THE GROUND FLOOR WITH 2 OF THE BEDROOMS (1 WITH EN SUITE BATHROOM)
THE LOWER GROUND FLOOR PROVIDES 2 FURTHER BEDROOMS WITH EN SUITE BATHROOMS AND GAMES/TV ROOM WITH AN ADDITIONAL KITCHEN

THE FLAT HAS DIRECT ACCESS TO ITS OWN SECTION OF REAR GARDEN WHICH WILL ALSO INCLUDE A PATIO AND SUMMER HOUSE/CONSERVATORY

THE FLATS ARE ALL FINISHED TO A VERY HIGH STANDARD AND WILL BE OFFERED WITH NEW LONG LEASES

THE ASKING PRICE FOR FLAT 2 IS £2,000,000