

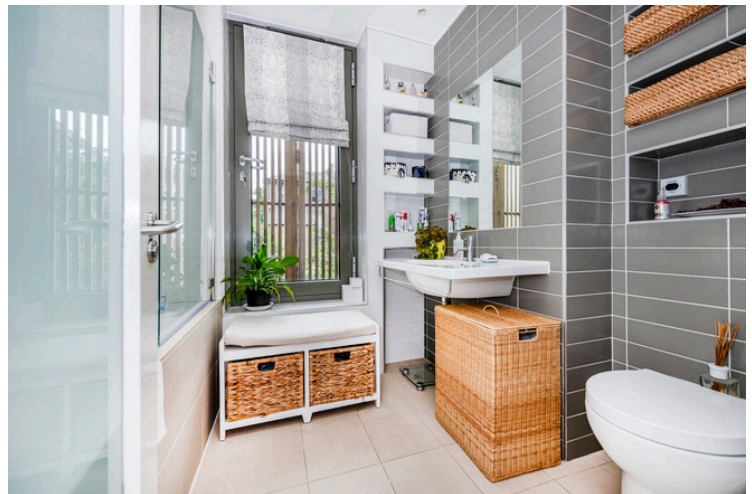


Patshull Road, NW5
£1,500 per week, For long let

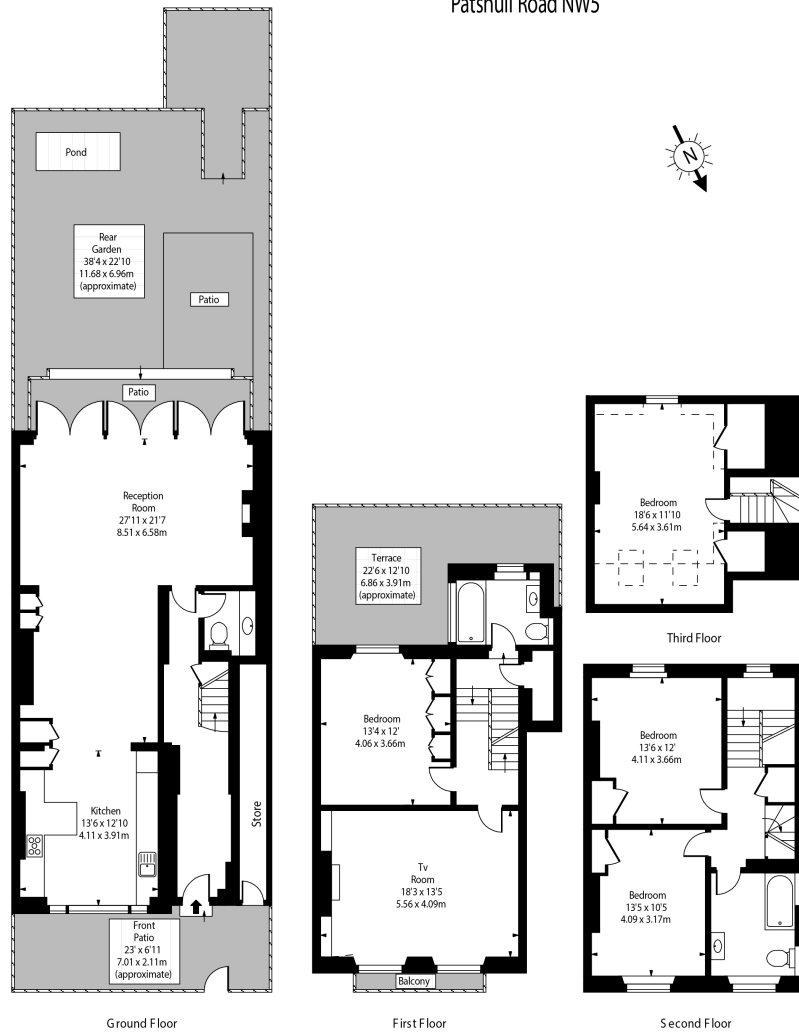


A particularly fine four/five bedroom semi-detached Victorian family house, ideally situated in a prime residential location close to Camden school for Girls. refurbished and extended to a very high standard with a delightful south-facing garden





Patshull Road NW5



Approx Gross Internal Area Including Restricted Heights 2269 Sq Ft - 211.06 Sq M
 Approx Gross Internal Area Excluding Restricted Heights 2164 Sq Ft - 201 Sq M
 (Excluding Store)

For Illustration Purposes Only - Not To Scale Floor Plan by www.nogaphotostudio.com Ref. No. 17243
 This floor plan should be used as a general outline for guidance only. Any intending purchaser or lessee should satisfy themselves by inspection, searches, enquiries and full survey as to the correctness of each statement. Any areas, measurements or distances quoted are approximate and should not be used to value a property or be the basis of any sale or let.

Salter Rex give notice to anyone reading these particulars that: (i) these particulars do not constitute part of an offer or contract; (ii) these particulars and any pictures or plans represent the opinion of the author and are given in good faith for guidance only and must not be construed as statements of fact; (iii) nothing in the particulars shall be deemed a statement that the property is in good condition otherwise; we have not carried out a structural survey of the property and have not tested the services, appliances or specified fittings.

Long Description

We are delighted to offer this wonderful four/five bedroom house offering flexible and beautifully presented accommodation in a peaceful position on the most sought after road in Kentish Town close to excellent schools and amenities.

The property is presented to an extremely high standard throughout and represents a blend of the character of the Victorian era together with all the conveniences of modern day living.

This substantial family home offers 2269 square feet of accommodation, briefly comprising; four/five double size bedrooms, two luxury bathrooms, guest cloakroom, large reception room, and a fantastic 40ft open plan kitchen reception room with a wide expanse of bi-fold doors opening on to to a beautifully landscaped 38ft South facing rear garden. The property additionally benefits from a secure bike storage area to the side.

Patshull Road is a peaceful most desirable residential location, a short distance from Camden School for Girls and within easy reach of the Underground, shops, restaurants and bars of Kentish Town Road. Available 26th August