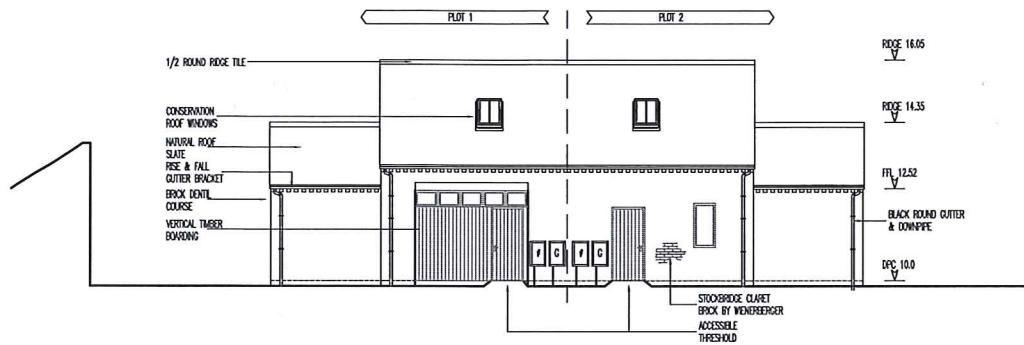
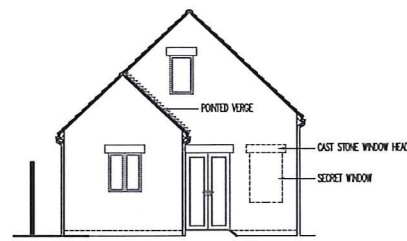


PROPOSED ELEVATIONS

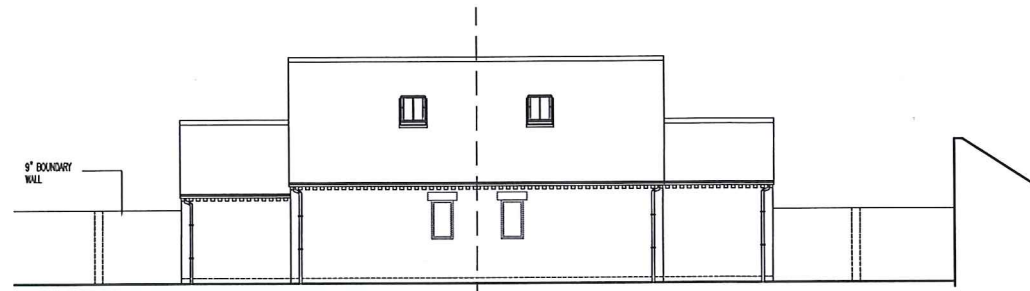
FRONT [WEST]



LHS [NORTH]



REAR [EAST]

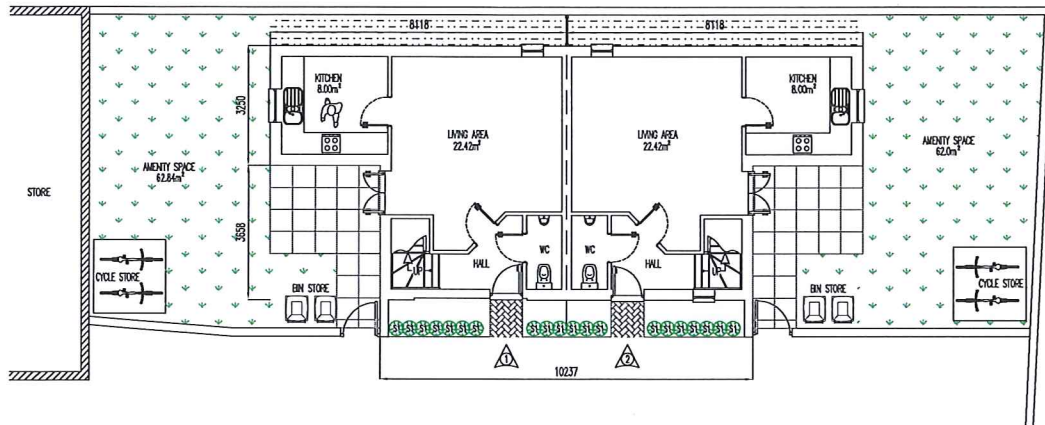


RHS [SOUTH]



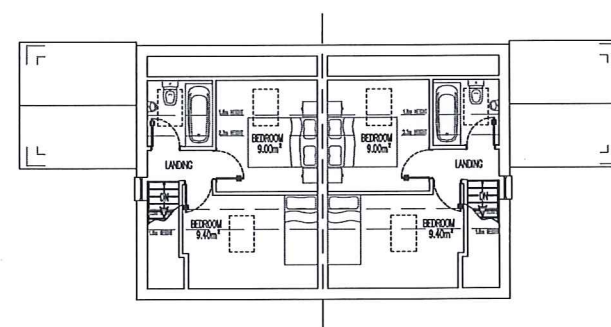
PROPOSED PLANS

GROUND FLOOR



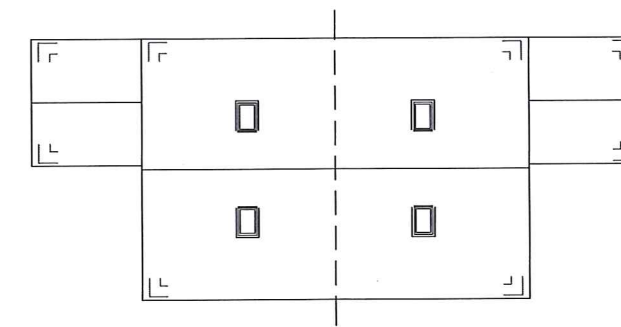
PROPOSED PLANS

FIRST FLOOR



PROPOSED PLANS

ROOF PLAN



EXTERNAL MATERIALS

EXTERNAL WALLS	STOCKBRIDGE CLARET BY WEINERBERGER
MAIN ROOF	NATURAL SPANISH SLATE
SOLID DOORS	TIMBER DOUBLE GLAZED
GLAZED DOORS	TIMBER CASEMENT BY JELDOWEN
WINDOWS	TIMBER CASEMENT BY JELDOWEN
ROOF WINDOWS	VELUX CONSERVATION
BOUNDARY	9" BRICK 1800mm TALL

SITE DATA

SITE AREA	308m²
DEVELOPMENT FOOTPRINT	91.8m²

PLOT ID	PLOT AREA	DWELLING FOOTPRINT	AMENITY SPACE	DIA
PLOT 1	114.0m²	45.87m²	69.90m²	56.36m²
PLOT 2	112.0m²	45.87m²	67.90m²	56.36m²

PART L SPECIAL FEATURES (SAP)

CENTRAL HEATING BOILER	90% EFFICIENT IDEAL LOGIC CODE COMBO BOILER
CENTRAL HEATING CONTROLS	TIME & TEMPERATURE FULL ZONE CONTROL
HEATING DISTRIBUTION	RADIATORS WITH TRV
HOT WATER SUPPLY	FRONT COMBO BOILER-HO STORAGE
RENEWABLES	NONE
LIGHTING	100% LOW ENERGY
AIR TIGHTNESS	4.00 OR BETTER
THERMAL BRIDGING	LABC REGISTERED DETAILS
NEW TECHNOLOGY	NONE

CONTRACTOR MUST INCORPORATE THE ABOVE FEATURES

CONSTRUCTION AREA (COVERED EXTERNAL)

FLOOR	AREA (m²)
GROUND FLOOR	91.74
FIRST FLOOR	70.71
TOTAL	162.45

TOTAL MATERIAL QUANTITIES (FOR PRICING PURPOSES ONLY)

ITEM	UNIT	UNIT
LEVEL REDUCTION	41.30m²	77 tonnes
FOUNDATION EXCAVATION	33.5m²	62.3 tonnes
FOUNDATION CONCRETE	23.5m³	58.0 tonnes
GROUND FLOOR SCREED	4.58m²	11.0 tonnes
CAVITY WALLING **	138m²	
PARTY WALL	25.00m²	
TIMBER CLAD WALLING **	8.00m²	
PITCHED ROOF COVERING	136.0m²	

**NOTE: DEDUCT OPENINGS ADD WASTEAGE

PLANTING SCHEDULE

ID	COMMON NAME	MATURE HEIGHT	PLANTING CENTRES	PLANTING SCHEDULE
S1	BUXUS	1.0m	0.5m	SEPT-NOV

EXTERNAL WORKS KEY

	TEGULA BLOCK PAVING HERRINGBONE (PERMIABLE)
	GREY PATIO SLAB 600x600mm
	GRASS
	20mm GRADE SHINGLE
	ACCESS TO PLOTS
	BIN COLLECTION POINT
	BIN STORAGE POINT
	PROPOSED SHRUB PLANTING (REFER TO KEY)
	PROPOSED TREE PLANTING (REFER TO KEY)

SOIL PREPARATION, PLANTING AND MAINTENANCE

TURFED AREAS:
100mm GRADED TOP SOIL LAID OVER REDUCED LEVELS FOLLOWED BY FISHMEAL POWDER AND CULTIVATED TURF.
BORDERS:
ALL WEEDS TO BE REMOVED PRIOR TO ADDING WELL ROTTED ORGANIC MATTER, LOOSE TOP SOIL AREAS TO BE CORVED IN MULCH/TREE BARK TO RETAIN MOISTURE TO ALLOW ROOTS TO ESTABLISH.

PLANTING METHODOLOGY AND CARE SCHEME:
PRIOR TO PLANTING THE PROPOSED SITE IS TO BE CLEARED OF ALL ROOT GROWTH. ROOT BALLS OF APPROVED PLANTS SPECIES TO BE SOAKED IN A BUCKET OF WATER FOR 60 MINUTES PRIOR TO BEING TRANSFERRED INTO EXCAVATED HOLE. IF CLAY SOIL IS ENCOUNTERED, SCORE THE SIDES OF THE HOLE WITH A TROWEL TO ENCOURAGE ROOT GROWTH. IMMEDIATELY AFTER PLANTING SOAK THE PLANT. COVER THE BED AND BASE OF PLANT WITH MULCH TO RETAIN MOISTURE CONTENT.

WATERING SCHEDULE AFTER PLANTING:
0-2 WEEKS TWICE DAILY
2-12 WEEKS EVERY OTHER DAY
12-52 WEEKS TWICE WEEKLY

AVOID SOAKING THE AREA DURING WATERING. ANY SPECIES THAT DIES OFF OR FAILS TO ESTABLISH TO BE REPLACED.

GENERAL ARRANGEMENTS

FOUNDATION SETTING OUT [1:50]

