



# DUKE STREET



£1,025 PER WEEK  
FURNISHED

**WETHERELL**  
MAYFAIR'S FINEST PROPERTIES

102 Mount Street · London · W1K 2TH  
T: 020 7529 5588 E: [rentals@wetherell.co.uk](mailto:rentals@wetherell.co.uk)  
[wetherell.co.uk](http://wetherell.co.uk)

NO-ONE KNOWS MAYFAIR BETTER THAN WETHERELL





## DUKE STREET



This beautifully presented two double bedroom, two bathroom apartment is situated on the third floor of a period redbrick building, superbly located in Mayfair with views of Grosvenor Square.

LATERAL APARTMENT • TWO DOUBLE BEDROOMS • TWO BATHROOMS & WC •  
GUEST CLOAKROOM • HIGH CEILINGS • EXCELLENT LOCATION

NO-ONE KNOWS MAYFAIR BETTER THAN WETHERELL





## DUKE STREET

This beautifully presented two double bedroom, two bathroom apartment is situated on the third floor of a period redbrick building, superbly located in Mayfair with views of Grosvenor Square.

Accommodation comprises two well-proportioned bedrooms with built-in storage and en suite bathrooms, large reception room with four westerly facing windows, fully fitted kitchen and guest cloakroom.

The apartment is lateral across the third floor of the building and benefits from a lift. It's in excellent condition and further benefits from good ceiling heights and fireplace.

The building is located by Grosvenor Square, close to the shopping facilities on Oxford Street and the open spaces of Hyde Park.

Accommodation:

- \* Lateral Apartment
- \* Two Double Bedrooms
- \* Two Bathrooms & WC
- \* Guest Cloakroom
- \* High Ceilings
- \* Excellent Location

\*Wetherell & Co. (Mayfair) Ltd. is a member of the RICS Client money protection Scheme, and also a member of the NAEA, ARLA Propertymark and the property Ombudsman which are Redress schemes.

Any Tenancy that falls outside of the housing act will be subject to Tenant fees. You can find out more details on the Wetherell website or by contacting us directly.

**£1,025 PER WEEK**  
FURNISHED

Wetherell have no authority to make or give any representations or warranties in relation to the property. These particulars do not form part of any offer or contract and must not be relied upon as statements or representations of fact. Any areas, measurements or distances are approximate. The text, photographs and plans are for guidance only and are not necessarily comprehensive. It should not be assumed that the property has all the necessary planning, building regulation or other consents and Wetherell have not tested any services, equipment or facilities. Purchasers must satisfy themselves by inspection or otherwise. 2021

**WETHERELL**  
MAYFAIR'S FINEST PROPERTIES

102 Mount Street · London · W1K 2TH  
T: 020 7529 5588 E: [rentals@wetherell.co.uk](mailto:rentals@wetherell.co.uk)  
[wetherell.co.uk](http://wetherell.co.uk)

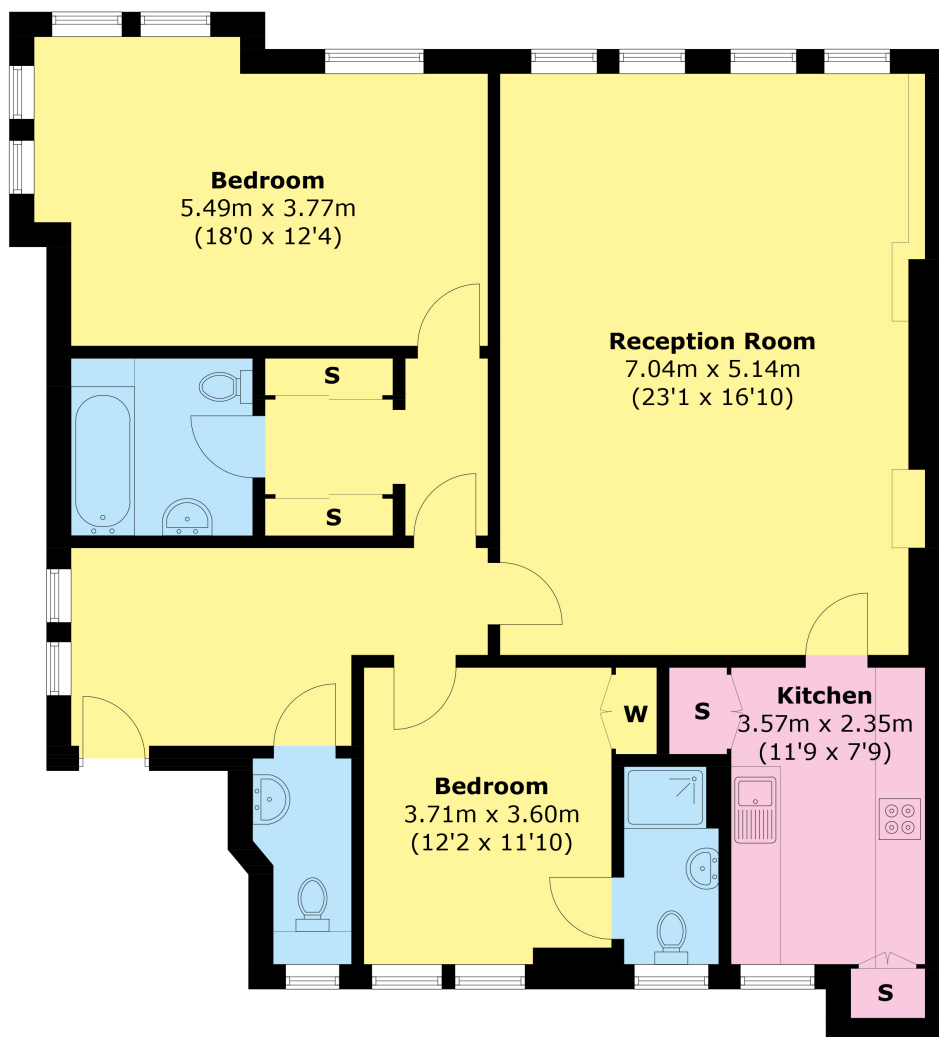
NO-ONE KNOWS MAYFAIR BETTER THAN WETHERELL







DUKE STREET



### Third Floor

Area (approx.): 108.3 sq. m (1,165.7 sq. ft)

Wetherell have no authority to make or give any representations or warranties in relation to the property. These particulars do not form part of any offer or contract and must not be relied upon as statements or representations of fact. Any areas, measurements or distances are approximate. The text, photographs and plans are for guidance only and are not necessarily comprehensive. It should not be assumed that the property has all the necessary planning, building regulation or other consents and Wetherell have not tested any services, equipment or facilities. Purchasers must satisfy themselves by inspection or otherwise. 2021

**WETHERELL**  
MAYFAIR'S FINEST PROPERTIES

102 Mount Street · London · W1K 2TH  
T: 020 7529 5588 E: [rentals@wetherell.co.uk](mailto:rentals@wetherell.co.uk)  
[wetherell.co.uk](http://wetherell.co.uk)

NO-ONE KNOWS MAYFAIR BETTER THAN WETHERELL

