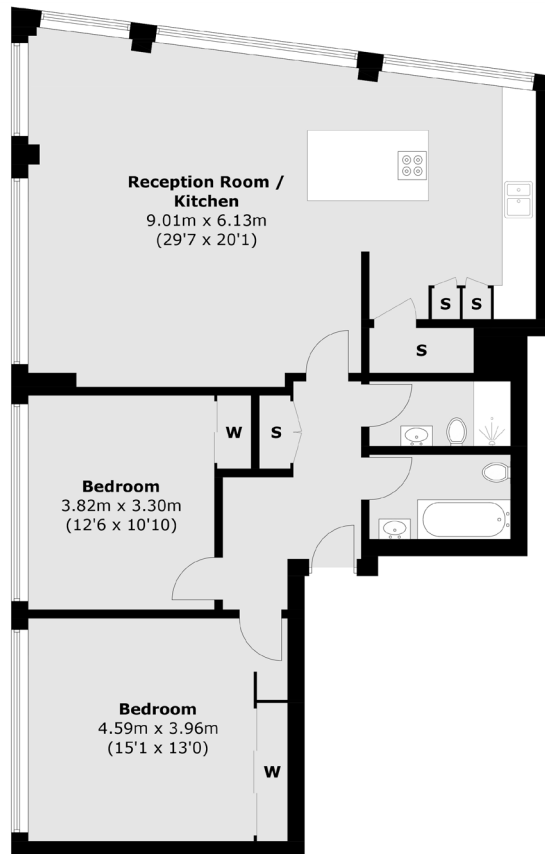




GILBERT STREET MAYFAIR W1K



AN IMMACULATLY PRESENTED TWO BEDROOM APARTMENT ON THE
TOP FLOOR OF THIS MODERN BLOCK OVERLOOKING SELFRIDGES



Fourth Floor

Total area (approx.): 100.2 sq. m (1,078.5 sq. ft)

This 1,078 sq. ft apartment is set on the fourth floor of a development consisting of only four apartments, just moments from Bond Street station. Finished to a high standard throughout, there is a large dual aspect open plan reception room with views over Oxford Street, two bedrooms situated at the rear, two bathrooms and ample storage.

FEATURES

- Two Bedrooms
- Two Bathrooms
- Newly Refurbished
- Open Plan Reception Room
- Lift
- Energy Rating D

Price: £1,950,000

We aim to make our particulars both accurate and reliable. However they are not guaranteed; nor do they form part of an offer or contract. If you require clarification on any points then please contact us, especially if you're traveling some distance to view. Please note that appliances and heating systems have not been tested and therefore no warranties can be given as to their working order.

The property is well located on the corner of Gilbert Street and Oxford Street and 35 minutes from Heathrow via Crossrail. With a multitude of Michelin starred restaurants and some of the finest stores in London on your doorstep, this apartment would be an ideal home, pied-à-terre or rental investment.



WETHERELL
MAYFAIR'S FINEST PROPERTIES

102 Mount Street • London • W1K 2TH
T: 020 7529 5566 E: sales@wetherell.co.uk

wetherell.co.uk

NO ONE KNOWS MAYFAIR BETTER THAN WETHERELL