



HERTFORD STREET



£625 PER WEEK
FURNISHED

WETHERELL
MAYFAIR'S FINEST PROPERTIES

102 Mount Street · London · W1K 2TH
T: 020 7529 5588 E: rentals@wetherell.co.uk
wetherell.co.uk

NO-ONE KNOWS MAYFAIR BETTER THAN WETHERELL





HERTFORD STREET



A one bedroom apartment inclusive of all bills including SKY TV & Wifi services, located within a well maintained portered building in the heart of Mayfair.

SPACIOUS DOUBLE BEDROOM • SEPARATE KITCHEN • HIGH CEILINGS • DAY
PORTER • FURNISHED • EXCELLENT LOCATION

NO-ONE KNOWS MAYFAIR BETTER THAN WETHERELL





HERTFORD STREET

A one bedroom apartment inclusive of all bills including SKY TV & Wifi services, located within a well maintained portered building in the heart of Mayfair.

Located in the heart of Mayfair this property is situated close to the green spaces of Hyde Park, Green Park and the world famous eating and shopping facilities of Mayfair.

Accommodation:

- * Spacious Double Bedroom
- * Separate Kitchen
- * High Ceilings
- * Day Porter
- * Furnished
- * Excellent Location

*Wetherell & Co. (Mayfair) Ltd. is a member of the RICS Client money protection Scheme, and also a member of the NAEA, ARLA Propertymark and the property Ombudsman which are Redress schemes.

Any Tenancy that falls outside of the housing act will be subject to Tenant fees. You can find out more details on the Wetherell website or by contacting us directly.

£625 PER WEEK
FURNISHED

Wetherell have no authority to make or give any representations or warranties in relation to the property. These particulars do not form part of any offer or contract and must not be relied upon as statements or representations of fact. Any areas, measurements or distances are approximate. The text, photographs and plans are for guidance only and are not necessarily comprehensive. It should not be assumed that the property has all the necessary planning, building regulation or other consents and Wetherell have not tested any services, equipment or facilities. Purchasers must satisfy themselves by inspection or otherwise. 2021

WETHERELL
MAYFAIR'S FINEST PROPERTIES

102 Mount Street · London · W1K 2TH
T: 020 7529 5588 E: rentals@wetherell.co.uk
wetherell.co.uk

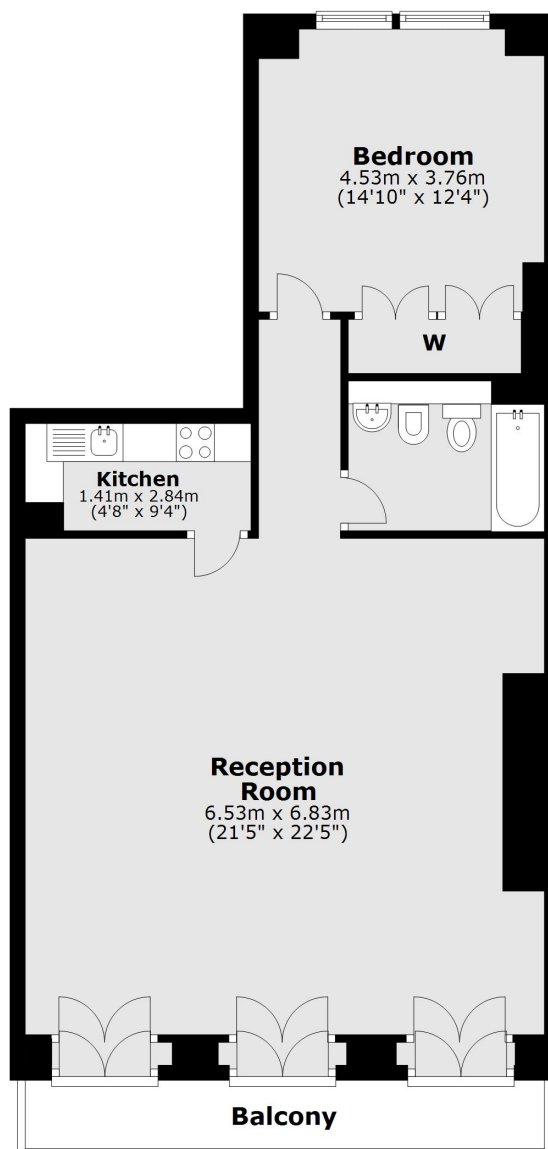
NO-ONE KNOWS MAYFAIR BETTER THAN WETHERELL





HERTFORD STREET

First Floor



Main area: Approx. 77.0 sq. metres (828.5 sq. feet)
Plus balconies, approx. 6.8 sq. metres (73.5 sq. feet)

Wetherell have no authority to make or give any representations or warranties in relation to the property. These particulars do not form part of any offer or contract and must not be relied upon as statements or representations of fact. Any areas, measurements or distances are approximate. The text, photographs and plans are for guidance only and are not necessarily comprehensive. It should not be assumed that the property has all the necessary planning, building regulation or other consents and Wetherell have not tested any services, equipment or facilities. Purchasers must satisfy themselves by inspection or otherwise. 2021

WETHERELL
MAYFAIR'S FINEST PROPERTIES

102 Mount Street · London · W1K 2TH
T: 020 7529 5588 E: rentals@wetherell.co.uk
wetherell.co.uk

NO-ONE KNOWS MAYFAIR BETTER THAN WETHERELL

