



DAVIES STREET

MAYFAIR W1



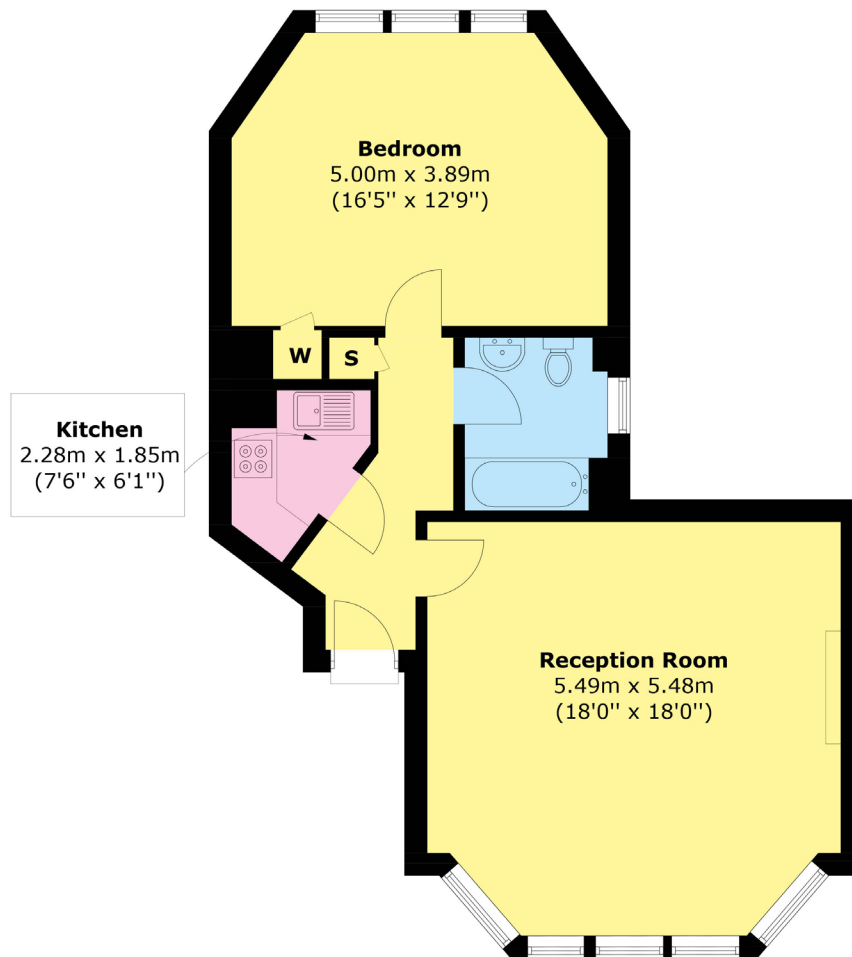
A LARGE ONE BEDROOM APARTMENT OF 668 SQ FT WITH HIGH CEILINGS AND AN IMPRESSIVE RECEPTION ROOM OVERLOOKING CLARIDGE'S.

Upon instructions of


GROSVENOR

Approximate Gross Internal Area
668.8 Square Feet (62.1 Square Metres)

Floorplans are for identification and guideline purposes only. Not to scale



SECOND FLOOR



One of Mayfair's finest one bedroom apartments. Ideal as a pied-à-terre, 35 minutes from Heathrow via Crossrail and walking distance to a multitude of Michelin starred restaurants and some of the finest stores in London. Situated on the second floor (with lift) in Brook Street Mansions, the large reception room has five sash windows with views of the art deco masterpiece that is Claridge's. At the rear of the apartment is the bright, well-proportioned bedroom which has west facing views over Three Kings Yard.

Brook Street Mansions is an attractive red brick building located on Davies Street (named after Mary Davies, the heiress who by her marriage to Sir Thomas Grosvenor in 1677 brought the London estate into the Grosvenor family) which is in the heart of Mayfair, only a short walk from Grosvenor Square and Berkeley Square. Offered on a long lease.

ACCOMMODATION

- One Bedroom
- Reception Room
- 668 Sq. Ft
- High Ceilings
- Lift
- Mayfair Village

TERMS

Lease Leasehold: 125 years

Price: £1,000,000

Sole Agent



102 Mount Street · London · W1K 2TH
T: 020 7529 5566 E: sales@wetherell.co.uk
wetherell.co.uk

Wetherell have no authority to make or give any representations or warranties in relation to the property. These particulars do not form part of any offer or contract and must not be relied upon as statements or representations of fact. Any areas, measurements or distances are approximate. The text, photographs and plans are for guidance only and are not necessarily comprehensive. It should not be assumed that the property has all the necessary planning, building regulation or other consents and Wetherell have not tested any services, equipment or facilities. Purchasers must satisfy themselves by inspection or otherwise. Energy Efficiency Rating: Band F.

NO-ONE KNOWS MAYFAIR BETTER THAN WETHERELL