



NORTH AUDLEY STREET



£2,380,000

WETHERELL
MAYFAIR'S FINEST PROPERTIES

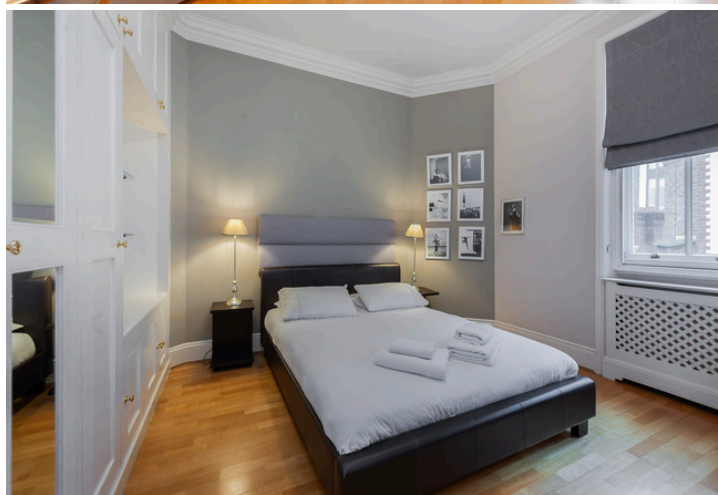
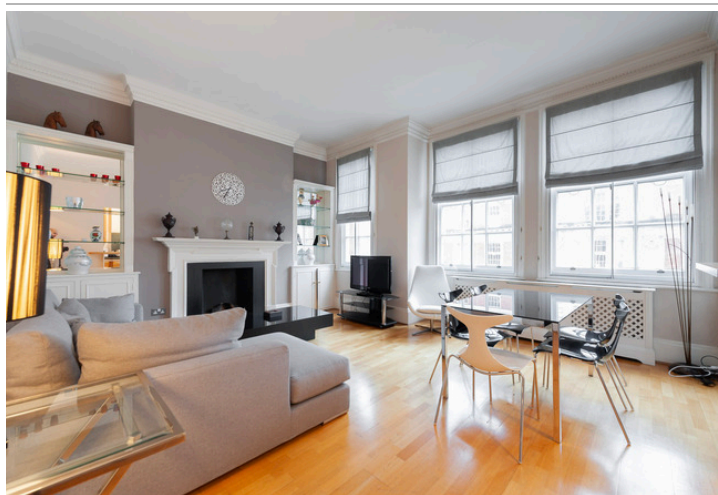
102 Mount Street · London · W1K 2TH
T: 020 7529 5566 E: sales@wetherell.co.uk
wetherell.co.uk

NO-ONE KNOWS MAYFAIR BETTER THAN WETHERELL





NORTH AUDLEY STREET



A well-presented lateral apartment in a prime Mayfair location just moments from Grosvenor Square and Oxford Street.

FLAT • 2 BEDROOMS • 1 RECEPTION ROOM

NO-ONE KNOWS MAYFAIR BETTER THAN WETHERELL





NORTH AUDLEY STREET

A well-presented lateral apartment in a prime Mayfair location just moments from Grosvenor Square and Oxford Street.

This apartment is in excess of 1,000 sq. Ft featuring a large reception room with a combined dining area, two bedrooms which are both en suite and a separate WC.

The property has lift access, ceilings are over 3 metres high throughout allowing an abundance of natural light to fill each room and comes with a share of the freehold.

North Audley Street is mainly made up of late nineteenth and twentieth century buildings including a splendid eighteenth-century house with stucco exterior and a church of considerable distinction.

The apartment is located close to all the outstanding amenities Mayfair has to offer and is a short stroll to Oxford Street, Bond Street and Hyde Park.

Accommodation:

- * Two Bedrooms
- * Two En Suite Bathrooms
- * Prime Mayfair Location
- * High Ceilings
- * Lift
- * Share of Freehold

Terms:

Lease Leasehold: Share of freehold
Service Charge: Approx £4,000 pa
Ground Rent: Nil

£2,380,000

Wetherell have no authority to make or give any representations or warranties in relation to the property. These particulars do not form part of any offer or contract and must not be relied upon as statements or representations of fact. Any areas, measurements or distances are approximate. The text, photographs and plans are for guidance only and are not necessarily comprehensive. It should not be assumed that the property has all the necessary planning, building regulation or other consents and Wetherell have not tested any services, equipment or facilities. Purchasers must satisfy themselves by inspection or otherwise. 2021

WETHERELL
MAYFAIR'S FINEST PROPERTIES

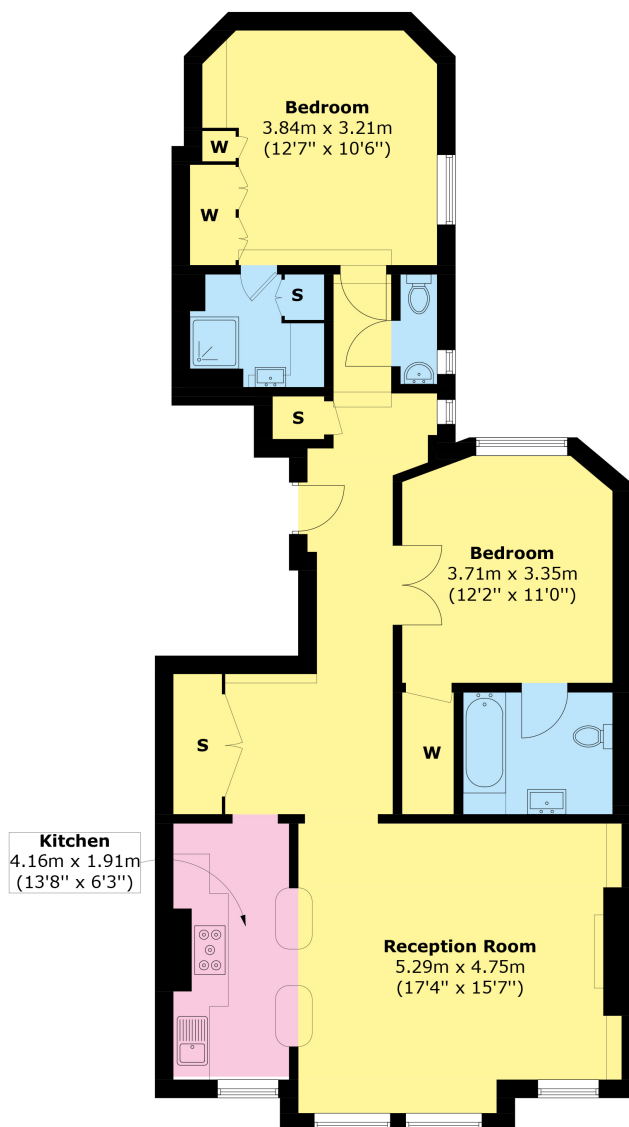
102 Mount Street · London · W1K 2TH
T: 020 7529 5566 E: sales@wetherell.co.uk
wetherell.co.uk

NO-ONE KNOWS MAYFAIR BETTER THAN WETHERELL





NORTH AUDLEY STREET



Third Floor

Area (approx.): 93.6 sq. m (1,007.5 sq. ft)

Wetherell have no authority to make or give any representations or warranties in relation to the property. These particulars do not form part of any offer or contract and must not be relied upon as statements or representations of fact. Any areas, measurements or distances are approximate. The text, photographs and plans are for guidance only and are not necessarily comprehensive. It should not be assumed that the property has all the necessary planning, building regulation or other consents and Wetherell have not tested any services, equipment or facilities. Purchasers must satisfy themselves by inspection or otherwise. 2021

WETHERELL
MAYFAIR'S FINEST PROPERTIES

102 Mount Street · London · W1K 2TH
T: 020 7529 5566 E: sales@wetherell.co.uk
wetherell.co.uk

NO-ONE KNOWS MAYFAIR BETTER THAN WETHERELL

