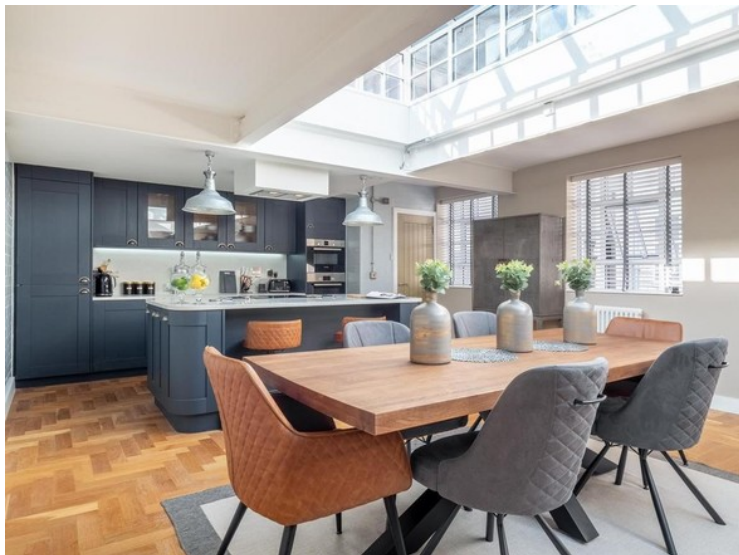


Great Charles Street Queensway, City Centre, B3
£3,750 per month, For long let



Greystone Lettings are pleased to offer this simply beautiful and stunning top floor Penthouse in One Five One Queensway which was a conversion of a historic building originally built in 1930 and now offering 11 spacious apartments.





Greystone Lettings give notice to anyone reading these particulars that: (i) these particulars do not constitute part of an offer or contract; (ii) these particulars and any pictures or plans represent the opinion of the author and are given in good faith for guidance only and must not be construed as statements of fact; (iii) nothing in the particulars shall be deemed a statement that the property is in good condition otherwise; we have not carried out a structural survey of the property and have not tested the services, appliances or specified fittings.

Long Description

Located on Great Charles Street, this Penthouse offers plenty of space throughout and spread across 1710 Sq ft.

Complete with its own private lift code access to the top floor and with a secure gated entrance.

Offering a spacious long hallway with plenty of windows with natural light throughout and leading on to a beautiful and well designed lounge area complete with parquet flooring, stunning glass ceiling window feature.

A perfect room for entertaining guests. TV with Sky Q, furnished to a very high standard and making it an ideal living area to relax.

Fully fitted luxury kitchen complete with soft closing doors finished in charcoal. Quartz work tops and an Island with a built on ceramic hob. All integrated AEG, BOSCH appliances to include a fridge freezer, dishwasher, ovens.

The apartment comes with 3 well proportioned bedrooms and all furnished to a high standard with built in wardrobes, luxury fitted carpets and modern lighting throughout. Each room is complete with its own en-suite finished off in a Savoy range, Bianco Venato wall and floor tiles, spacious shower cubicle with contemporary luxury shower fittings.

This lovely apartment also comes with its own cinema room, and ideal space to sit and relax and enjoy your favourite movies.

Offering an outdoor terrace which equals to 1205 Sq Ft and having some of the most amazing views across the City.

This is simply a treasure in the heart of Birmingham City Centre and an ideal home for any City Executive or young Family.

Located within 7 minutes walk to Grand Central and the heart of Birmingham's thriving shopping centre.

2 Tandem secure parking bays

Video Entry System

External CCTV