



SOUTH MOLTON STREET



£995 PER WEEK
FURNISHED

WETHERELL
MAYFAIR'S FINEST PROPERTIES

102 Mount Street · London · W1K 2TH
T: 020 7529 5588 E: rentals@wetherell.co.uk
wetherell.co.uk

NO-ONE KNOWS MAYFAIR BETTER THAN WETHERELL





SOUTH MOLTON STREET



A recently refurbished two double bedroom apartment on the second floor of this period building with open plan reception room and south facing views.

NEWLY REFURBISHED • TWO DOUBLE BEDROOMS • WOOD FLOORING • SECOND FLOOR • SOUTH WEST FACING • PERIOD BUILDING

NO-ONE KNOWS MAYFAIR BETTER THAN WETHERELL





SOUTH MOLTON STREET

A recently refurbished two double bedroom apartment on the second floor of this period building with open plan reception room and south facing views.

Entering the property from the second floor you are greeted by a large reception room with open plan kitchen with wood flooring throughout and plenty of space for an additional dining area.

The reception room leads to a main bedroom suite with wall to wall wardrobe storage and en suite bathroom. The second double bedroom is also furnished with ample storage space. A shower room accessible via the hallway services bedroom two.

This apartment is perfect for a couple that require a second guest bedroom or for two professional sharers as both bedrooms are a very good size.

Accommodation:

- * Newly Refurbished
- * Two Double Bedrooms
- * Wood Flooring
- * Second Floor
- * South West Facing
- * Period Building

*Wetherell & Co. (Mayfair) Ltd. is a member of the RICS Client money protection Scheme, and also a member of the NAEA, ARLA Propertymark and the property Ombudsman which are Redress schemes.

Any Tenancy that falls outside of the housing act will be subject to Tenant fees. You can find out more details on the Wetherell website or by contacting us directly.

£995 PER WEEK
FURNISHED

Wetherell have no authority to make or give any representations or warranties in relation to the property. These particulars do not form part of any offer or contract and must not be relied upon as statements or representations of fact. Any areas, measurements or distances are approximate. The text, photographs and plans are for guidance only and are not necessarily comprehensive. It should not be assumed that the property has all the necessary planning, building regulation or other consents and Wetherell have not tested any services, equipment or facilities. Purchasers must satisfy themselves by inspection or otherwise. 2020

WETHERELL
MAYFAIR'S FINEST PROPERTIES

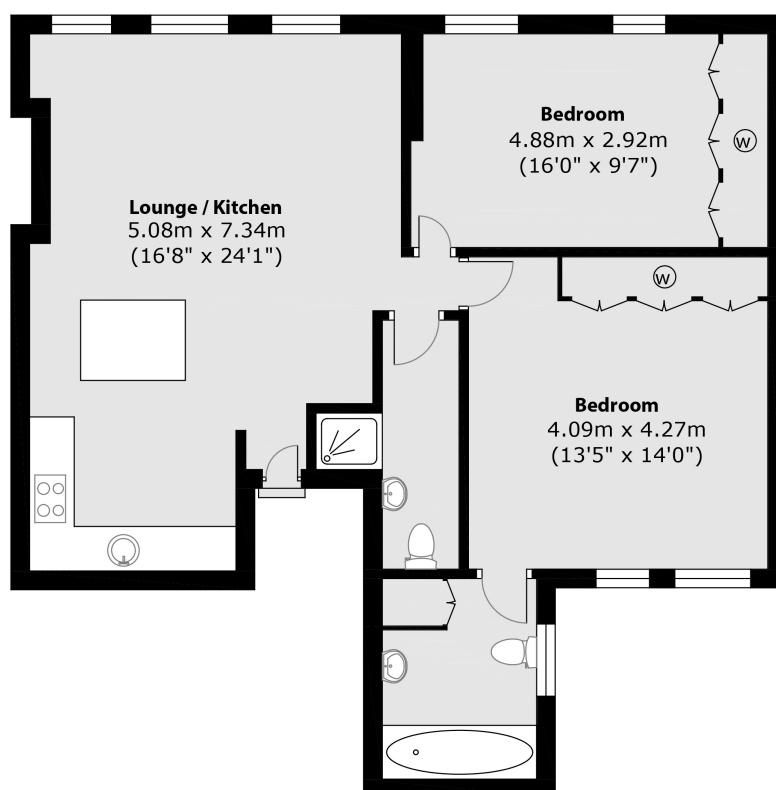
102 Mount Street · London · W1K 2TH
T: 020 7529 5588 E: rentals@wetherell.co.uk
wetherell.co.uk

NO-ONE KNOWS MAYFAIR BETTER THAN WETHERELL





SOUTH MOLTON STREET



Main area: Approx. 76.6 sq. meters (824.7 sq. feet)

Wetherell have no authority to make or give any representations or warranties in relation to the property. These particulars do not form part of any offer or contract and must not be relied upon as statements or representations of fact. Any areas, measurements or distances are approximate. The text, photographs and plans are for guidance only and are not necessarily comprehensive. It should not be assumed that the property has all the necessary planning, building regulation or other consents and Wetherell have not tested any services, equipment or facilities. Purchasers must satisfy themselves by inspection or otherwise. 2020

WETHERELL
MAYFAIR'S FINEST PROPERTIES

102 Mount Street · London · W1K 2TH
T: 020 7529 5588 E: rentals@wetherell.co.uk
wetherell.co.uk

NO-ONE KNOWS MAYFAIR BETTER THAN WETHERELL

