

Heathfield Road

Ayr, KA8

Offers over £200,000



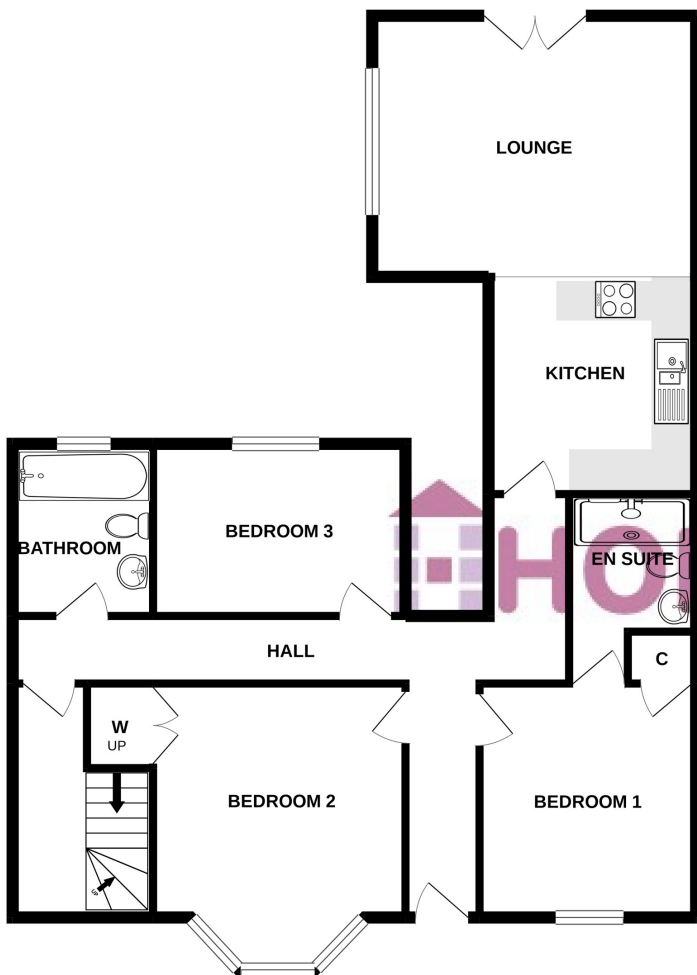
Well presented 4 bedroom bungalow in a popular location in Ayr. Comprising kitchen/diner/sitting room, 4 double bedrooms, en-suite and bathroom. With off-street parking and a large, enclosed rear garden. In move-in condition. Early viewings advised.



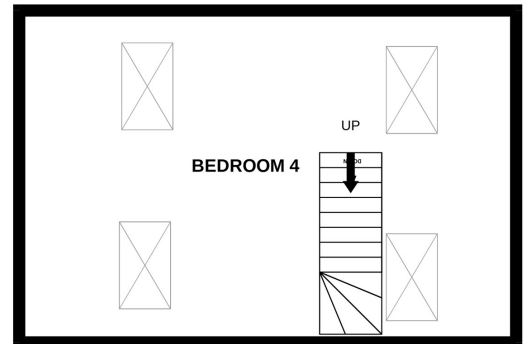
HOPPERS | 8 MAIN STREET | PRESTWICK | KA9 1NX
Tel: 01292477788
E-mail: hopperleads@aol.com



GROUND FLOOR

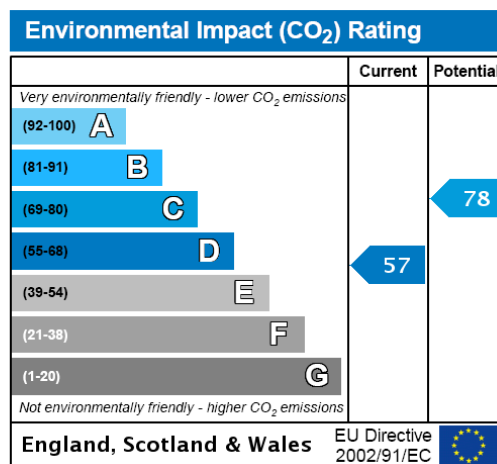
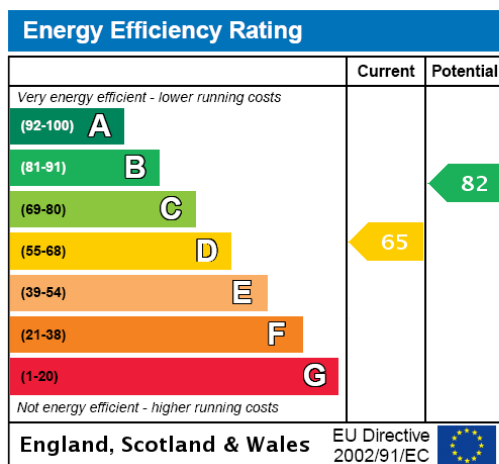


1ST FLOOR



Whilst every attempt has been made to ensure the accuracy of the floorplan contained here, measurements of doors, windows, rooms and any other items are approximate and no responsibility is taken for any error, omission or mis-statement. This plan is for illustrative purposes only and should be used as such by any prospective purchaser. The services, systems and appliances shown have not been tested and no guarantee as to their operability or efficiency can be given.
Made with Metropix ©2021

These particulars do not form part of any offer or contract and must not be relied upon as statements or representations of fact. Any areas, measurements or distances are approximate. The text, photographs and plans are for guidance only and are not necessarily comprehensive. It should not be assumed that the property has all the necessary planning, building regulation or other consents and we have not tested services, equipment or facilities. Purchasers must satisfy themselves by inspection or otherwise.



67 Heathfield Road, Ayr, KA8 9DU

Hoppers Estate Agency is delighted to market this impressive 4 bedroom property in Ayr. This well-presented home comprises a spacious kitchen diner with a sitting room, 4 bedrooms, one with an en-suite, and a bathroom. The layout is flexible and the outdoor space is generous, with off-street parking and a very huge rear garden. With GCH and double glazing throughout. Viewing early to appreciate this lovely family home. Heathfield Road is a popular location, ideally placed for access into Ayr Town Centre, Heathfield Retail Park, and Prestwick Town, as well as surrounding town and villages. There is quick and easy access into Glasgow from Prestwick Road, or from Newton-On-Ayr Train Station which is only a short drive away. There are good local schools nearby, as well as parks and recreational spaces.

The property itself is immaculately presented and in true move-in condition. With neutral decor throughout, it is a blank canvas for buyers to make their own.

In summary, the spacious layout extends to: Entrance hall leading to a long corridor with 2 front-facing bedrooms, one with a modern en-suite shower room and one currently in use as a lounge. At the rear of the property is the bright and spacious kitchen diner with a sitting room; an excellent space for relaxing as a family or entertaining guests. The modern kitchen provides ample storage and worktop space as well as integrated appliances, and the room is big enough for both a family dining table and seating area. From here, the French doors open to the large rear garden. There is another double bedroom on the ground floor, as well as a modern bathroom; both rear-facing.

Stairs lead to the upper floor; a large bedroom brightened by Velux windows; currently in use as an office space, but a perfect large master bedroom.

Externally the property is completely low maintenance. The front has a monoblock driveway for multiple cars; while the large rear garden is a combination of decking, paving and chipping stones. The rear is fully enclosed; an ideal space for families with children and/or pets, and the vast space allows for excellent development or landscaping potential.

DIMENSIONS

Kitchen Diner/Sitting Room: 15'8 (in dining area) narrowing to 10'1 in kitchen x 24'0 approx.

Bedroom 1: 12'2x14'5 approx.

Bedroom 2: 10'6x11'4 approx.

En-Suite Shower Room: 5'6x9'2 approx.

Bedroom 3: 12'1x8'4 approx.

Bathroom: 6'3x8'0 approx.

HOPPERS | 8 MAIN STREET | PRESTWICK | KA9 1NX

Tel: 01292477788

E-mail: hopperleads@aol.com



Bedroom 4: 24'1x16'2 approx.

VIEWINGS

Strictly by appointment through Hoppers Estate Agents. Tel 01292 477788.

These particulars do not form part of any offer or contract and must not be relied upon as statements or representations of fact. Any areas, measurements or distances are approximate. The text, photographs and plans are for guidance only and are not necessarily comprehensive. It should not be assumed that the property has all the necessary planning, building regulation or other consents and we have not tested services, equipment or facilities. Purchasers must satisfy themselves by inspection or otherwise.