

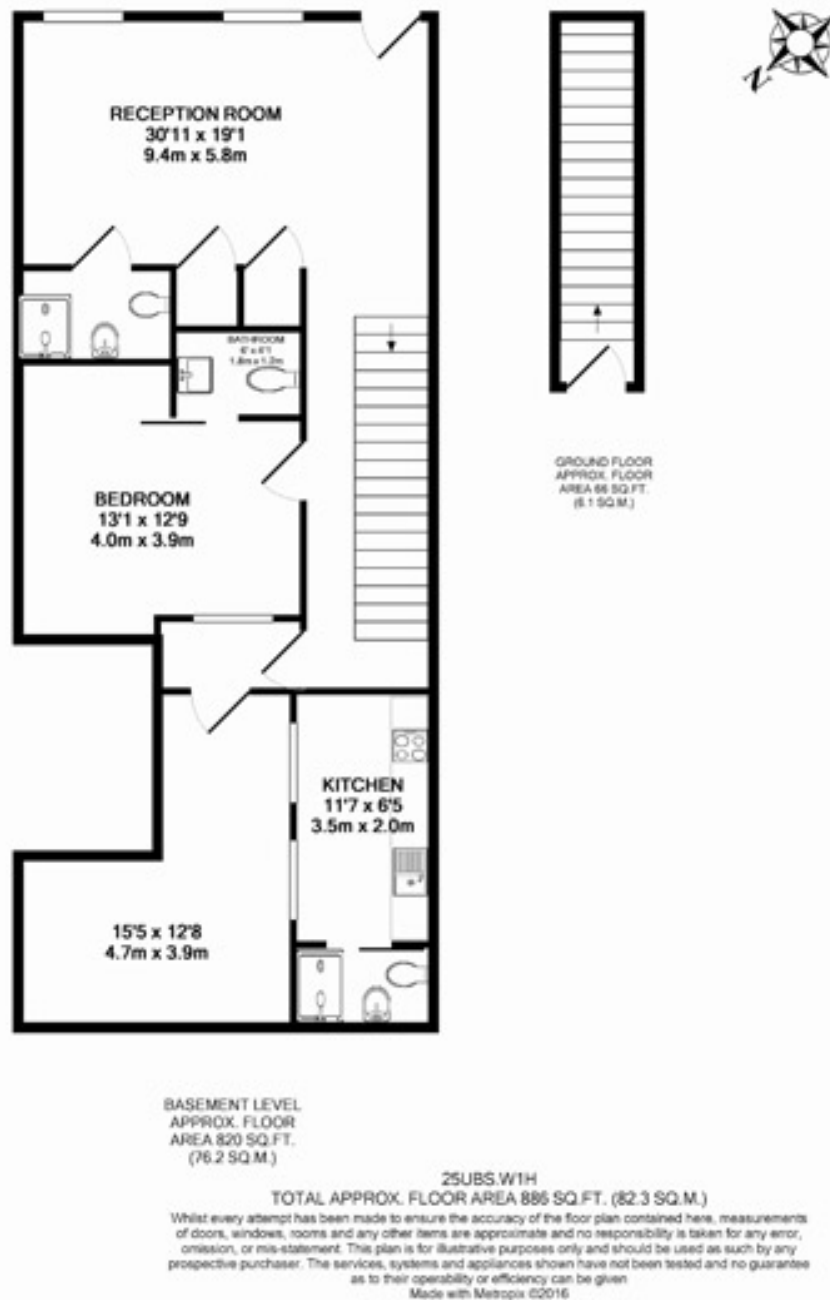
Upper Berkeley Street, W1H £2,817 per month, For long let



Situated in the heart of the West End, this furnished two bedroom apartment in Upper Berkeley Street, W1 is in a convenient location for a plethora of shops, cafes and theatres.







Dreamview Estates give notice to anyone reading these particulars that: (i) these particulars do not constitute part of an offer or contract; (ii) these particulars and any pictures or plans represent the opinion of the author and are given in good faith for guidance only and must not be construed as statements of fact; (iii) nothing in the particulars shall be deemed a statement that the property is in good condition otherwise; we have not carried out a structural survey of the property and have not tested the services, appliances or specified fittings.

Long Description

Situated in the heart of the West End, this furnished two bedroom apartment in Upper Berkeley Street, W1 is in a convenient location for a plethora of shops, cafes and theatres. The open spaces of Hyde Park are nearby while Marble Arch Underground station is just a four minute stroll away. Each apartment has been interior designed to maximise use of space and light, with neutral decor and contemporary furnishings, complementing the property's elegant period features. It also has a lovely internal patio. The apartment has hard wood floors, a sleek Italian kitchen with integrated appliances and granite worktops and two smart white bathrooms (shower only) with power shower and chrome/glass finishes. There is CCTV security and a video entry system and free WiFi. This flat is on the lower ground floor.