



BOURDON STREET



£845 PER WEEK
FURNISHED

WETHERELL
MAYFAIR'S FINEST PROPERTIES

102 Mount Street · London · W1K 2TH
T: 020 7529 5588 E: rentals@wetherell.co.uk
wetherell.co.uk

NO-ONE KNOWS MAYFAIR BETTER THAN WETHERELL





BOURDON STREET



This well proportioned two bedroom, two bathroom apartment is located in a secure development moments from New Bond Street and Berkeley Square.

TWO DOUBLE BEDROOMS • TWO BATHROOMS • WOODEN FLOORING • LIFT ACCESS • MODERN KITCHEN • SECURE DEVELOPMENT

NO-ONE KNOWS MAYFAIR BETTER THAN WETHERELL





BOURDON STREET

This well proportioned two bedroom, two bathroom apartment is located in a secure development moments from New Bond Street and Berkeley Square. This flat has two double bedrooms, a separate kitchen, a large reception/dining room and wooden floors throughout.

Located off Berkeley Square in the heart of Mayfair, Bloomfield Court is very close to Regent Street, Bond Street and Green Park.

Accommodation:

- * Two Double Bedrooms
- * Two Bathrooms
- * Wooden Flooring
- * Lift Access
- * Modern Kitchen
- * Secure Development

*Wetherell & Co. (Mayfair) Ltd. is a member of the RICS Client money protection Scheme, and also a member of the NAEA, ARLA Propertymark and the property Ombudsman which are Redress schemes.

Any Tenancy that falls outside of the housing act will be subject to Tenant fees. You can find out more details on the Wetherell website or by contacting us directly.

£845 PER WEEK
FURNISHED

Wetherell have no authority to make or give any representations or warranties in relation to the property. These particulars do not form part of any offer or contract and must not be relied upon as statements or representations of fact. Any areas, measurements or distances are approximate. The text, photographs and plans are for guidance only and are not necessarily comprehensive. It should not be assumed that the property has all the necessary planning, building regulation or other consents and Wetherell have not tested any services, equipment or facilities. Purchasers must satisfy themselves by inspection or otherwise. 2021

WETHERELL
MAYFAIR'S FINEST PROPERTIES

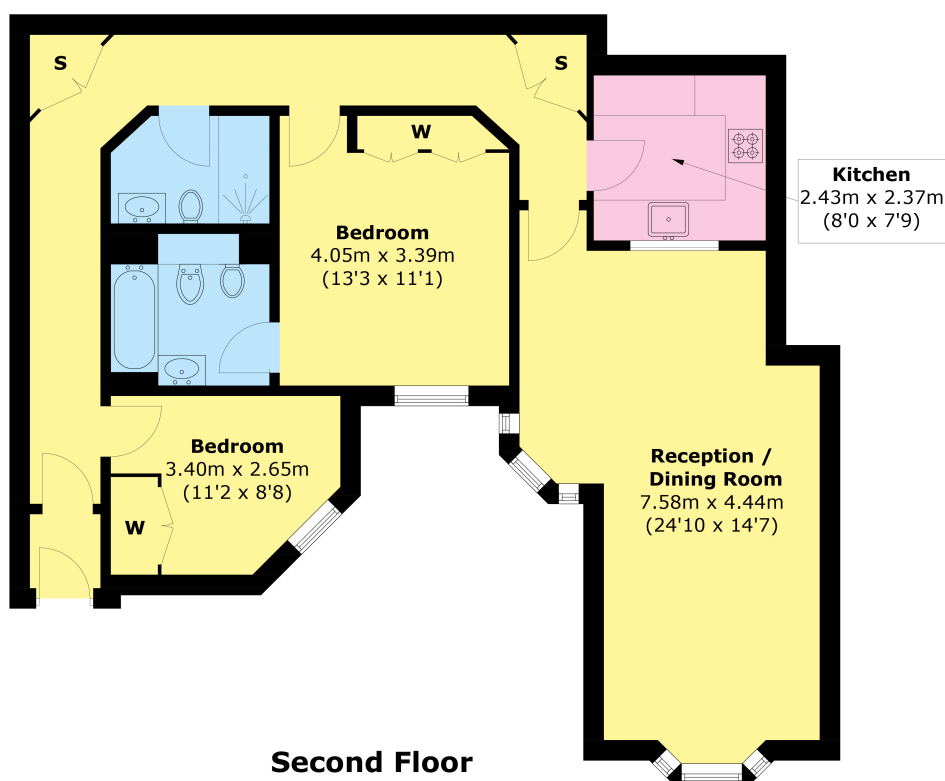
102 Mount Street · London · W1K 2TH
T: 020 7529 5588 E: rentals@wetherell.co.uk
wetherell.co.uk

NO-ONE KNOWS MAYFAIR BETTER THAN WETHERELL





BOURDON STREET



Total area (approx.): 86.6 sq. m (932.1 sq. ft)

Wetherell have no authority to make or give any representations or warranties in relation to the property. These particulars do not form part of any offer or contract and must not be relied upon as statements or representations of fact. Any areas, measurements or distances are approximate. The text, photographs and plans are for guidance only and are not necessarily comprehensive. It should not be assumed that the property has all the necessary planning, building regulation or other consents and Wetherell have not tested any services, equipment or facilities. Purchasers must satisfy themselves by inspection or otherwise. 2021

WETHERELL
MAYFAIR'S FINEST PROPERTIES

102 Mount Street · London · W1K 2TH
T: 020 7529 5588 E: rentals@wetherell.co.uk
wetherell.co.uk

NO-ONE KNOWS MAYFAIR BETTER THAN WETHERELL

