

BEECHCROFT AVENUE, GOLDERS GREEN, NW11 £2,773 per month, For long let

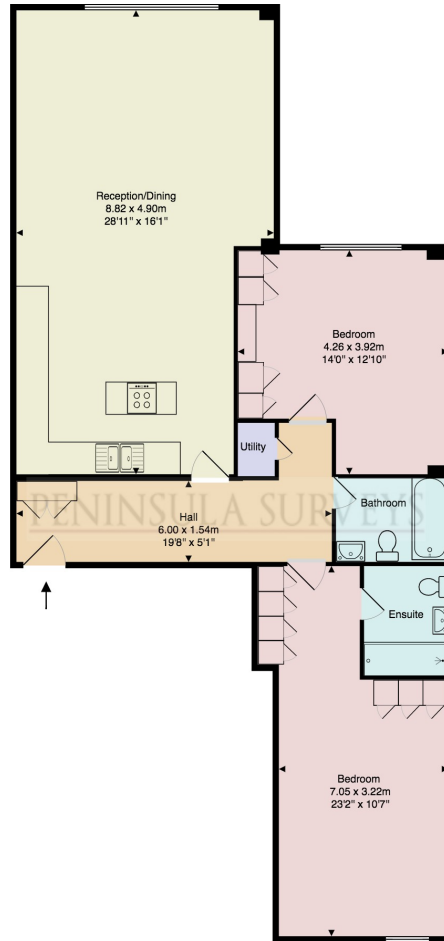


A stunning two double bedroom, two bathroom (one en-suite) apartment located on this popular residential road a short walk from Golders Green tube station.





Flat 7 Beechcroft Avenue



First Floor

Gross Internal Area: 94.2 m² ... 1014 ft²

Dimensions are approximate for display purposes only.
Created in accordance with the RICS Code of Measuring Practice.
(c) Peninsula Surveys Ltd.

PENINSULA SURVEYS

Dreamview Estates give notice to anyone reading these particulars that: (i) these particulars do not constitute part of an offer or contract; (ii) these particulars and any pictures or plans represent the opinion of the author and are given in good faith for guidance only and must not be construed as statements of fact; (iii) nothing in the particulars shall be deemed a statement that the property is in good condition otherwise; we have not carried out a structural survey of the property and have not tested the services, appliances or specified fittings.

Long Description

A stunning two double bedroom, two bathroom (one en-suite) apartment located on this popular residential road a short walk from Golders Green tube station.

The property benefits from allocated underground parking, a private patio, high ceilings, modern kitchen with integrated appliances, fitted wardrobes to both double bedrooms and double glazing.