



UPPER GROSVENOR STREET MAYFAIR

AN IMPRESSIVE FOUR BEDROOM APARTMENT WITH 18TH CENTURY
PERIOD FEATURES AND HIGH CEILINGS.



The property benefits from a lift and has been designed to create a stunning entertaining space and includes an integrated security and sound system as well air-conditioning throughout.

The apartment boasts four meter ceiling heights on the ground floor, a double reception room with working gas fireplace and a modern fully fitted kitchen with connecting dining room. There is also a study and guest cloakroom.

On the lower ground floor, there is a stunning main bedroom with direct access to the main patio, large walk-in wardrobe and stunning principle suite. There are three further bedrooms and three bathrooms as well as a smaller patio.

Situated off of Grosvenor Square, this apartment is conveniently located for the open spaces of Hyde Park. Nearby underground stations include Bond Street, Marble Arch and Hyde Park.

FEATURES

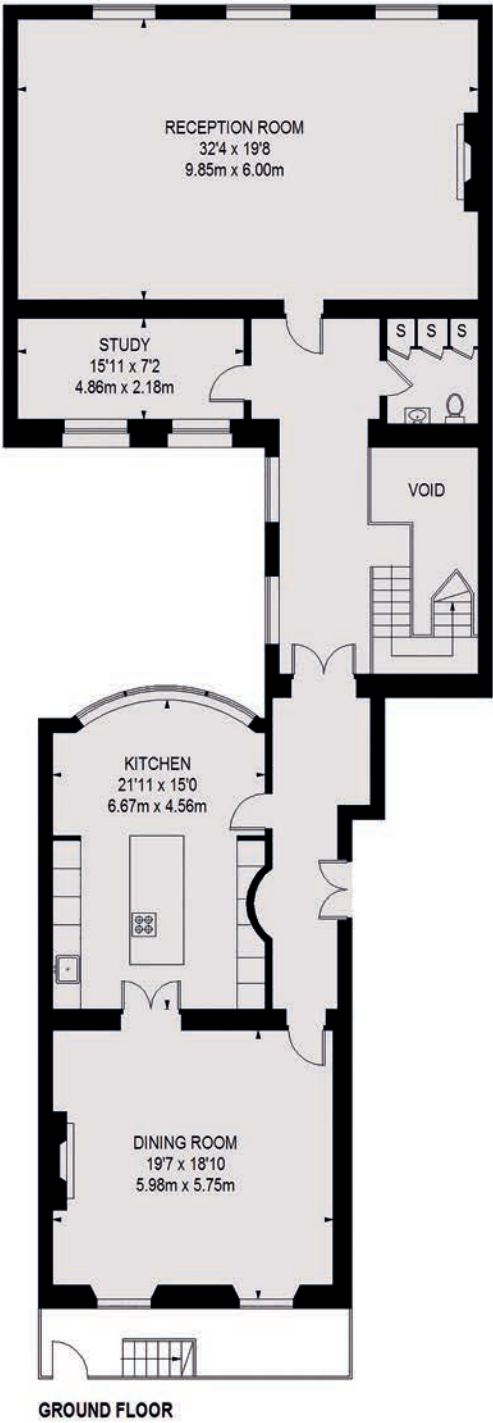
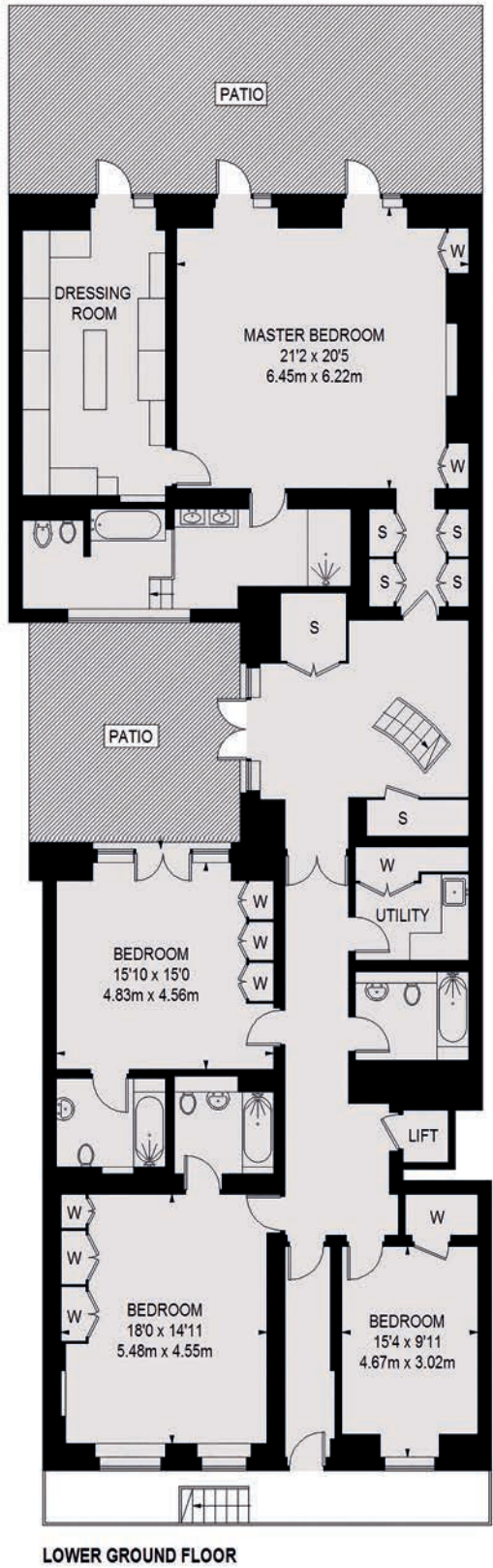
- Four Bedrooms
- Five Bathrooms
- Split-Level
- Guest Cloakroom
- John Cullen Lighting
- Integrated Sound System
- Air-Conditioning
- Private Patio







UPPER GROSVENOR STREET, MAYFAIR LONDON, W1K



TOTAL APPROX. FLOOR AREA 4,291 SQ. FT (398.65 SQ. M)
Energy Rating: D. We aim to make our particulars both accurate and reliable. However they are not guaranteed; nor do they form part of an offer or contract. If you require clarification on any points then please contact us, especially if you're traveling some distance to view. Please note that appliances and heating systems have not been tested and therefore no warranties can be given as to their good working order.



WETHERELL
MAYFAIR'S FINEST PROPERTIES

102 Mount Street,
London, W1K 2TH
020 7493 6935
wetherell.co.uk

SALES • DEVELOPMENTS • PROPERTY MANAGEMENT • LETTINGS

No-one knows Mayfair better than Wetherell

