



BLACKBURNES MEWS



£650 PER WEEK
FURNISHED

WETHERELL
MAYFAIR'S FINEST PROPERTIES

102 Mount Street · London · W1K 2TH
T: 020 7529 5588 E: rentals@wetherell.co.uk
wetherell.co.uk

NO-ONE KNOWS MAYFAIR BETTER THAN WETHERELL





BLACKBURNES MEWS



A two double bedroom apartment on the first floor of a secure gated mews development to the west of Grosvenor Square. There is a reception room with large french windows and small balcony.

TWO DOUBLE BEDROOMS • TWO BATHROOMS • FIRST FLOOR • FRENCH
WINDOWS • LIFT • 24-HOUR SECURITY

NO-ONE KNOWS MAYFAIR BETTER THAN WETHERELL





BLACKBURNES MEWS

A two double bedroom apartment on the first floor of a secure gated mews development to the west of Grosvenor Square. There is a reception room with large french windows and small balcony.

Located conveniently close to Bond Street and Marble Arch Underground Stations, Oxford Street and the world class shops and restaurants of Mayfair.

Accommodation:

- * Two Double Bedrooms
- * Two Bathrooms
- * First Floor
- * French Windows
- * Lift
- * 24-Hour Security

*Wetherell & Co. (Mayfair) Ltd. is a member of the RICS Client money protection Scheme, and also a member of the NAEA, ARLA Propertymark and the property Ombudsman which are Redress schemes.

Any Tenancy that falls outside of the housing act will be subject to Tenant fees. You can find out more details on the Wetherell website or by contacting us directly.

£650 PER WEEK
FURNISHED

Wetherell have no authority to make or give any representations or warranties in relation to the property. These particulars do not form part of any offer or contract and must not be relied upon as statements or representations of fact. Any areas, measurements or distances are approximate. The text, photographs and plans are for guidance only and are not necessarily comprehensive. It should not be assumed that the property has all the necessary planning, building regulation or other consents and Wetherell have not tested any services, equipment or facilities. Purchasers must satisfy themselves by inspection or otherwise. 2020

WETHERELL
MAYFAIR'S FINEST PROPERTIES

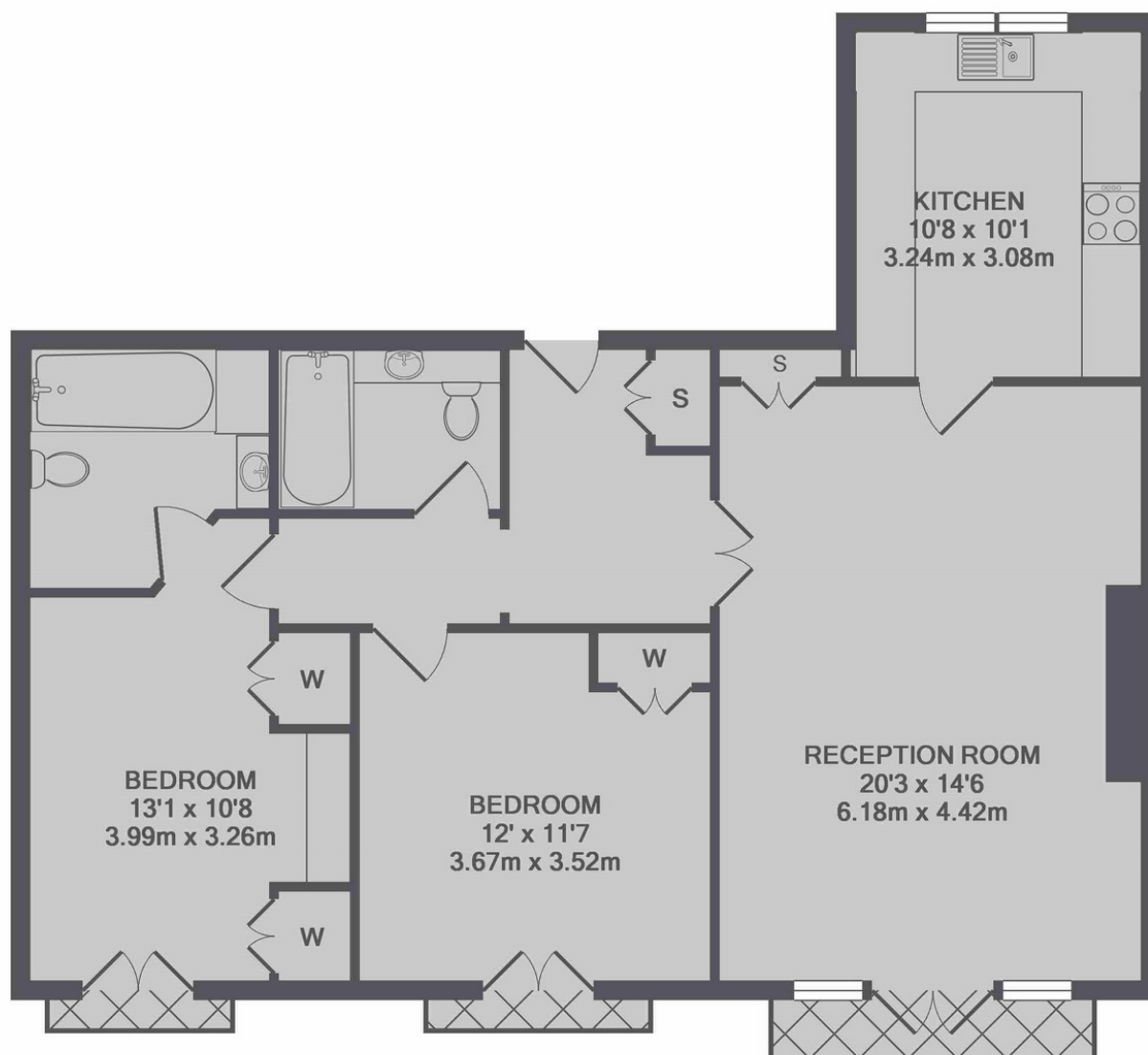
102 Mount Street · London · W1K 2TH
T: 020 7529 5588 E: rentals@wetherell.co.uk
wetherell.co.uk

NO-ONE KNOWS MAYFAIR BETTER THAN WETHERELL





BLACKBURNES MEWS



TOTAL APPROX. FLOOR AREA 920 SQ.FT. (85.5 SQ.M.)

Wetherell have no authority to make or give any representations or warranties in relation to the property. These particulars do not form part of any offer or contract and must not be relied upon as statements or representations of fact. Any areas, measurements or distances are approximate. The text, photographs and plans are for guidance only and are not necessarily comprehensive. It should not be assumed that the property has all the necessary planning, building regulation or other consents and Wetherell have not tested any services, equipment or facilities. Purchasers must satisfy themselves by inspection or otherwise. 2020

WETHERELL

MAYFAIR'S FINEST PROPERTIES

102 Mount Street · London · W1K 2TH
T: 020 7529 5588 E: rentals@wetherell.co.uk
wetherell.co.uk

NO-ONE KNOWS MAYFAIR BETTER THAN WETHERELL

