



UPPER GROSVENOR STREET



£850 PER WEEK
FURNISHED

WETHERELL
MAYFAIR'S FINEST PROPERTIES

102 Mount Street · London · W1K 2TH
T: 020 7529 5588 E: rentals@wetherell.co.uk
wetherell.co.uk

NO-ONE KNOWS MAYFAIR BETTER THAN WETHERELL





UPPER GROSVENOR STREET



A three double bedroom apartment set within this highly sought after building in the heart of Mayfair with porter and lift.

THREE DOUBLE BEDROOMS • TWO BATHROOMS • WOOD FLOORS • LIFT • PORTER
• GUEST WC

NO-ONE KNOWS MAYFAIR BETTER THAN WETHERELL





UPPER GROSVENOR STREET

A three double bedroom apartment set within this highly sought after building in the heart of Mayfair with porter and lift.

Eaton House is in the center of Mayfair to the West of Grosvenor Square close to the world class dining and shopping facilities of Mayfair.

Accommodation:

- * Three Double Bedrooms
- * Two Bathrooms
- * Wood Floors
- * Lift
- * Porter
- * Guest WC

*Wetherell & Co. (Mayfair) Ltd. is a member of the RICS Client money protection Scheme, and also a member of the NAEA, ARLA Propertymark and the property Ombudsman which are Redress schemes.

Any Tenancy that falls outside of the housing act will be subject to Tenant fees. You can find out more details on the Wetherell website or by contacting us directly.

£850 PER WEEK
FURNISHED

Wetherell have no authority to make or give any representations or warranties in relation to the property. These particulars do not form part of any offer or contract and must not be relied upon as statements or representations of fact. Any areas, measurements or distances are approximate. The text, photographs and plans are for guidance only and are not necessarily comprehensive. It should not be assumed that the property has all the necessary planning, building regulation or other consents and Wetherell have not tested any services, equipment or facilities. Purchasers must satisfy themselves by inspection or otherwise. 2021

WETHERELL
MAYFAIR'S FINEST PROPERTIES

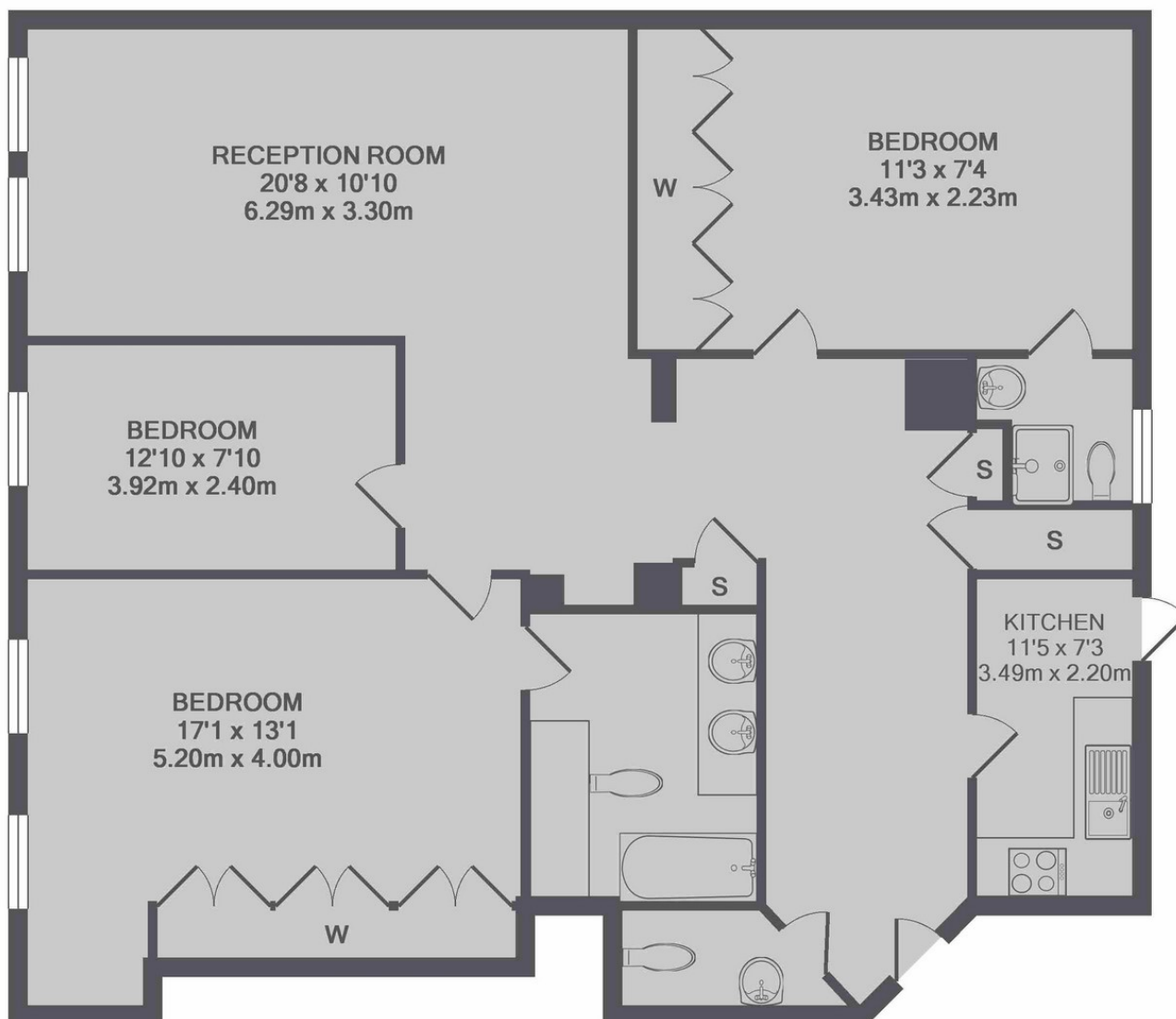
102 Mount Street · London · W1K 2TH
T: 020 7529 5588 E: rentals@wetherell.co.uk
wetherell.co.uk

NO-ONE KNOWS MAYFAIR BETTER THAN WETHERELL





UPPER GROSVENOR STREET



TOTAL APPROX. FLOOR AREA 1152 SQ.FT. (107.0 SQ.M.)
Made with Metropix ©2017

Wetherell have no authority to make or give any representations or warranties in relation to the property. These particulars do not form part of any offer or contract and must not be relied upon as statements or representations of fact. Any areas, measurements or distances are approximate. The text, photographs and plans are for guidance only and are not necessarily comprehensive. It should not be assumed that the property has all the necessary planning, building regulation or other consents and Wetherell have not tested any services, equipment or facilities. Purchasers must satisfy themselves by inspection or otherwise. 2021

WETHERELL

MAYFAIR'S FINEST PROPERTIES

102 Mount Street · London · W1K 2TH
T: 020 7529 5588 E: rentals@wetherell.co.uk
wetherell.co.uk

NO-ONE KNOWS MAYFAIR BETTER THAN WETHERELL

