

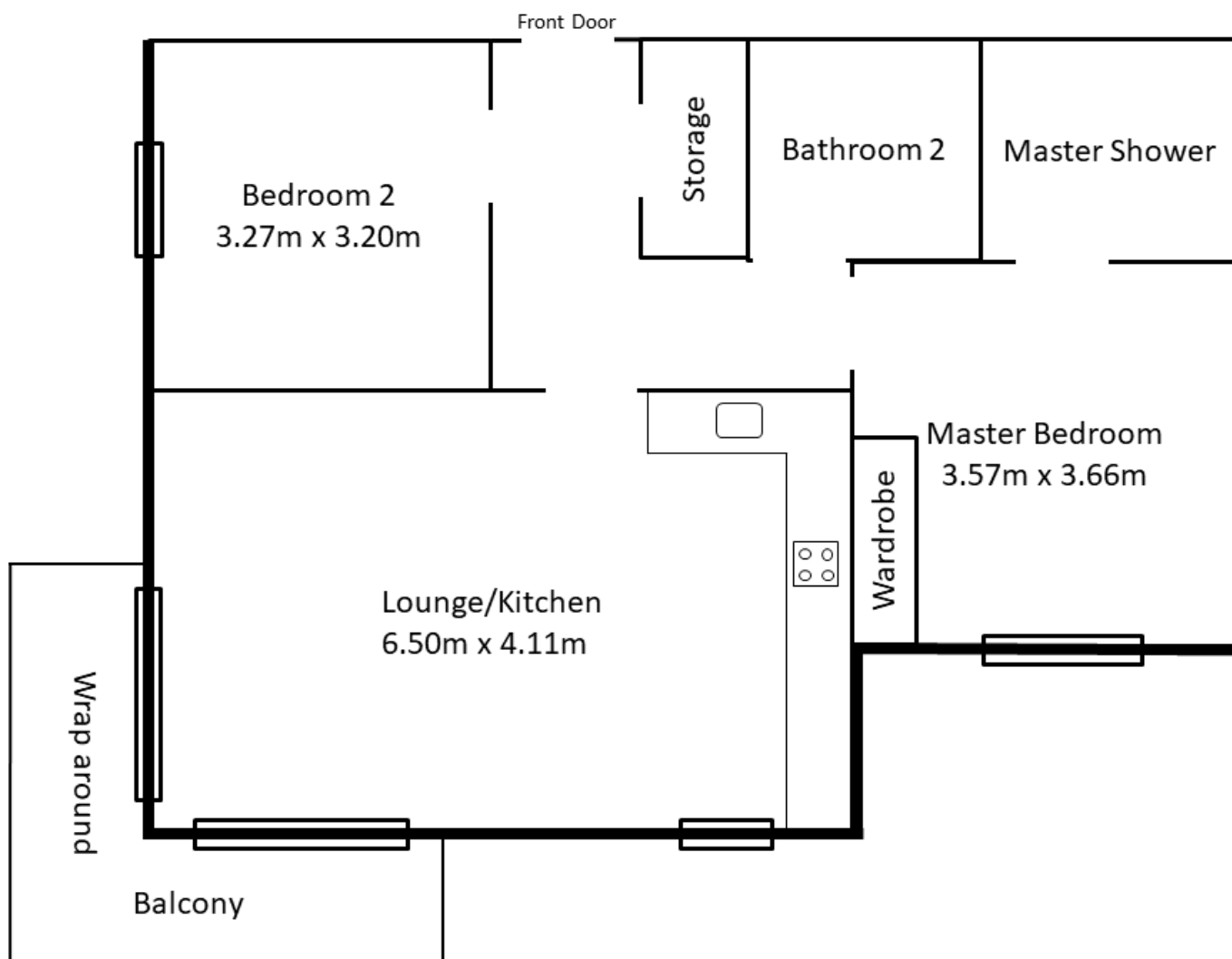
Wintergreen Boulevard, UB7
Offers in excess of £329,000, Leasehold



Early viewing advised for this two bedroom two bathroom 2nd floor flat, remaining lease 993 years with double length south facing balcony with communal gardens and allocated parking space.







broads property services give notice to anyone reading these particulars that: (i) these particulars do not constitute part of an offer or contract; (ii) these particulars and any pictures or plans represent the opinion of the author and are given in good faith for guidance only and must not be construed as statements of fact; (iii) nothing in the particulars shall be deemed a statement that the property is in good condition otherwise; we have not carried out a structural survey of the property and have not tested the services, appliances or specified fittings.

Long Description

Entrance to Lift Services and stairs: with carpeted communal hallways, security phone system.

Door to:

Entrance Hall: Storage cupboard housing combi boiler, Laminated flooring, radiator and doors to all rooms.

Open plan lounge/kitchen

21'4 x 13'5 (6.5m x 4.11m)

Kitchen area with a range of modern wall, base & drawer units, fitted oven & hob, integrated fridge/freezer & washer dryer, down lighting & double glazed windows.

Lounge area radiator 2 sets of double glazed sliding doors to double length south facing balcony.

Master bedroom

12' x 11'8 (3.66m x 3.57m max)

Fitted mirror fronted wardrobes, double glazed windows, radiator.

Ensuite Walk in double shower, hand wash basin, low level w/c, heated towel rail.

Bedroom 2

10'9 x 10'6 (3.27m x 3.20m)

Radiator, double glazed window

Family bathroom

Panel enclosed bath, hand wash basin, low level w/c, downlights, heated towel rail.

Outside

Communal gardens

Allocated parking space.