

Hayes End Drive, UB4
£500,000



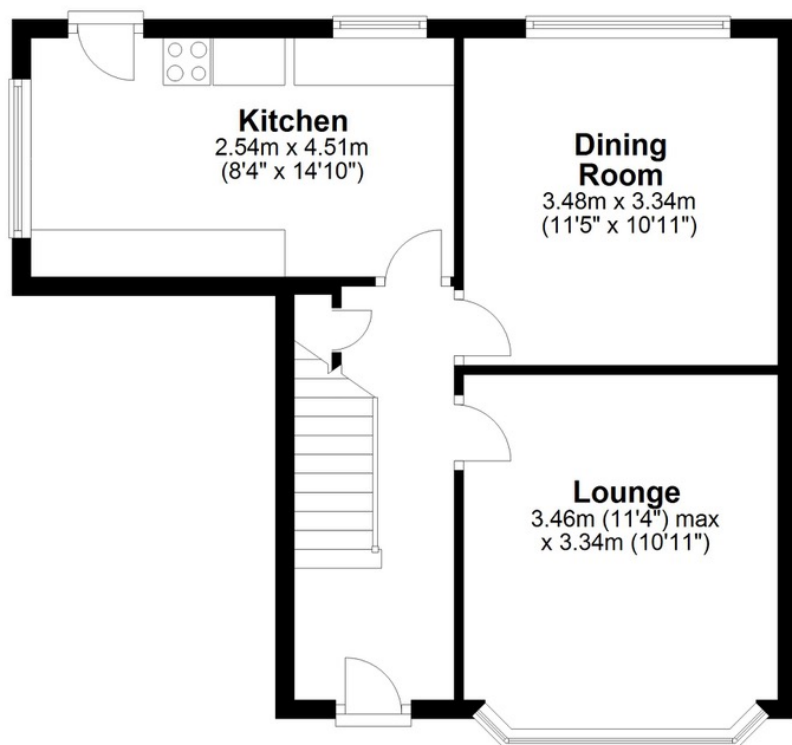
No upper Chain & huge potential for this 3 Bedroom semi detached house located on a generous corner plot.





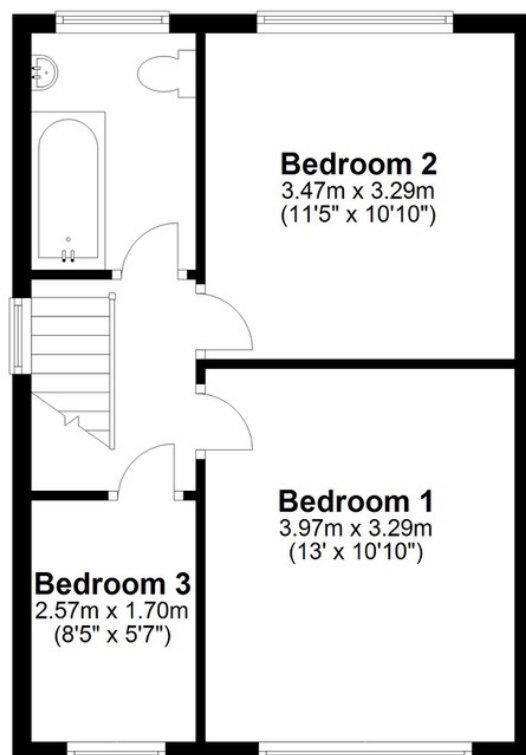
Ground Floor

Approx. 43.7 sq. metres (469.9 sq. feet)



First Floor

Approx. 38.5 sq. metres (414.4 sq. feet)



Total area: approx. 82.2 sq. metres (884.3 sq. feet)

All measurements are approximate and not to scale.
Plan produced using PlanUp.

broads property services give notice to anyone reading these particulars that: (i) these particulars do not constitute part of an offer or contract; (ii) these particulars and any pictures or plans represent the opinion of the author and are given in good faith for guidance only and must not be construed as statements of fact; (iii) nothing in the particulars shall be deemed a statement that the property is in good condition otherwise; we have not carried out a structural survey of the property and have not tested the services, appliances or specified fittings.

Long Description

The property has an entrance hall, lounge, separate dining room, kitchen/breakfast room, 3 bedrooms and a bathroom. Outside has a pretty well stocked pond, rear a large side garden. Excellent extension potential STPP. The property also boasts a detached brick effect concrete garage with gated own drive.