



# WOODSTOCK STREET



£415 PER WEEK  
FURNISHED

**WETHERELL**  
MAYFAIR'S FINEST PROPERTIES

102 Mount Street · London · W1K 2TH  
T: 020 7529 5588 E: [rentals@wetherell.co.uk](mailto:rentals@wetherell.co.uk)  
[wetherell.co.uk](http://wetherell.co.uk)

NO-ONE KNOWS MAYFAIR BETTER THAN WETHERELL





## WOODSTOCK STREET



A recently refurbished one bedroom apartment with an open-plan kitchen/reception room on the third and fourth floors of this attractive building, close to Bond Street underground station and off Oxford Street,

**SPACIOUS DOUBLE BEDROOM • THIRD AND FOURTH FLOORS • SHOWER ROOM •  
RECENTLY REFURBISHED • PERIOD BUILDING • OPEN PLAN**

NO-ONE KNOWS MAYFAIR BETTER THAN WETHERELL







## WOODSTOCK STREET

A recently refurbished one bedroom apartment with an open-plan kitchen/reception room on the third and fourth floors of this attractive building, close to Bond Street underground station, and off Oxford Street.

The building is conveniently located close to New Bond Street with all of Mayfair's amenities on your door step.

### Accommodation:

- \* Spacious Double Bedroom
- \* Third and Fourth Floors
- \* Open Plan
- \* Period Building
- \* Recently Refurbished
- \* Shower Room

\*Wetherell & Co. (Mayfair) Ltd. is a member of the RICS Client money protection Scheme, and also a member of the NAEA, ARLA Propertymark, and the property Ombudsman which are Redress schemes.

Any Tenancy that falls outside of the housing act will be subject to Tenant fees. You can find out more details on the Wetherell website or by contacting us directly.

£415 PER WEEK  
FURNISHED

Wetherell have no authority to make or give any representations or warranties in relation to the property. These particulars do not form part of any offer or contract and must not be relied upon as statements or representations of fact. Any areas, measurements or distances are approximate. The text, photographs and plans are for guidance only and are not necessarily comprehensive. It should not be assumed that the property has all the necessary planning, building regulation or other consents and Wetherell have not tested any services, equipment or facilities. Purchasers must satisfy themselves by inspection or otherwise. 2021

**WETHERELL**  
MAYFAIR'S FINEST PROPERTIES

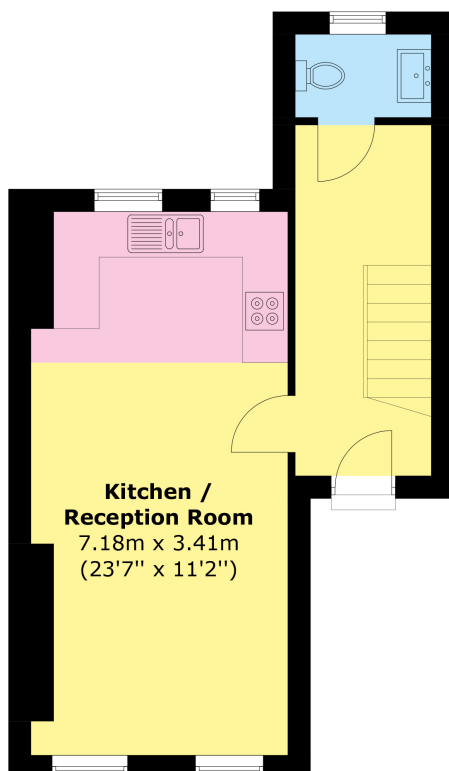
102 Mount Street · London · W1K 2TH  
T: 020 7529 5588 E: [rentals@wetherell.co.uk](mailto:rentals@wetherell.co.uk)  
[wetherell.co.uk](http://wetherell.co.uk)

NO-ONE KNOWS MAYFAIR BETTER THAN WETHERELL

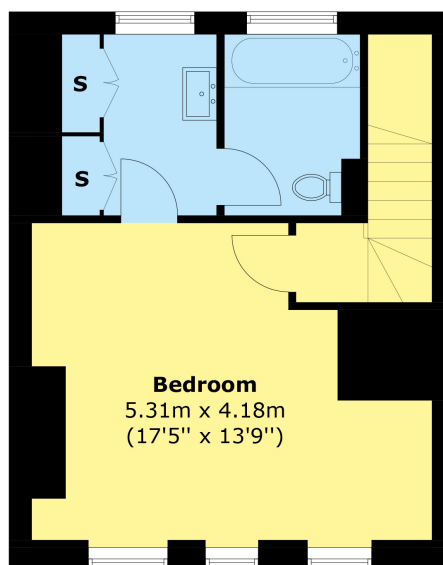




WOODSTOCK STREET



**Third Floor**



**Fourth Floor**

Area (approx.): 69.3 sq. m (746.4 sq. ft)

Wetherell have no authority to make or give any representations or warranties in relation to the property. These particulars do not form part of any offer or contract and must not be relied upon as statements or representations of fact. Any areas, measurements or distances are approximate. The text, photographs and plans are for guidance only and are not necessarily comprehensive. It should not be assumed that the property has all the necessary planning, building regulation or other consents and Wetherell have not tested any services, equipment or facilities. Purchasers must satisfy themselves by inspection or otherwise. 2021

**WETHERELL**  
MAYFAIR'S FINEST PROPERTIES

102 Mount Street · London · W1K 2TH  
T: 020 7529 5588 E: [rentals@wetherell.co.uk](mailto:rentals@wetherell.co.uk)  
[wetherell.co.uk](http://wetherell.co.uk)

NO-ONE KNOWS MAYFAIR BETTER THAN WETHERELL

