

Attlee Road, UB4 £390,000, Freehold



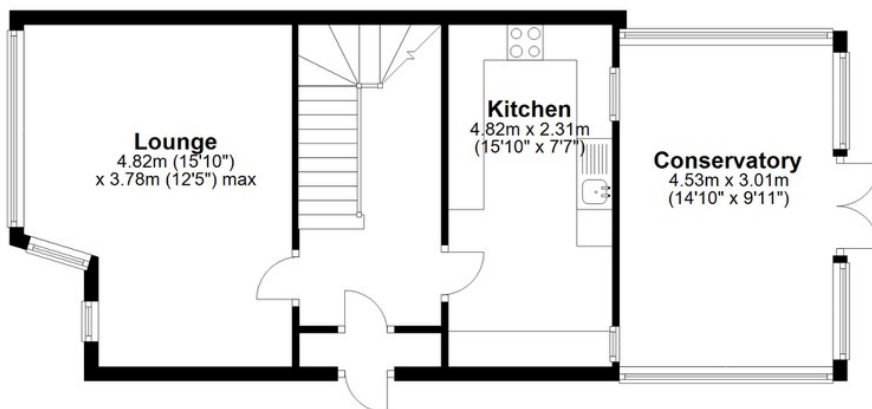
Spacious and well presented 2 double bedroom extended semi-detached house with gas central heating and double-glazed windows. Entrance hall, good sized lounge, fitted kitchen / breakfast room. Spacious double-glazed and centrally heated conservatory, 2 double bedrooms & modern bathroom. Outside has a 60' rear garden and storage shed. Forecourt parking for 2 cars.





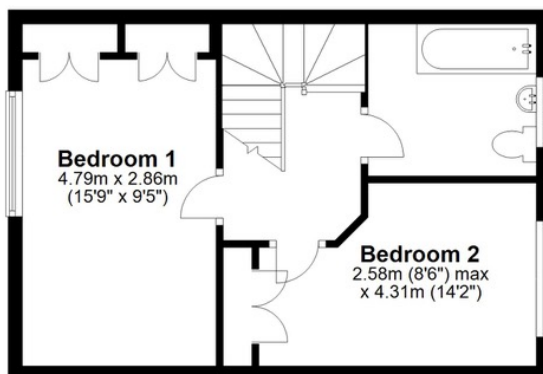
Ground Floor

Approx. 52.3 sq. metres (562.5 sq. feet)



First Floor

Approx. 34.8 sq. metres (374.3 sq. feet)



Total area: approx. 87.0 sq. metres (936.7 sq. feet)

All measurements are approximate and not to scale.
Plan produced using PlanUp.

broads property services give notice to anyone reading these particulars that: (i) these particulars do not constitute part of an offer or contract; (ii) these particulars and any pictures or plans represent the opinion of the author and are given in good faith for guidance only and must not be construed as statements of fact; (iii) nothing in the particulars shall be deemed a statement that the property is in good condition otherwise; we have not carried out a structural survey of the property and have not tested the services, appliances or specified fittings.

Long Description

Spacious and well presented 2 double bedroom extended semi-detached house with gas central heating and double-glazed windows.

Entrance hall, good sized lounge, fitted kitchen / breakfast room.

Spacious double-glazed and centrally heated conservatory, 2 double bedrooms & modern bathroom.

Outside has a 60' rear garden and storage shed.

Forecourt parking for 2 cars.