



COPPER HALL

Thames Ditton



A jewel in Thames Ditton's crown.

As you sweep into the circular drive, it's hard not to be impressed by Copper Hall. Lovingly owned by the same family for almost 40 years, it is a beautifully presented and expertly restored Grade II Listed Georgian house, built circa 1760.

This handsome property has the traditional square layout common to the period and boasts an abundance of original features including high corniced ceilings, ornate lead hoppers and original servant bells.









With every door you open you can see that this is a very special home...

On entering Copper Hall, you're met with an impressive hallway with high ceiling and panelled doors, which open on to two well-proportioned rooms - these doors can be folded open to create one large double reception room. The sitting room enjoys beautiful views over the mature west-facing walled gardens and features two doors leading onto a Yorkstone terrace which is ideal for outdoor entertaining. Both rooms feature wonderful fireplaces and double aspect sash windows, which flood each room with light and a feeling of space.

The kitchen/breakfast room has a distinctly rural feel with recessed Aga in a brick chimney breast, quarry tiled floor and hand made cabinets. A feature has been made of the old pump which used to supply water from the original well.

Off the stone paved inner hallway, between cloakroom and laundry room there is a substantial brick floored wine cellar; the temperature control air-conditioning also warms the double garage.

The Georgian open-string staircase sweeps you upstairs to six bedrooms. The master suite with handmade mahogany wardrobes and en-suite bathroom. A separate family bathroom showcases a magnificent Victorian mahogany encased bath.

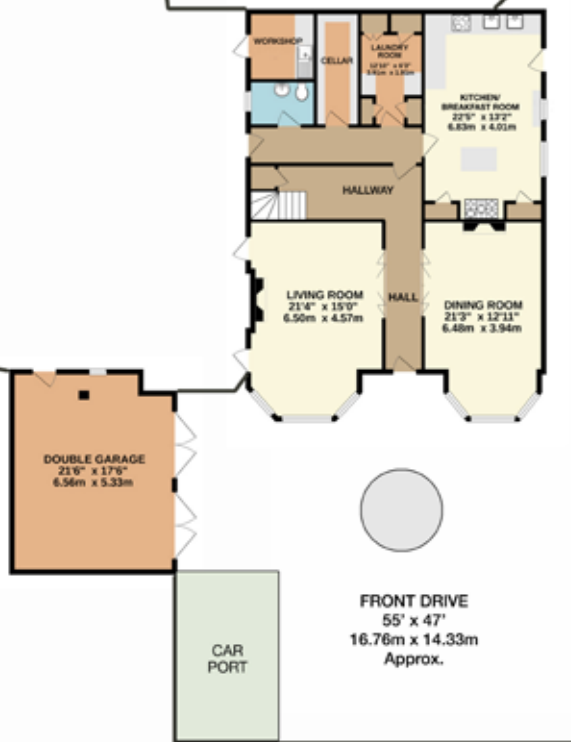
One bedroom currently serves as an office of grand proportions with fitted bookcase. The two top floor rooms reached via a service staircase also give access to significant storage.



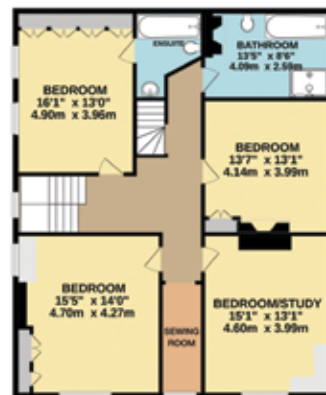


Ground floor

GARDEN
130' x 78'
39.63m x 23.77m
Approx.



Second floor

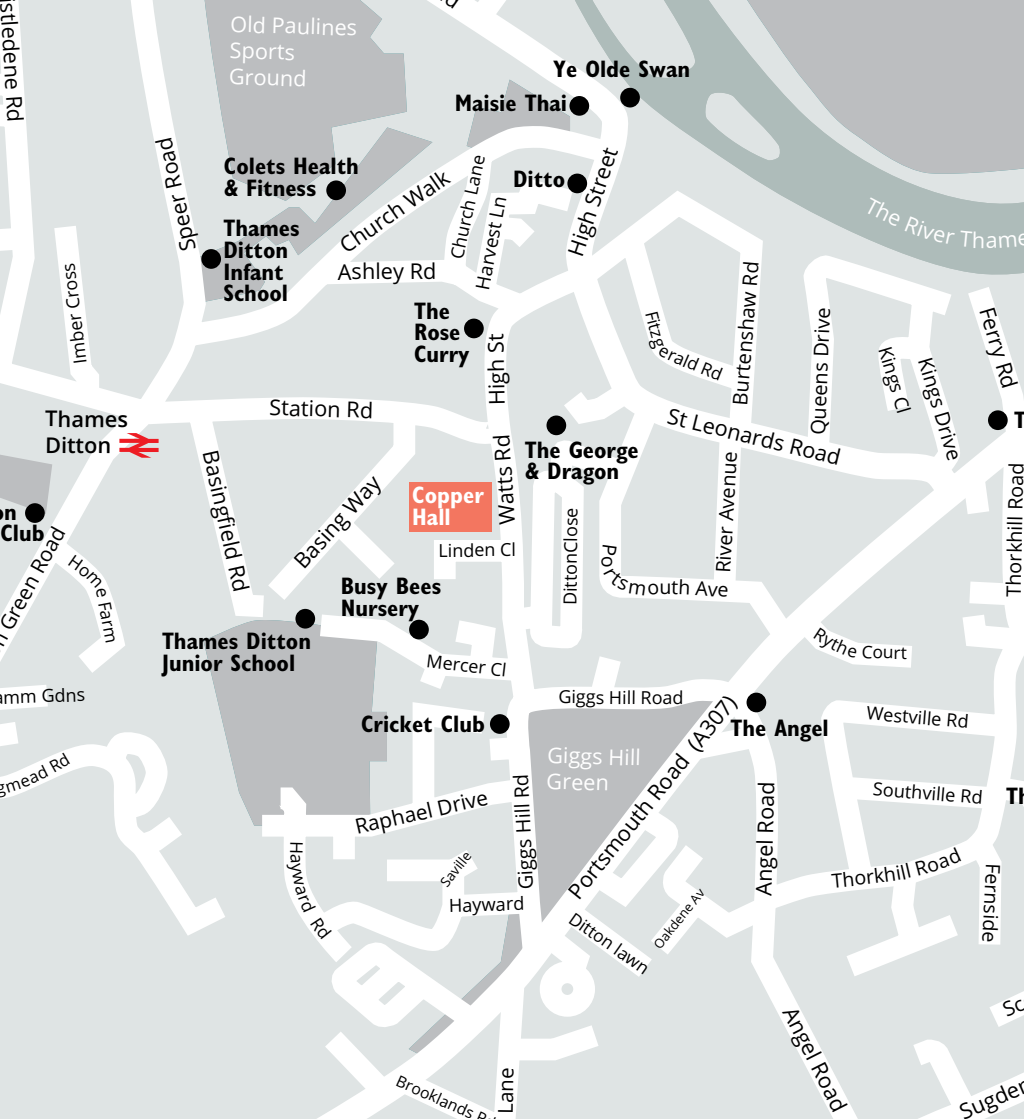


First floor



COPPER HALL,
THAMES DITTON
INTERNAL FLOOR AREA (APPROX.)
3140 sq ft/ 291.71 sq m
Excluding Garage

Whilst every attempt has been made to ensure the accuracy of this floor plan, measurement of doors, windows, rooms and any other items are approximate and no responsibility is taken for any error, omission or mis-statement.
Made with Metropix © 2020.



Where town meets country...

Thames Ditton is a bustling chocolate box village located on the outskirts of London in leafy Surrey.

Brimming with pubs, restaurants and amenities yet retaining its traditional village character it's easy to see why people move here and stay for good.

With top schools, an abundance of green spaces and clubs, not to mention The River Thames and all it has to offer, Thames Ditton proposes a fantastic lifestyle with modern conveniences just half an hour from London by rail, and a short drive to the M25, Heathrow and Gatwick airports.





H J C

HIGHER VALUES

2 High Street, Thames Ditton KT7 0RY
020 8398 3707 www.hjc.co.uk