

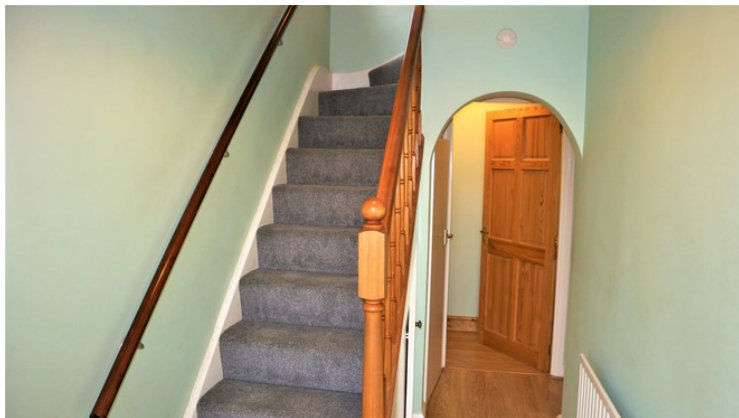
Lansbury Drive, UB4 £1,600 per month, For long let



AVAILABLE NOW!

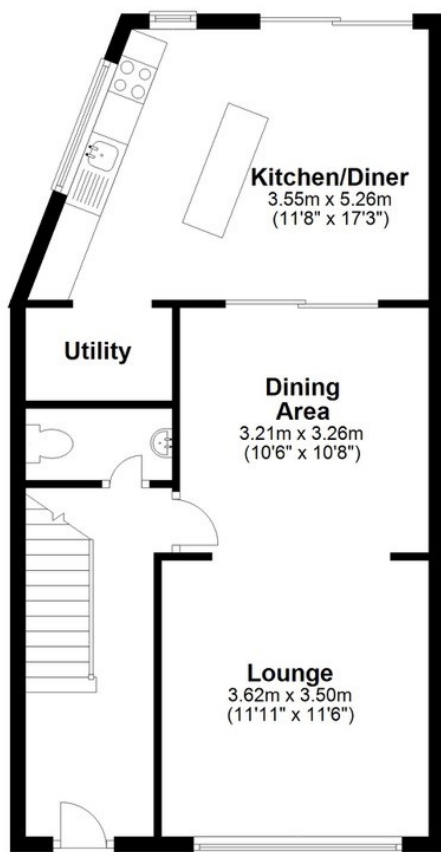
Part furnished 3/4 bedroom extended semi detached house. Spacious & well presented throughout, residential location close to schools, shops & main bus route links. Gas central heating & double glazed windows, extended entrance hall, large lounge, downstairs toilet, kitchen/ diner extension & utility room. 3 good sized bedrooms + a bonus loft room used as a 4th bedroom. 80' approx. rear garden with patio & lawn (shed & greenhouse) Shared driveway & forecourt parking for 2 cars.





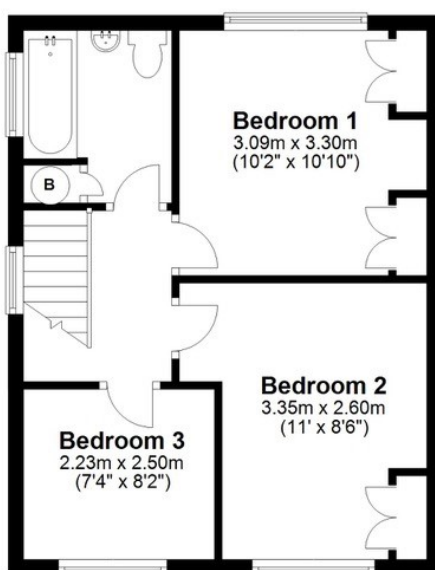
Ground Floor

Approx. 53.3 sq. metres (574.1 sq. feet)



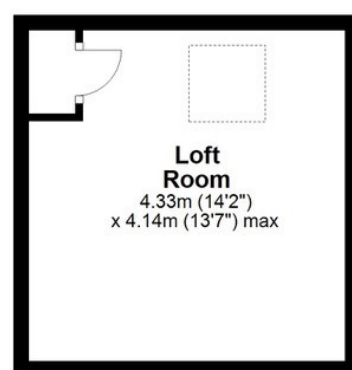
First Floor

Approx. 35.5 sq. metres (382.3 sq. feet)



Second Floor

Approx. 17.9 sq. metres (193.0 sq. feet)



Total area: approx. 106.8 sq. metres (1149.3 sq. feet)

All measurements are approximate
Plan produced using PlanUp.

broads property services give notice to anyone reading these particulars that: (i) these particulars do not constitute part of an offer or contract; (ii) these particulars and any pictures or plans represent the opinion of the author and are given in good faith for guidance only and must not be construed as statements of fact; (iii) nothing in the particulars shall be deemed a statement that the property is in good condition otherwise; we have not carried out a structural survey of the property and have not tested the services, appliances or specified fittings.

Long Description

AVAILABLE NOW!

Part furnished 3/4 bedroom extended semi detached house. Spacious & well presented throughout, residential location close to schools, shops & main bus route links.

Gas central heating & double glazed windows, extended entrance hall, large lounge, downstairs toilet, kitchen/ diner extension & utility room.

3 good sized bedrooms + a bonus loft room used as a 4th bedroom.

80' approx. rear garden with patio & lawn (shed & greenhouse)

Shared driveway & forecourt parking for 2 cars.