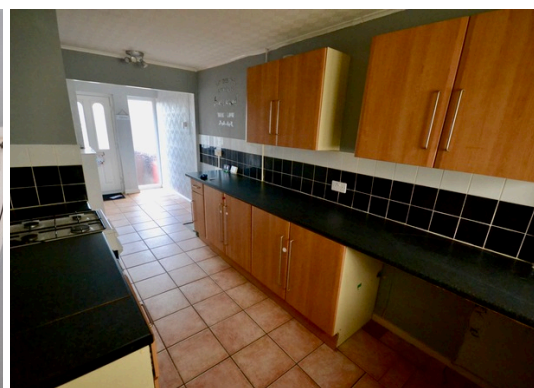
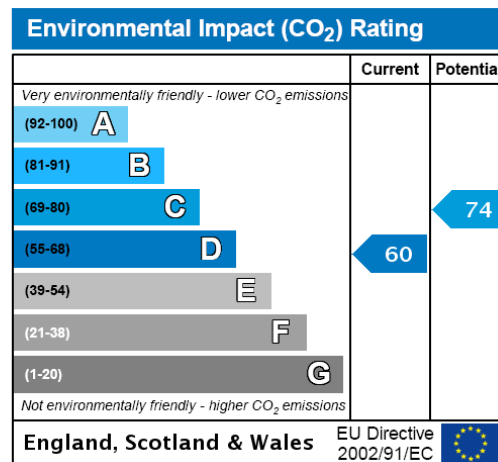
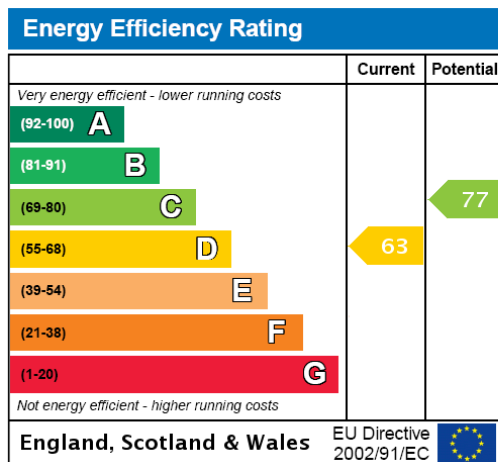




- * Three Bedroom Mid Terrace House
- * Front & Rear Gardens
- * No Chain!
- * Conservatory
- * Gas Centrally Heated & Double Glazed





Three bedroom mid terrace property available to market with no chain!

Situated in Bootle excellent transport links to the M57/M58 and public transport links.

The property benefits from front & rear gardens, gas central heating, double glazing and a conservatory.

Property Comprises Of:

Kitchen - 5'9" x 25'

Lounge - 23'8" x 9'5"

Conservatory - 19' x 8'

First Floor:

Bedroom One - 12'4" x 9'5" - walk in storage space

Bedroom Two - 12'3" x 6'

Bedroom Three - 11'6" x 11'2"

Bathroom - 7'3" x 7'8"

External:

Front & Rear Gardens

These particulars do not form part of any offer or contract and must not be relied upon as statements or representations of fact. Any areas, measurements or distances are approximate. The text, photographs and plans are for guidance only and are not necessarily comprehensive. It should not be assumed that the property has all the necessary planning, building regulation or other consents and we have not tested services, equipment or facilities. Purchasers must satisfy themselves by inspection or otherwise.