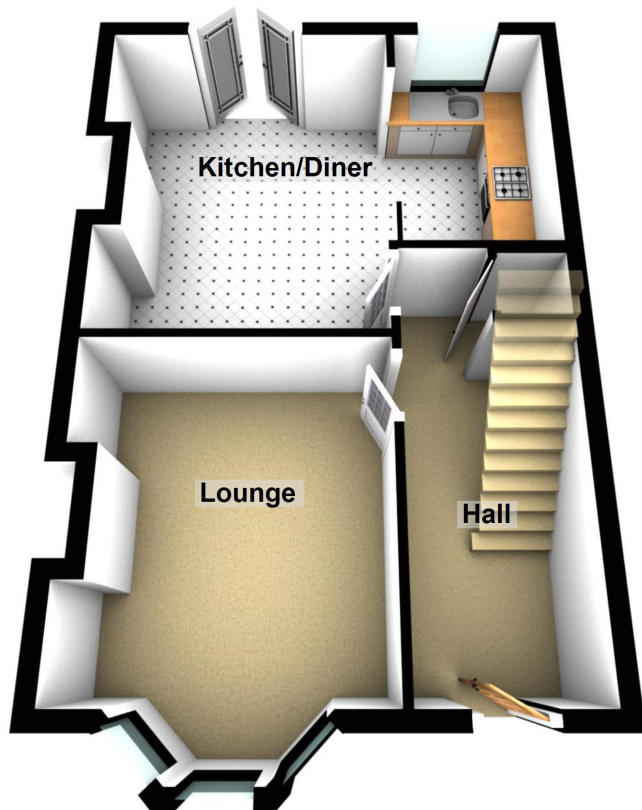




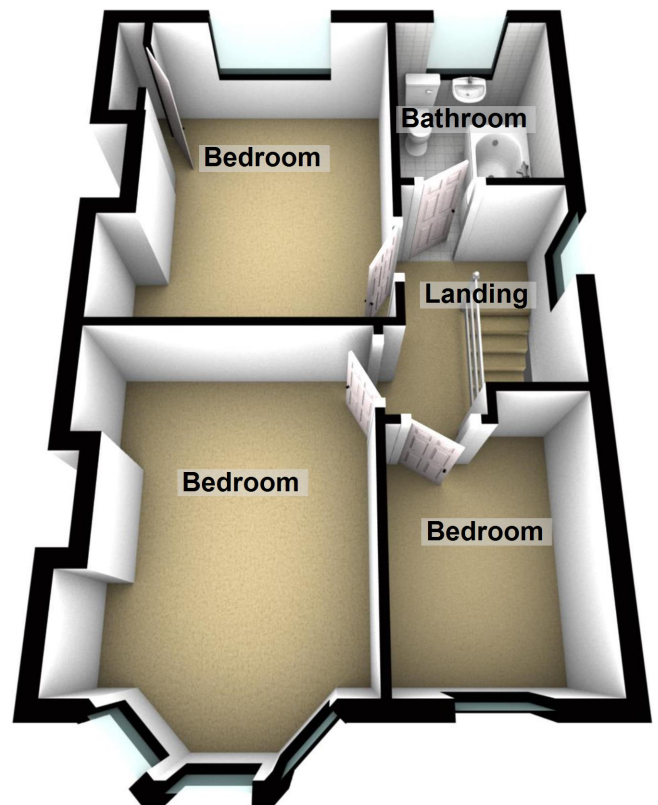
- * THREE BEDROOM SEMI-DETACHED HOUSE
- * UPDATED & MODERNISED THROUGHOUT
- * OPEN PLAN KITCHEN/SITTING/DINING ROOM
 - * REAR GARDEN NOT OVERLOOKED
 - * NO CHAIN
- * GAS CENTRALLY HEATED & DOUBLE GLAZED



Ground Floor

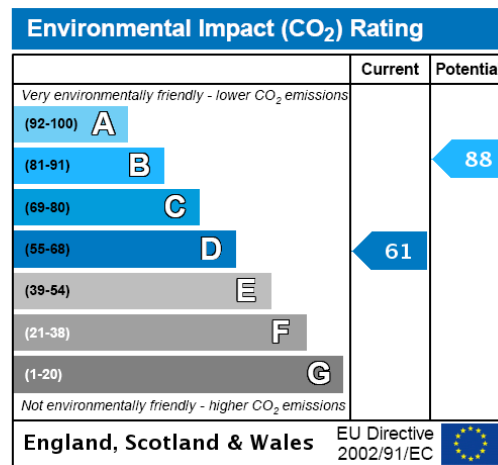
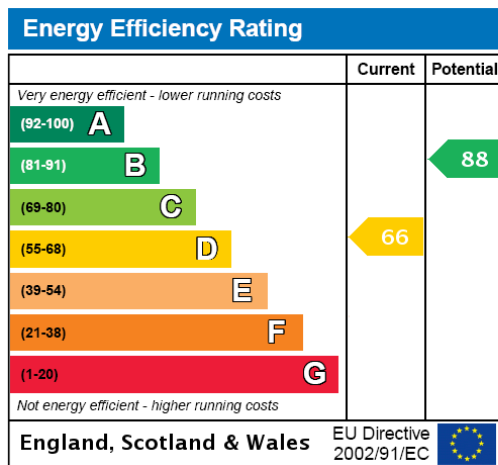


First Floor



Dove Road, Liverpool

These particulars do not form part of any offer or contract and must not be relied upon as statements or representations of fact. Any areas, measurements or distances are approximate. The text, photographs and plans are for guidance only and are not necessarily comprehensive. It should not be assumed that the property has all the necessary planning, building regulation or other consents and we have not tested services, equipment or facilities. Purchasers must satisfy themselves by inspection or otherwise.



Newly refurbished & modernised three bedroom semi-detached house.

The property has been renovated throughout & benefits from front & rear gardens. The rear garden is not overlooked from neighbours.

Accommodation comprises of:

Ground Floor:

Entrance Hall

Front Lounge - 13'4" x 10'9"

Sitting/Dining/ Fitted Kitchen - 17' x 13' max (L-Shaped) - Open plan room with double patio doors

First Floor:

Bedroom One - Front - 13'8" x 10'1" into bay

Bedroom Two - Rear - 13' x 10'

Bedroom Three - Front - 8'4" x 6'7" max

Bathroom- New suite & tiled walls - 7'3" x 5'9"

Exterior:

Front Garden

Rear Garden - Aprox 60' in length

These particulars do not form part of any offer or contract and must not be relied upon as statements or representations of fact. Any areas, measurements or distances are approximate. The text, photographs and plans are for guidance only and are not necessarily comprehensive. It should not be assumed that the property has all the necessary planning, building regulation or other consents and we have not tested services, equipment or facilities. Purchasers must satisfy themselves by inspection or otherwise.