




**Nassington Road, Hampstead Heath, NW3
£865,000, Share of Freehold**



A charming two bedroom, two bathroom apartment, converted from the first floor of a substantial four storey semi-detached red brick Victorian house on the highly sought after Nassington Road, moments from Hampstead Heath.

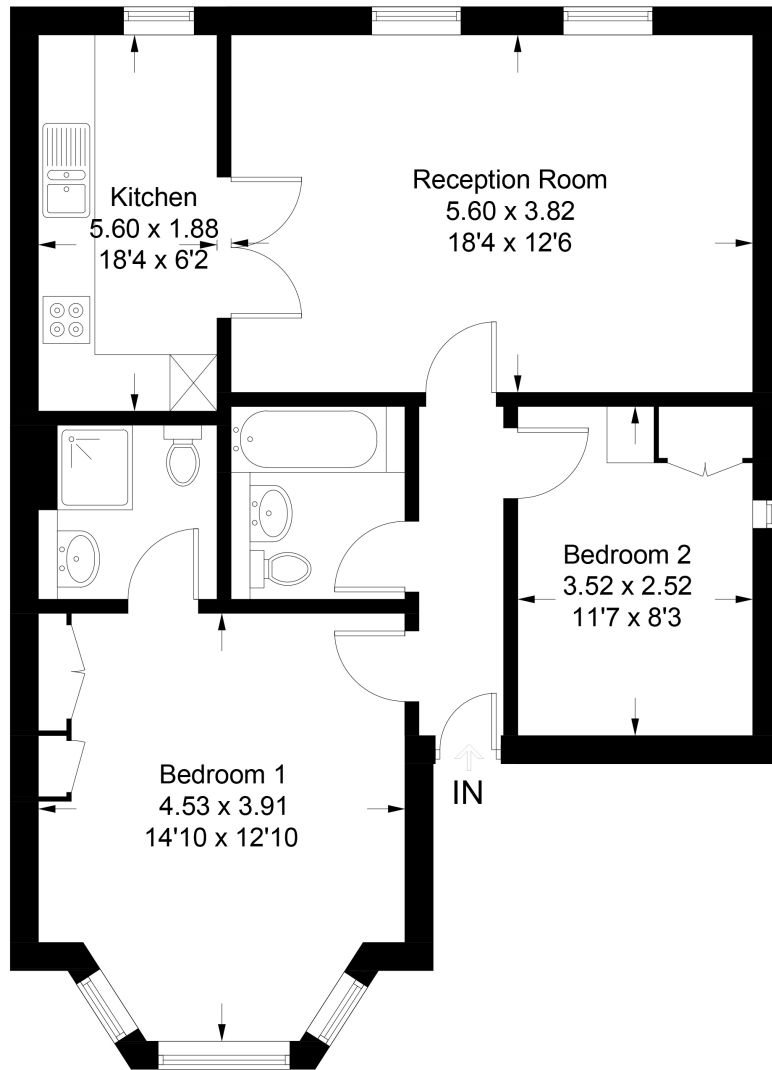




Energy Efficiency Rating		
	Current	Potential
Very energy efficient - lower running costs		
(92-100) A		
(81-91) B		
(69-80) C	74	81
(55-68) D		
(39-54) E		
(21-38) F		
(1-20) G		
Not energy efficient - higher running costs		
England, Scotland & Wales	EU Directive 2002/91/EC 	

Nassington Road

Approximate Gross Internal Area = 67.7 sq m / 729 sq ft



Ground Floor

Illustration for identification purposes only, measurements are approximate, not to scale.

Salter Rex give notice to anyone reading these particulars that: (i) these particulars do not constitute part of an offer or contract; (ii) these particulars and any pictures or plans represent the opinion of the author and are given in good faith for guidance only and must not be construed as statements of fact; (iii) nothing in the particulars shall be deemed a statement that the property is in good condition otherwise; we have not carried out a structural survey of the property and have not tested the services, appliances or specified fittings.

Long Description

A charming two bedroom apartment, situated approximately only 65 metres from Hampstead Heath.

Set on the first floor of a handsome red brick semi-detached Victorian house, the property is bright and airy, comprising two double bedrooms (one with en suite shower), large reception with views across London, kitchen and further family bathroom.

Nassington Road is ideally located for access to the Heath and local amenities of South End Green and Belsize Park, with Hampstead Heath Overground Station close by, and Hampstead and Belsize Park (Northern Line) tube stations within easy reach, providing excellent links to the City and West End.