

Cavendish Close, UB4
Offers in excess of £285,000, Leasehold



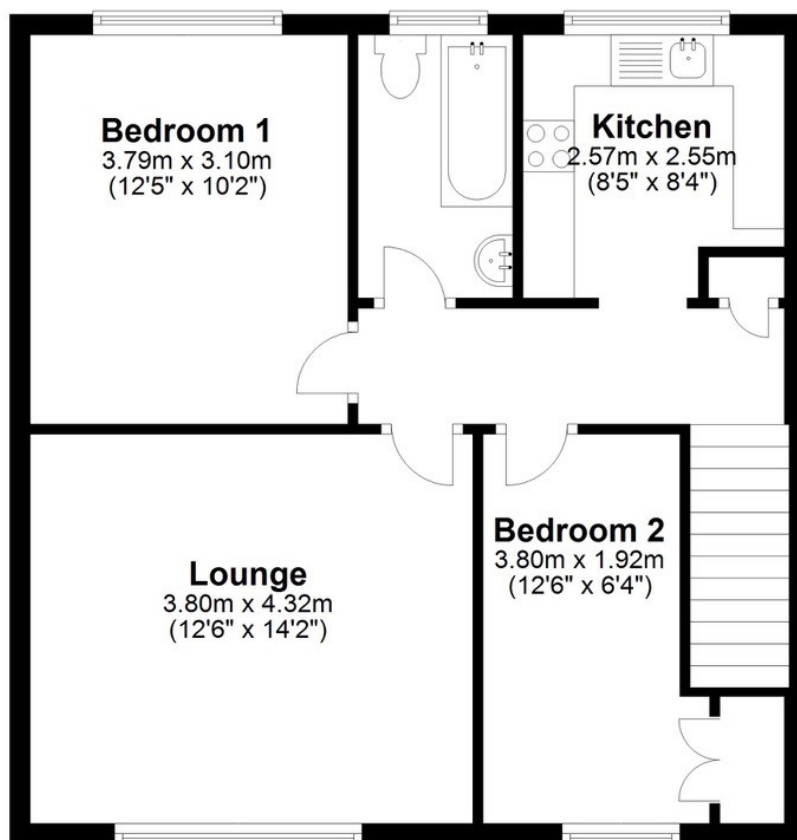
Superb location for this 2 double bedroom first floor maisonette with a garage & own private garden. 100 year lease & no service charges, gas central heating (combi boiler) & double glazed windows, landing with doors to all rooms + storage, kitchen space, good sized lounge, 2 double bedrooms, bathroom with electric shower unit. Own rear garden & a garage in a gated & secure separate area.





First Floor

Approx. 56.7 sq. metres (610.5 sq. feet)



Total area: approx. 56.7 sq. metres (610.5 sq. feet)

All measurements are approximate and not to scale.
Plan produced using PlanUp.

broads property services give notice to anyone reading these particulars that: (i) these particulars do not constitute part of an offer or contract; (ii) these particulars and any pictures or plans represent the opinion of the author and are given in good faith for guidance only and must not be construed as statements of fact; (iii) nothing in the particulars shall be deemed a statement that the property is in good condition otherwise; we have not carried out a structural survey of the property and have not tested the services, appliances or specified fittings.

Long Description

Superb location for this 2 double bedroom first floor maisonette with a garage & own private garden. 100 year lease & no service charges, gas central heating (combi boiler) & double glazed windows, landing with doors to all rooms + storage, kitchen space, good sized lounge, 2 double bedrooms, bathroom with electric shower unit.

Own rear garden & a garage in a gated & secure separate area.