

## RAVENSCHROFT AVENUE, GOLDERS GREEN, NW11 £2,167 per month, For long let




A large three bedroom flat located in the heart of Golders Green in a purpose built block with a lift

The property benefits from two bathrooms (one en-suite), a large reception room, two balconies and is available now.

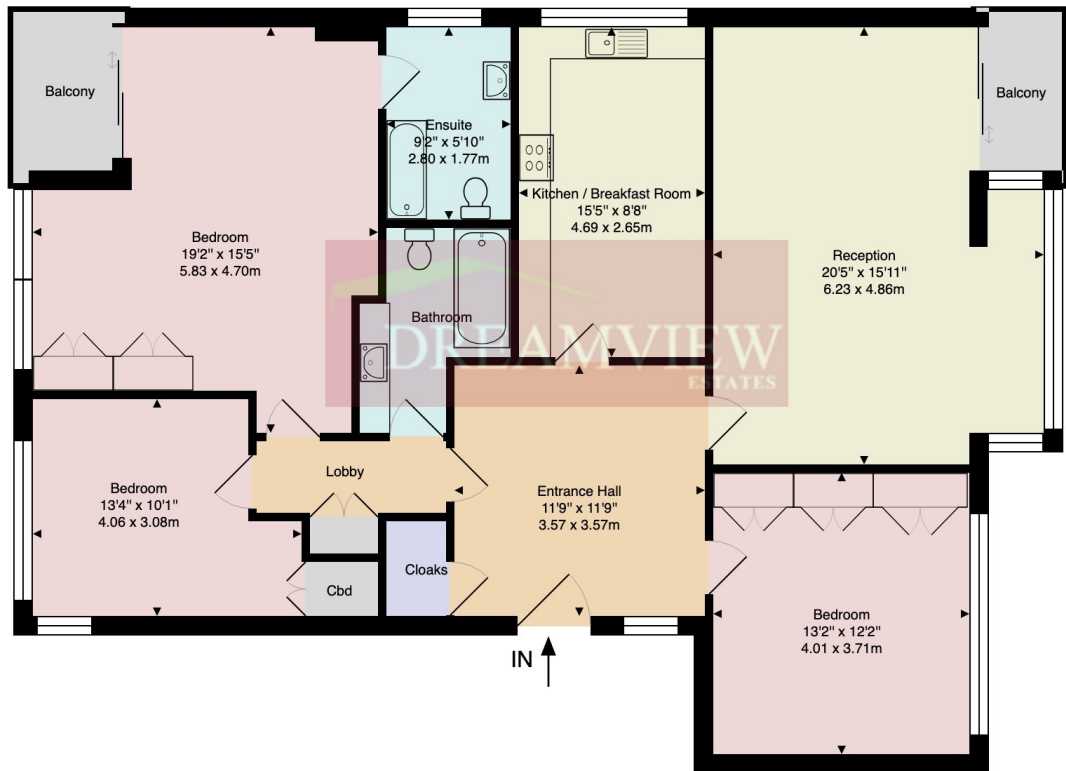






Energy Efficiency Rating		
	Current	Potential
Very energy efficient - lower running costs		
(92-100) <b>A</b>		
(81-91) <b>B</b>		
(69-80) <b>C</b>		79
(55-68) <b>D</b>	60	
(39-54) <b>E</b>		
(21-38) <b>F</b>		
(1-20) <b>G</b>		
Not energy efficient - higher running costs		
England, Scotland & Wales		EU Directive 2002/91/EC 

## Ravenscroft Court NW11



Third Floor

Approx. Gross Internal Area: 1288 ft<sup>2</sup> ... 119.7 m<sup>2</sup>

All measurements and areas are approximate only.  
Dimensions are not to scale. This plan is for guidance  
only and must not be relied upon as a statement of fact.  
(c) Peninsula Surveys Ltd

Dreamview Estates give notice to anyone reading these particulars that: (i) these particulars do not constitute part of an offer or contract; (ii) these particulars and any pictures or plans represent the opinion of the author and are given in good faith for guidance only and must not be construed as statements of fact; (iii) nothing in the particulars shall be deemed a statement that the property is in good condition otherwise; we have not carried out a structural survey of the property and have not tested the services, appliances or specified fittings.

## Long Description

\*Large three bedroom flat located in the heart of Golders Green in a purpose built block with a lift.

\*The property benefits from two bathrooms (one en-suite), a large reception room, wood flooring, eat-in kitchen, double glazing and two balconies.

\*The block is a short walk from shops and the Golders Green tube station and the flat is offered fully furnished.

Available now