



High Road, UB10
£1,230 per month, For long let



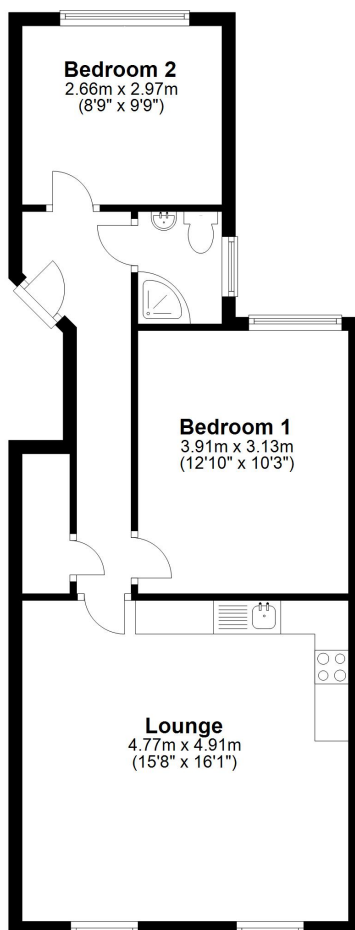
Orchard Property Services are delighted to market this impressive and deceptively spacious two double bedroom first floor flat situated only moments away from excellent transport links including Ickenham & West Ruislip stations.





First Floor

Approx. 54.5 sq. metres (586.2 sq. feet)



Total area: approx. 54.5 sq. metres (586.2 sq. feet)

All measurements are approximate
Plan produced using PlanUp.

Orchard Property Services give notice to anyone reading these particulars that: (i) these particulars do not constitute part of an offer or contract; (ii) these particulars and any pictures or plans represent the opinion of the author and are given in good faith for guidance only and must not be construed as statements of fact; (iii) nothing in the particulars shall be deemed a statement that the property is in good condition otherwise; we have not carried out a structural survey of the property and have not tested the services, appliances or specified fittings.

Long Description

Orchard Property Services are delighted to market this impressive and deceptively spacious two double bedroom first floor flat situated only moments away from excellent transport links including Ickenham & West Ruislip stations. The property would be ideal for all types of professional tenants looking to move in to the local area. Benefiting from a modern fitted kitchen and shower room, we would recommend an internal inspection.

The accommodation briefly comprises of an entrance hall with storage cupboard, spacious sun lit lounge and kitchen with dining space, two double bedrooms and a shower room.

Location

Located on one of Ickenham's most prestigious areas, High Road is only moments away from local sought after schools including Vyners and Breakspear, walking distance to the scenic views of Swakeleys Park, Swakeleys Tennis Club and Swakeleys House. Ickenham Village is also a short distance away with its array of local shops, restaurants and public houses. Bus routes are scattered across the Ickenham area with easy access to Ruislip & Uxbridge with the added benefit of Ickenham & West Ruislip Stations (Metropolitan, Piccadilly, Central & Chiltern lines), A40/M40/M25 access is also close by.

AVAILABLE SEPTEMBER 2021