



MOUNT STREET

MAYFAIR



A South facing three bedroom top floor apartment with wonderful views along Mount Street, benefiting from a lift and porter.

£1,800 PER WEEK PLUS FEES
FURNISHED

WETHERELL
MAYFAIR'S FINEST PROPERTIES

102 Mount Street · London · W1K 2TH
T: 020 7529 5588 E: rentals@wetherell.co.uk
wetherell.co.uk

NO-ONE KNOWS MAYFAIR BETTER THAN WETHERELL





MOUNT STREET MAYFAIR



LIFT & PORTER • PRIME CENTRAL LOCATION • TWO PRIVATE BALCONIES

NO-ONE KNOWS MAYFAIR BETTER THAN WETHERELL





MOUNT STREET MAYFAIR

A South facing three bedroom top floor apartment with wonderful views along Mount Street, benefiting from a lift and porter.

In the heart of the Mayfair Village this elegant apartment offers three large double bedrooms. The bright double reception/dining room and master suite take full advantage of the fantastic views offered from Juliet balconies, whilst the separate family kitchen is well situated at the rear of the apartment. There are two further double bedrooms with the second benefiting from a large en-suite bathroom. With good ceiling heights throughout this is a fine example of a classic Mayfair apartment ideal for a young family or pied-à-terre.

Situated between Park Lane and South Audley Street, this apartment is wonderfully placed to enjoy all that Mayfair has to offer, from the boutique shops on Mount Street to the open spaces of Hyde Park.

- * Reception/Dining Room
- * Kitchen
- * Master Bedroom with En-Suite Bathroom
- * Second Bedroom with En-Suite Bathroom
- * Guest Bedroom
- * Shower Room
- * Two Balconies
- * Lift
- * Porter
- * 1,599 Square Feet

* Tenant Fees Apply - £240.00 inclusive of VAT is payable by the Tenant for Wetherell conducting tenant checks, credit checks and drawing up a tenancy agreement. Cost is payable per unit dwelling.



£1,800 PER WEEK PLUS FEES
FURNISHED

Wetherell have no authority to make or give any representations or warranties in relation to the property. These particulars do not form part of any offer or contract and must not be relied upon as statements or representations of fact. Any areas, measurements or distances are approximate. The text, photographs and plans are for guidance only and are not necessarily comprehensive. It should not be assumed that the property has all the necessary planning, building regulation or other consents and Wetherell have not tested any services, equipment or facilities. Purchasers must satisfy themselves by inspection or otherwise. 2019

WETHERELL
MAYFAIR'S FINEST PROPERTIES

102 Mount Street · London · W1K 2TH
T: 020 7529 5588 E: rentals@wetherell.co.uk
wetherell.co.uk

NO-ONE KNOWS MAYFAIR BETTER THAN WETHERELL



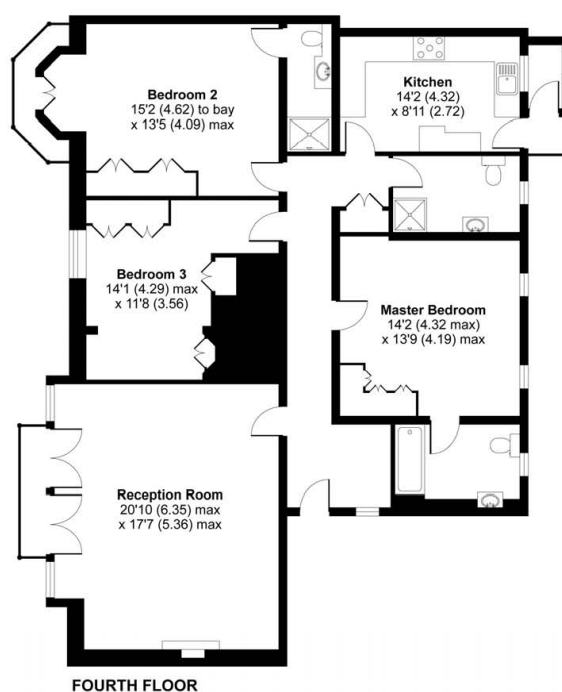


MOUNT STREET MAYFAIR



Mount Street, London, W1K

APPROX. GROSS INTERNAL FLOOR AREA 1526 SQFT / 141.7 SQM



Whilst every attempt has been made to ensure the accuracy of the floor plans contained here, measurements of doors, windows and rooms are approximate and no responsibility is taken for any error, omission or mis-statement. These plans are for representation purposes only as defined by RICS Code of Measuring Practice and should be used as such by any prospective purchaser. The services, systems and appliances listed in this specification have not been tested by Wetherell and no guarantee as to their operating ability or their efficiency can be given.

Copyright nichecom.co.uk 2010 Produced for Wetherell REF : WETH011022

Wetherell have no authority to make or give any representations or warranties in relation to the property. These particulars do not form part of any offer or contract and must not be relied upon as statements or representations of fact. Any areas, measurements or distances are approximate. The text, photographs and plans are for guidance only and are not necessarily comprehensive. It should not be assumed that the property has all the necessary planning, building regulation or other consents and Wetherell have not tested any services, equipment or facilities. Purchasers must satisfy themselves by inspection or otherwise. 2019

WETHERELL

MAYFAIR'S FINEST PROPERTIES

102 Mount Street · London · W1K 2TH
T: 020 7529 5588 E: rentals@wetherell.co.uk
wetherell.co.uk

NO-ONE KNOWS MAYFAIR BETTER THAN WETHERELL

