

Carriage Grove, Litherland
Road, Bootle, Liverpool

£105,000

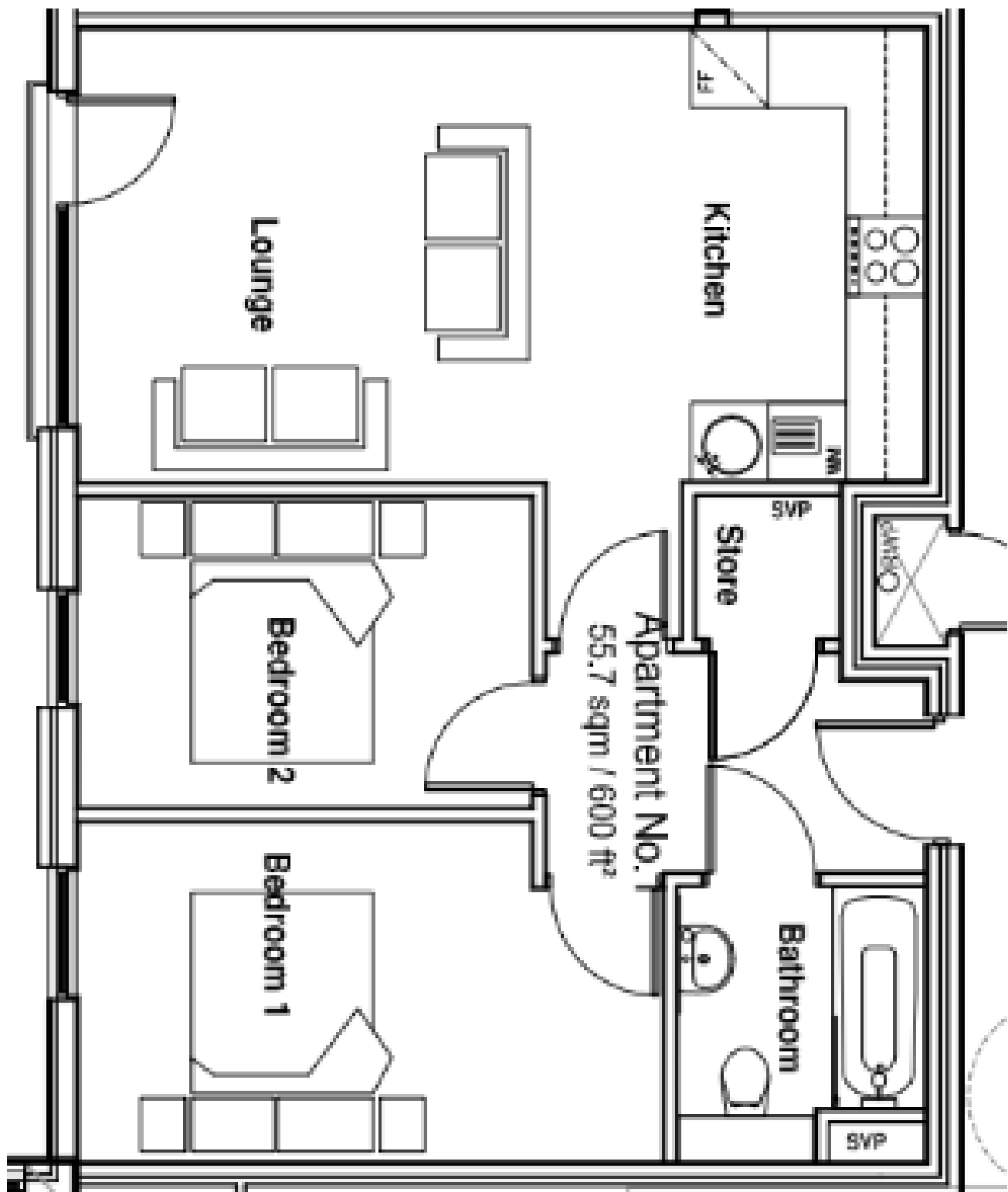


- * Fully Furnished Two Bedroom Third Floor New Build Apartment
- * Allocated Parking Space
- * Double Glazed
- * Electric Heating System
- * Gated Entry
- * Close to Local amenities and transport links



97 | SOUTH ROAD | WATERLOO | L22 0LR
Tel: 0151 920 2404
E-mail: info@logicstates.co.uk





These particulars do not form part of any offer or contract and must not be relied upon as statements or representations of fact. Any areas, measurements or distances are approximate. The text, photographs and plans are for guidance only and are not necessarily comprehensive. It should not be assumed that the property has all the necessary planning, building regulation or other consents and we have not tested services, equipment or facilities. Purchasers must satisfy themselves by inspection or otherwise.



NEW!!! "ANY HOUR" Viewing Booking System - Visit Logicstates.co.uk to book and confirm your viewing online instantly.

Brand new fully furnished, two bedroom apartments located on the third floor of the Wishing Well Development. Each apartment is double glazed and has an electric heating system throughout. The apartments benefit from a gated entry and are close to local amenities and transport links.

Service charge: £50 pcm

Ground rent: £250 per annum

Tenure: 125 years

Total Meters Squared: 55.20

These particulars do not form part of any offer or contract and must not be relied upon as statements or representations of fact. Any areas, measurements or distances are approximate. The text, photographs and plans are for guidance only and are not necessarily comprehensive. It should not be assumed that the property has all the necessary planning, building regulation or other consents and we have not tested services, equipment or facilities. Purchasers must satisfy themselves by inspection or otherwise.