



# DOVER STREET

## MAYFAIR



£1,600 PER WEEK PLUS FEES  
FURNISHED

# WETHERELL

MAYFAIR'S FINEST PROPERTIES

102 Mount Street · London · W1K 2TH  
T: 020 7529 5588 E: [rentals@wetherell.co.uk](mailto:rentals@wetherell.co.uk)  
[wetherell.co.uk](http://wetherell.co.uk)

NO-ONE KNOWS MAYFAIR BETTER THAN WETHERELL





## DOVER STREET MAYFAIR



A top floor two bedroom apartment of 1,062 sq.ft with a lift and porter situated on the fashionable Dover Street.

TOP FLOOR • TWO BEDROOMS • TWO EN SUITES • FAMILY BATHROOM • LIFT • PORTER

NO-ONE KNOWS MAYFAIR BETTER THAN WETHERELL







## DOVER STREET MAYFAIR

A top floor two bedroom apartment of 1,062 sq.ft with a lift and porter situated on the fashionable Dover Street.

This modernised apartment has an abundance of natural light throughout owing to its south west facing aspect. Upon entering the apartment there is a large entrance hall leading through to the open plan reception/dining room and a separate kitchen located across the hallway.

Both the bedrooms have en suite bathrooms whilst the main bedroom boasts a walk in wardrobe, in addition there is a separate guest cloakroom. The finish throughout is to the highest level, with marble bathrooms, underfloor heating and a fully integrated central cloud operating system.

Dover Street has grown in popularity in recent years inviting fashionable boutiques, bars and restaurants which sit comfortably amongst the established galleries and clubs such as the Arts Club and Sexy Fish on Berkeley Square.

Accommodation:

- \* Top Floor
- \* Two Bedrooms
- \* Two En Suites
- \* Family Bathroom
- \* Lift
- \* Porter

\*Wetherell & Co. (Mayfair) Ltd. is a member of the RICS Client money protection Scheme, and also a member of the NAEA, ARLA Propertymark and the property Ombudsman which are Redress schemes.

Any Tenancy that falls outside of the housing act will be subject to Tenant fees. You can find out more details on the Wetherell website or by contacting us directly.

**£1,600 PER WEEK** PLUS FEES  
FURNISHED

Wetherell have no authority to make or give any representations or warranties in relation to the property. These particulars do not form part of any offer or contract and must not be relied upon as statements or representations of fact. Any areas, measurements or distances are approximate. The text, photographs and plans are for guidance only and are not necessarily comprehensive. It should not be assumed that the property has all the necessary planning, building regulation or other consents and Wetherell have not tested any services, equipment or facilities. Purchasers must satisfy themselves by inspection or otherwise. 2020

**WETHERELL**  
MAYFAIR'S FINEST PROPERTIES

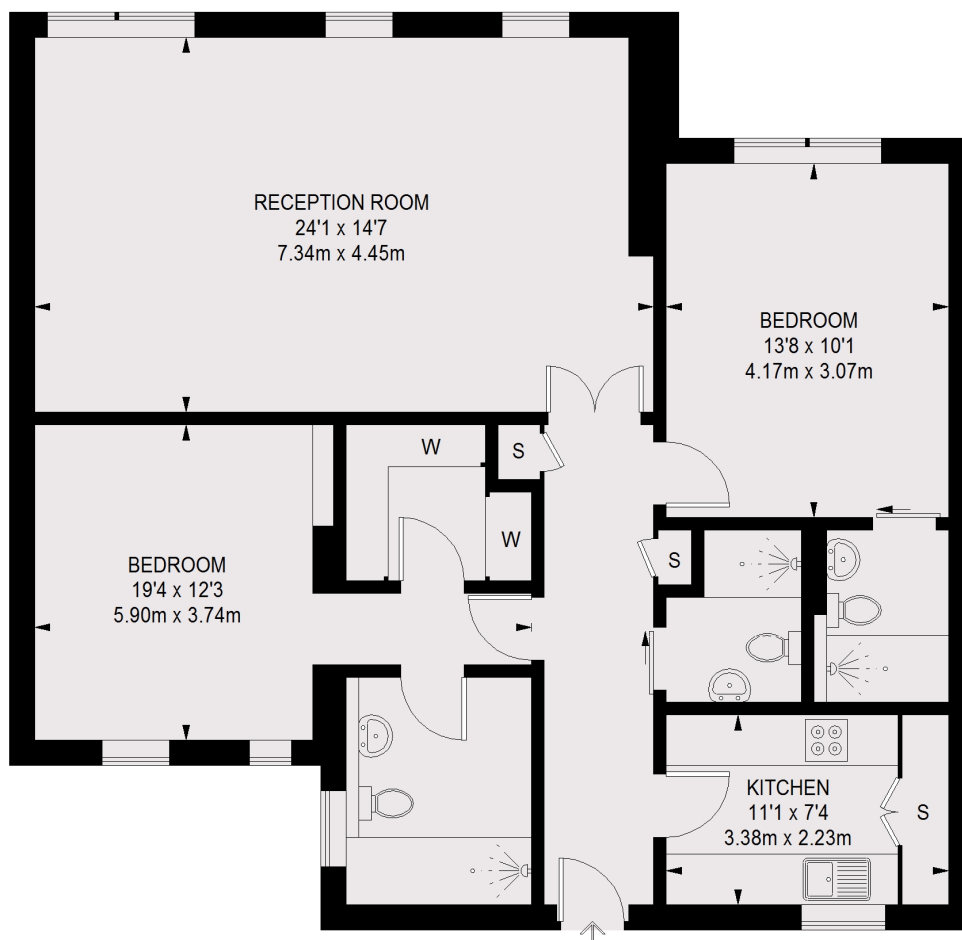
102 Mount Street · London · W1K 2TH  
T: 020 7529 5588 E: [rentals@wetherell.co.uk](mailto:rentals@wetherell.co.uk)  
[wetherell.co.uk](http://wetherell.co.uk)

NO-ONE KNOWS MAYFAIR BETTER THAN WETHERELL





## DOVER STREET MAYFAIR



TOTAL APPROX. FLOOR AREA  
1071 SQ. FT. ( 99.46 SQ. M.)

Wetherell have no authority to make or give any representations or warranties in relation to the property. These particulars do not form part of any offer or contract and must not be relied upon as statements or representations of fact. Any areas, measurements or distances are approximate. The text, photographs and plans are for guidance only and are not necessarily comprehensive. It should not be assumed that the property has all the necessary planning, building regulation or other consents and Wetherell have not tested any services, equipment or facilities. Purchasers must satisfy themselves by inspection or otherwise. 2020

**WETHERELL**  
MAYFAIR'S FINEST PROPERTIES

102 Mount Street · London · W1K 2TH  
T: 020 7529 5588 E: [rentals@wetherell.co.uk](mailto:rentals@wetherell.co.uk)  
[wetherell.co.uk](http://wetherell.co.uk)

NO-ONE KNOWS MAYFAIR BETTER THAN WETHERELL

