



HERTFORD STREET

MAYFAIR



£1,350,000
LEASEHOLD

WETHERELL
MAYFAIR'S FINEST PROPERTIES

102 Mount Street · London · W1K 2TH
T: 020 7529 5566 E: sales@wetherell.co.uk
wetherell.co.uk

NO-ONE KNOWS MAYFAIR BETTER THAN WETHERELL





HERTFORD STREET MAYFAIR



SELL IN Q4 - SOLE AGENT - PRICE REDUCTION - A spacious two bedroom dual aspect apartment set within a popular mansion block, benefiting from a long lease, lift and 24 hour portorage.

FLAT • 2 BEDROOMS • 1 RECEPTION ROOM

NO-ONE KNOWS MAYFAIR BETTER THAN WETHERELL





HERTFORD STREET MAYFAIR

A spacious two bedroom dual aspect apartment set within a popular mansion block, benefiting from a long lease, lift and 24 hour portage.

This apartment benefits from all the principal rooms having west facing views and is located on the second floor. The double reception leads off the separate kitchen and benefits from floor to ceiling windows. There are two spacious double bedrooms with the main benefiting from an en-suite bathroom. In addition, the second bedroom utilises the conveniently located shower room across the hallway, which also acts as the guest cloakroom.

The apartment enjoys the added benefits of a long lease, two passenger lifts and 24 hour portage, therefore making it a perfect investment or Pied-à-Terre.

Carrington House sits on the corner of Hertford Street and Shepherd Street and is well placed for many restaurants, bars and private members clubs, including the prestigious 5 Hertford Street. Hertford Street is accessible from both Curzon Street and Park Lane with quick access to the open spaces of Hyde Park.

Accommodation:

- * Entrance Hall- Reception Room
- * Kitchen
- * Main Bedroom with En – Suite Bathroom
- * Second Double Bedroom
- * Family Bathroom
- * 837 Square Feet
- * EPC Band D
- * Lift

Terms:

Lease Length – 962 years remaining
Service Charge – TBC
Ground Rent – TBC
Price - £1,550,000

£1,350,000
LEASEHOLD

Wetherell have no authority to make or give any representations or warranties in relation to the property. These particulars do not form part of any offer or contract and must not be relied upon as statements or representations of fact. Any areas, measurements or distances are approximate. The text, photographs and plans are for guidance only and are not necessarily comprehensive. It should not be assumed that the property has all the necessary planning, building regulation or other consents and Wetherell have not tested any services, equipment or facilities. Purchasers must satisfy themselves by inspection or otherwise. 2021



WETHERELL
MAYFAIR'S FINEST PROPERTIES

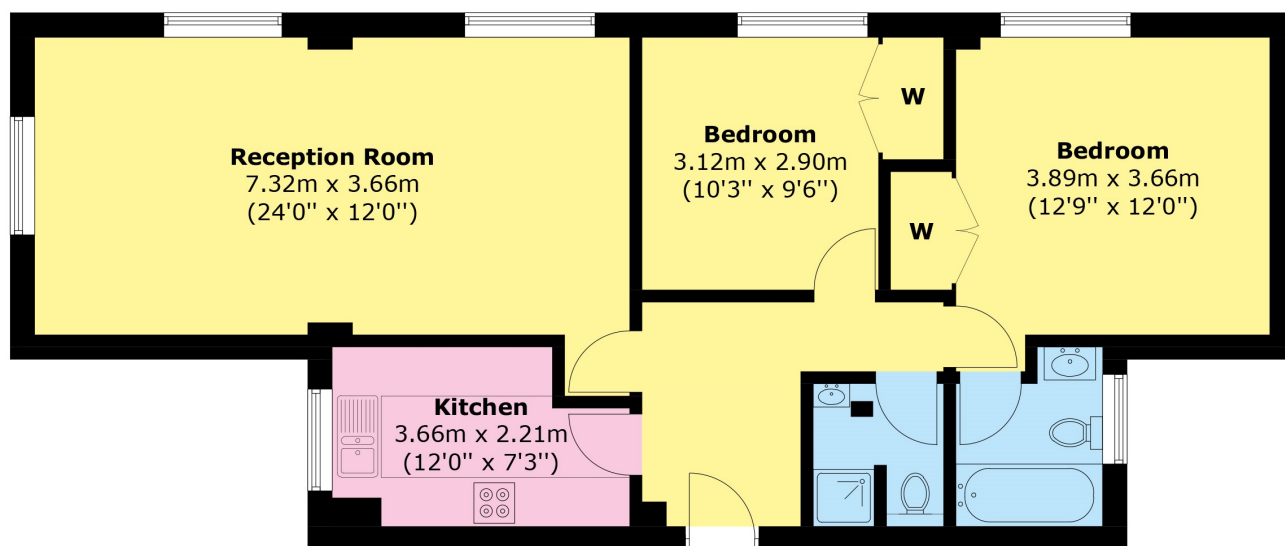
102 Mount Street · London · W1K 2TH
T: 020 7529 5566 E: sales@wetherell.co.uk
wetherell.co.uk

NO-ONE KNOWS MAYFAIR BETTER THAN WETHERELL





HERTFORD STREET MAYFAIR



Second Floor

Wetherell have no authority to make or give any representations or warranties in relation to the property. These particulars do not form part of any offer or contract and must not be relied upon as statements or representations of fact. Any areas, measurements or distances are approximate. The text, photographs and plans are for guidance only and are not necessarily comprehensive. It should not be assumed that the property has all the necessary planning, building regulation or other consents and Wetherell have not tested any services, equipment or facilities. Purchasers must satisfy themselves by inspection or otherwise. 2021

WETHERELL

MAYFAIR'S FINEST PROPERTIES

102 Mount Street · London · W1K 2TH
T: 020 7529 5566 E: sales@wetherell.co.uk
wetherell.co.uk

NO-ONE KNOWS MAYFAIR BETTER THAN WETHERELL

