



PARK PLACE



£4,400 PER WEEK
FURNISHED

WETHERELL
MAYFAIR'S FINEST PROPERTIES

102 Mount Street · London · W1K 2TH
T: 020 7529 5588 E: rentals@wetherell.co.uk
wetherell.co.uk

NO-ONE KNOWS MAYFAIR BETTER THAN WETHERELL





PARK PLACE



An exclusive penthouse luxuriously appointed over three floors with abundant outdoor space.

LARGE TERRACE WITH 360 DEGREE VIEWS • LARGE MAIN SUITE • FOUR DOUBLE GUEST SUITES • LIBRARY • GAMES ROOM • DIRECT LIFT ACCESS • PORTER • 3,405 SQ.FT.

NO-ONE KNOWS MAYFAIR BETTER THAN WETHERELL





PARK PLACE

An exclusive penthouse luxuriously appointed over three floors with abundant outdoor space.

Finished with discerning attention to detail this striking four bedroom residence faces South onto Tranquil Park Place and North onto Arlington Street.

The principle reception space on the fourth floor is a large double aspect drawing room with feature bay windows at both sides. Adjacent to the drawing room the south facing dining room comfortably accommodate 10 guests. A State of the art kitchen is fitted with Gaggenau appliances and benefits from a dining island with marble counter tops.

This level also has a peaceful library and a games/TV room making this property the epitome of luxury central London living.

On the Fifth Floor the spacious main bedroom opens onto a private Terrace and is the perfect place to relax and unwind. The bespoke master bathroom finished with the finest materials to create an indulgent spa-like experience and further benefits from adjacent to lavishly detailed dressing room.

Also on the fifth floor are Three further guest suites which each have their own en suite bathrooms.

Sixth floor, you will find the perfect place to unwind and entertain. The private roof terrace provides a refined and impressive space affording 360 degree views of historic London Landmarks. It is accessed from the sixth floor lounge with windows on all sides is a bright and relaxing space.

Just a stone's throw from the world-renowned restaurant La Caprice and the Ritz Hotel, Park Place Residences is an impeccably restored Art Deco-inspired building with a lift and day porter service. It is discreetly located in the heart of St James's, surrounded by royal parkland and prestigious London Landmarks.

Accommodation:

- * Large Terrace with 360 degree views
- * Large Main Suite
- * Three Double Bedrooms with en-suites
- * Powder Room
- * Library
- * Games room
- * Direct lift access

£4,400 PER WEEK
FURNISHED

Wetherell have no authority to make or give any representations or warranties in relation to the property. These particulars do not form part of any offer or contract and must not be relied upon as statements or representations of fact. Any areas, measurements or distances are approximate. The text, photographs and plans are for guidance only and are not necessarily comprehensive. It should not be assumed that the property has all the necessary planning, building regulation or other consents and Wetherell have not tested any services, equipment or facilities. Purchasers must satisfy themselves by inspection or otherwise. 2020

WETHERELL
MAYFAIR'S FINEST PROPERTIES

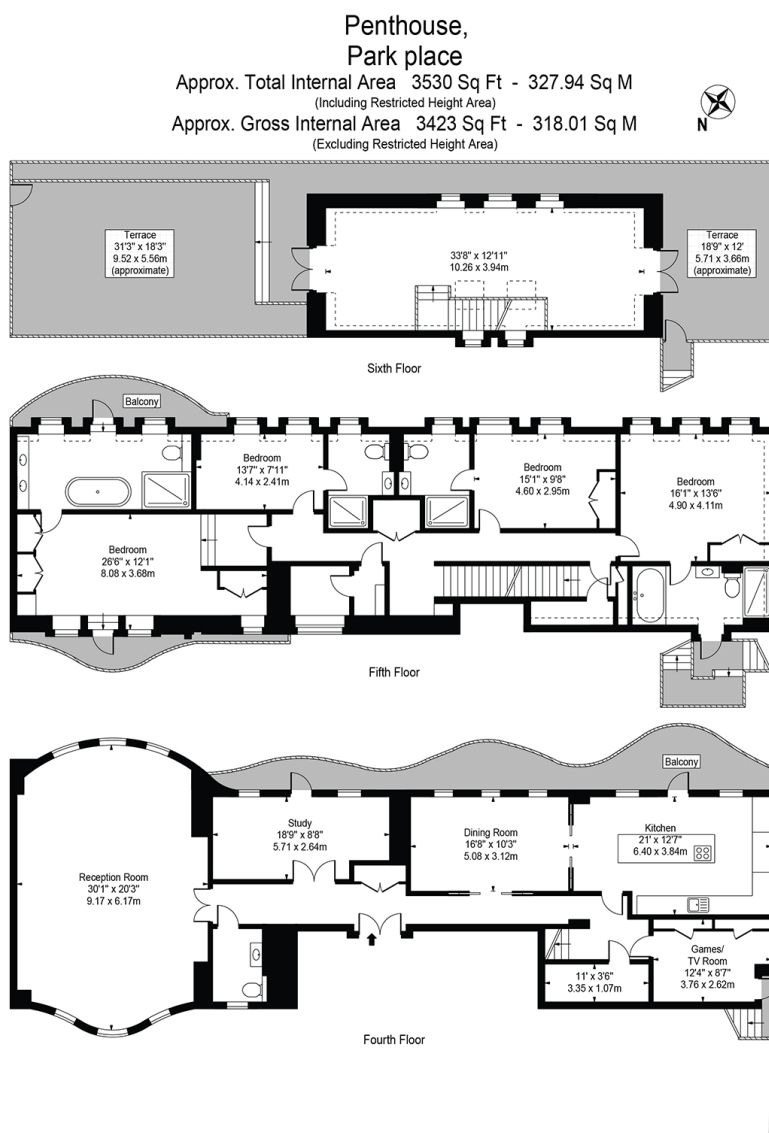
102 Mount Street · London · W1K 2TH
T: 020 7529 5588 E: rentals@wetherell.co.uk
wetherell.co.uk

NO-ONE KNOWS MAYFAIR BETTER THAN WETHERELL





PARK PLACE



For Illustration Purposes Only - Not To Scale

This floor plan should be used as a general outline for guidance only and does not constitute in whole or in part an offer or contract.
Any intending purchaser or lessee should satisfy themselves by inspection, searches, enquiries and full survey as to the correctness of each statement.
Any areas, measurements or distances quoted are approximate and should not be used to value a property or be the basis of any sale or let.

Wetherell have no authority to make or give any representations or warranties in relation to the property. These particulars do not form part of any offer or contract and must not be relied upon as statements or representations of fact. Any areas, measurements or distances are approximate. The text, photographs and plans are for guidance only and are not necessarily comprehensive. It should not be assumed that the property has all the necessary planning, building regulation or other consents and Wetherell have not tested any services, equipment or facilities. Purchasers must satisfy themselves by inspection or otherwise. 2020

WETHERELL

MAYFAIR'S FINEST PROPERTIES

102 Mount Street · London · W1K 2TH
T: 020 7529 5588 E: rentals@wetherell.co.uk
wetherell.co.uk

NO-ONE KNOWS MAYFAIR BETTER THAN WETHERELL

