



NORTH ROW

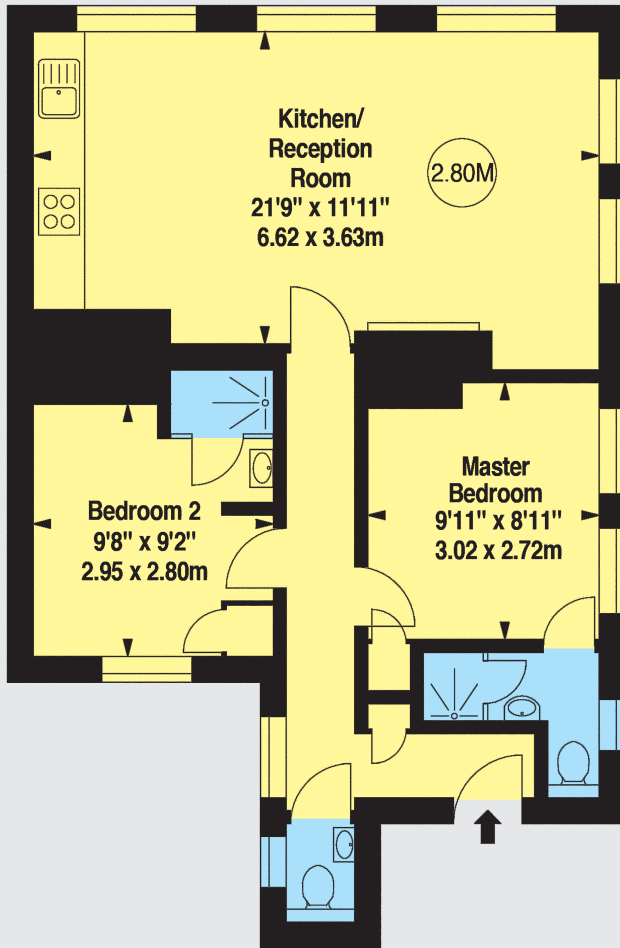
MAYFAIR W1



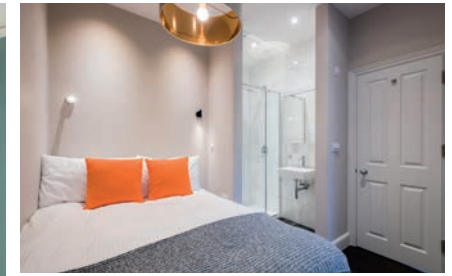
AN IMMACULATE DUAL ASPECT TWO BEDROOM APARTMENT OF 596 SQUARE FEET, LOCATED BY PARK LANE AND WITH A LONG LEASE



Approximate Gross Internal Area
596 Square Feet (55.37 Square Metres)



FIRST FLOOR



An immaculate dual aspect two Bedroom apartment of 596 square feet located by Park Lane and with a long lease.

Found in very good condition, this extremely bright first floor flat offers two large En-Suite Bedrooms and an open plan Reception/Kitchen, stretching five windows across with views towards Hyde Park and North Row. It is ideally located for commuters in the heart of London, making an ideal pied-à-terre.

North Row runs East off Park Lane through to North Audley Street and is surrounded by leading hotels, including Claridges and The Dorchester, the internationally acclaimed shopping districts of Bond Street and Mount Street, and renowned establishments such as Bosidale restaurant.

Mayfair is widely regarded as one of London's most prestigious residential addresses, and has long been recognised as a highly desirable and sought after location in which to reside.

- Entrance Hall
- Kitchen/Reception Room
- Master Bedroom with En-Suite
- Second Bedroom with En-Suite
- Guest Cloakroom
- 596 Square Feet
- EPC Band: C

Leasehold: 125 Years From February 2018

Ground Rent: Peppercom

Price: £1,275,000

Wetherell have no authority to make or give any representations or warranties in relation to the property. These particulars do not form part of any offer or contract and must not be relied upon as statements or representations of fact. Any areas, measurements or distances are approximate. The text, photographs and plans are for guidance only and are not necessarily comprehensive. It should not be assumed that the property has all the necessary planning, building regulation or other consents and Wetherell have not tested any services, equipment or facilities. Purchasers must satisfy themselves by inspection or otherwise. Energy Efficiency Rating: Band C. 2018

Sole Agents



WETHERELL
MAYFAIR'S FINEST PROPERTIES

102 Mount Street · London · W1K 2TH
T: 020 7529 5566 E: sales@wetherell.co.uk
wetherell.co.uk

NO-ONE KNOWS MAYFAIR BETTER THAN WETHERELL