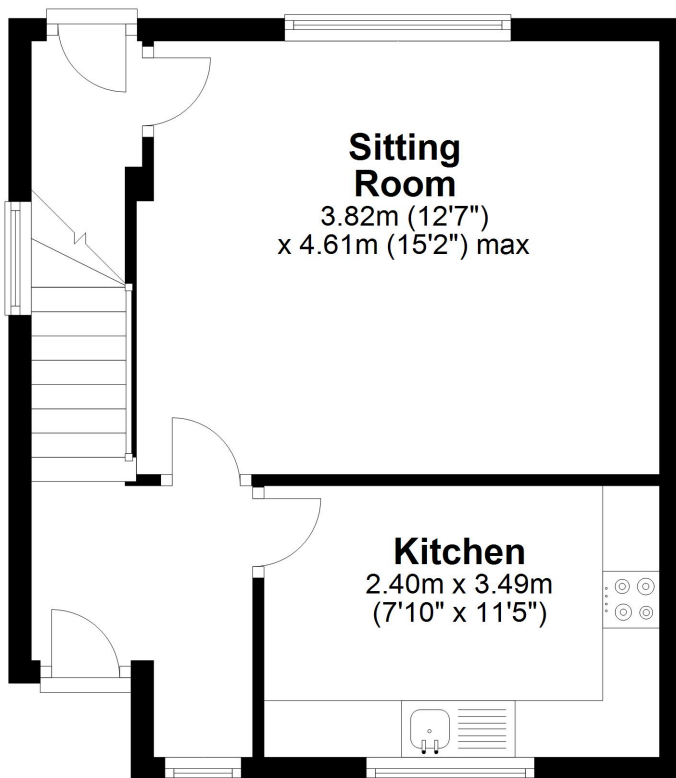


Selling the FACTS not the FLOWER

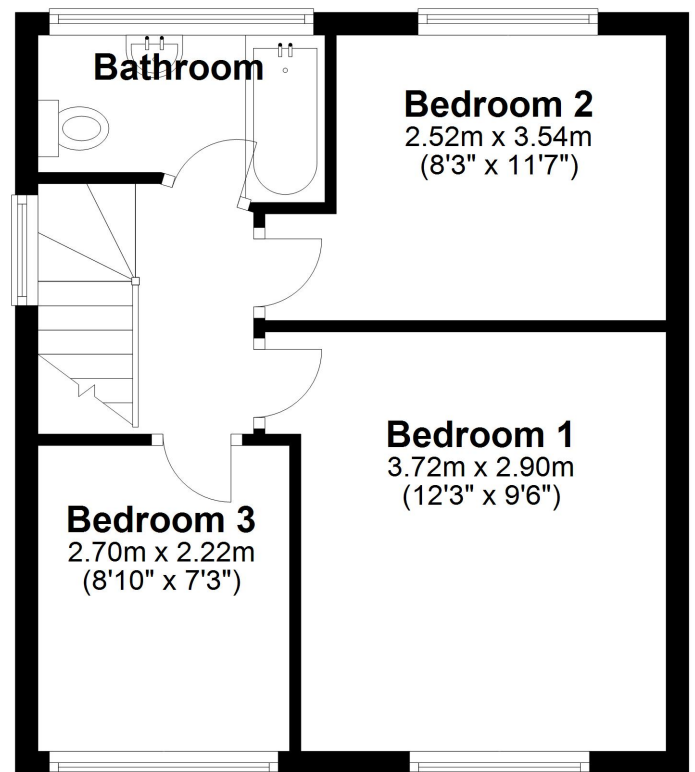
- Three Bedroom End Town House
- Lounge
- Fitted Kitchen With Integrated Hob & Oven
- Family Bathroom
- Rear South Facing Garden



Ground Floor





First Floor



These particulars do not form part of any offer or contract and must not be relied upon as statements or representations of fact. Any areas, measurements or distances are approximate. The text, photographs and plans are for guidance only and are not necessarily comprehensive. It should not be assumed that the property has all the necessary planning, building regulation or other consents and we have not tested services, equipment or facilities. Purchasers must satisfy themselves by inspection or otherwise.



Energy Efficiency Rating		
	Current	Potential
Very energy efficient - lower running costs		
(92-100) A		
(81-91) B		
(69-80) C		
(55-68) D	70	86
(39-54) E		
(21-38) F		
(1-20) G		
Not energy efficient - higher running costs		
England, Scotland & Wales EU Directive 2002/91/EC 		

Environmental Impact (CO ₂) Rating		
	Current	Potential
Very environmentally friendly - lower CO ₂ emissions		
(92-100) A		
(81-91) B		
(69-80) C		
(55-68) D	70	71
(39-54) E		
(21-38) F		
(1-20) G		
Not environmentally friendly - higher CO ₂ emissions		
England, Scotland & Wales EU Directive 2002/91/EC 		

Selling the FACTS not the FLOWER

For all room sizes/dimensions please see the floor Plans

Title number- MS301443

Tenure- Freehold

Local Authority- Sefton Council

Council tax- Band A

Annual price-£1,361.66

Conservation Area- No

Flood Risk- Very low

Floor Area- 742.71 ft 2 / 69 m 2

Plot Size-0.04 Acres

Mobile Coverage

Vodafone- Good

Three- Good

O2- Good

Broadband

Basic- 9 Mbps

Superfast- 44 Mbps

Ultrafast- 1000 Mbps

Satellite / Fibre TV Availability

BT - Great

Sky - Great

Virgin - Great

97 | SOUTH ROAD | WATERLOO | L22 0LR

Tel: 0151 920 2404

E-mail: info@logicstates.co.uk





(Data source from sprift)

'Unusually good at what we do'

Buy, sell or let with the agent of the decade- Zoopla customer excellence award 2020

These particulars do not form part of any offer or contract and must not be relied upon as statements or representations of fact. Any areas, measurements or distances are approximate. The text, photographs and plans are for guidance only and are not necessarily comprehensive. It should not be assumed that the property has all the necessary planning, building regulation or other consents and we have not tested services, equipment or facilities. Purchasers must satisfy themselves by inspection or otherwise.